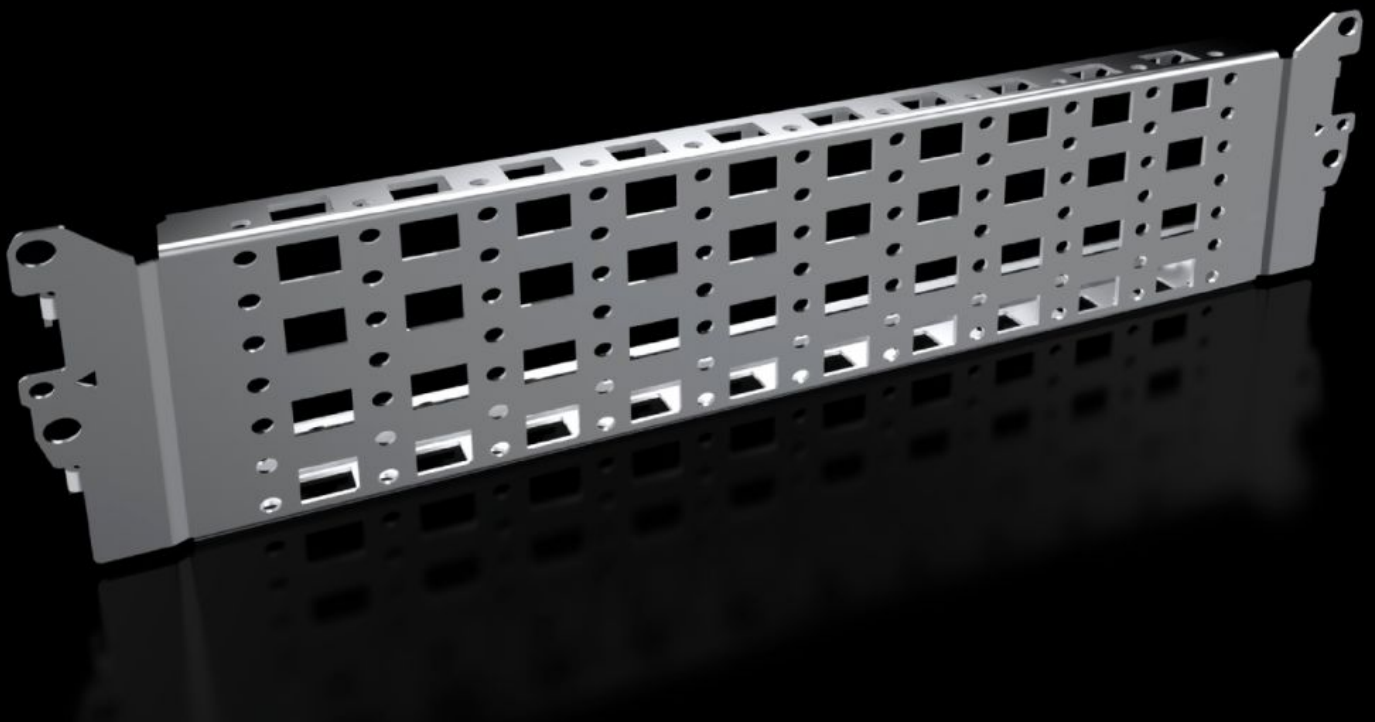


Rittal – The System.

Faster – better – everywhere.



VX 8100.730

**Punched section with mounting
flange, 23 x 89 mm, stainless steel**

State: 2/04/2026 (Source: rittal.com/uk-en)



ENCLOSURES

POWER DISTRIBUTION

CLIMATE CONTROL

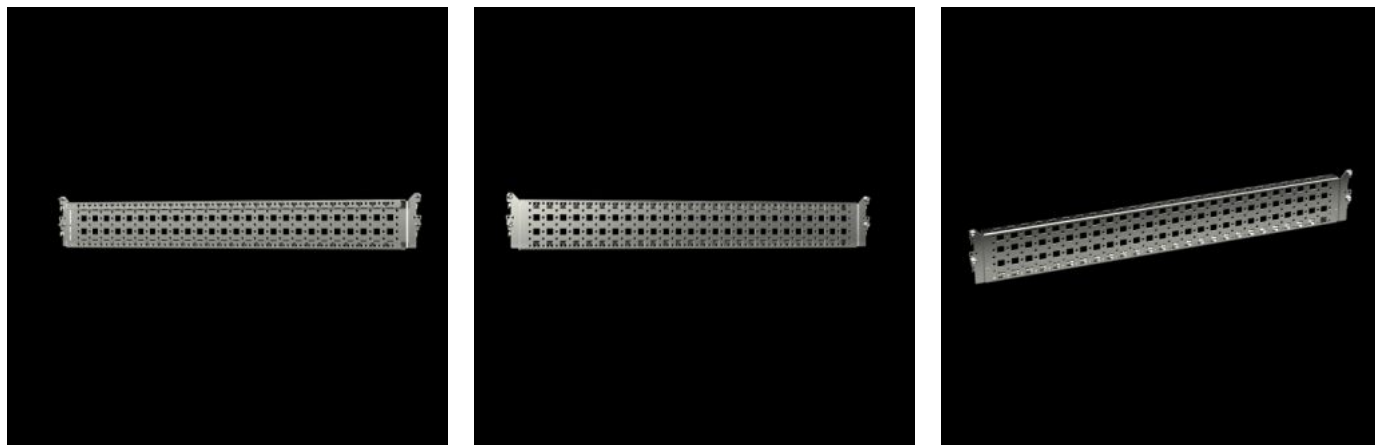
IT INFRASTRUCTURE

SOFTWARE & SERVICES

FRIEDHELM LOH GROUP

VX 8100.730 - Punched section with mounting flange, 23 x 89 mm, stainless steel for VX, VX SE

For variable, individual interior installation of the enclosure frame on the inner mounting level.



Features

Model No.	VX 8100.730
Product description	For variable, individual interior installation of the enclosure frame on the inner mounting level.
Benefits	Simply locate into the system punchings and screw-fasten System punchings on all four sides With slots at the top and bottom for cage nuts, for attaching your own components via metric screws
Material	Stainless steel 1.4301 (AISI 304)
Supply includes	Assembly parts
Installation options	In VX on the inner mounting level, on the VX enclosure section In VX SE, on the enclosure section in conjunction with VX adaptor rail On identical punched sections with mounting flanges
To fit	Enclosure type: VX VX SE Width/depth: 400 mm
Packs of	2 pc(s).
Net weight	0.85 kg

Features

Gross weight	1 kg
Customs tariff number	73269098
ETIM 9	EC002620
ECLASS 8.0	27189234
Product description	VX Punched section, with mounting flange 23 x 89 mm, for W/D: 400 mm, stainless steel

Approvals

Explanations	PCF-declaration
--------------	-----------------