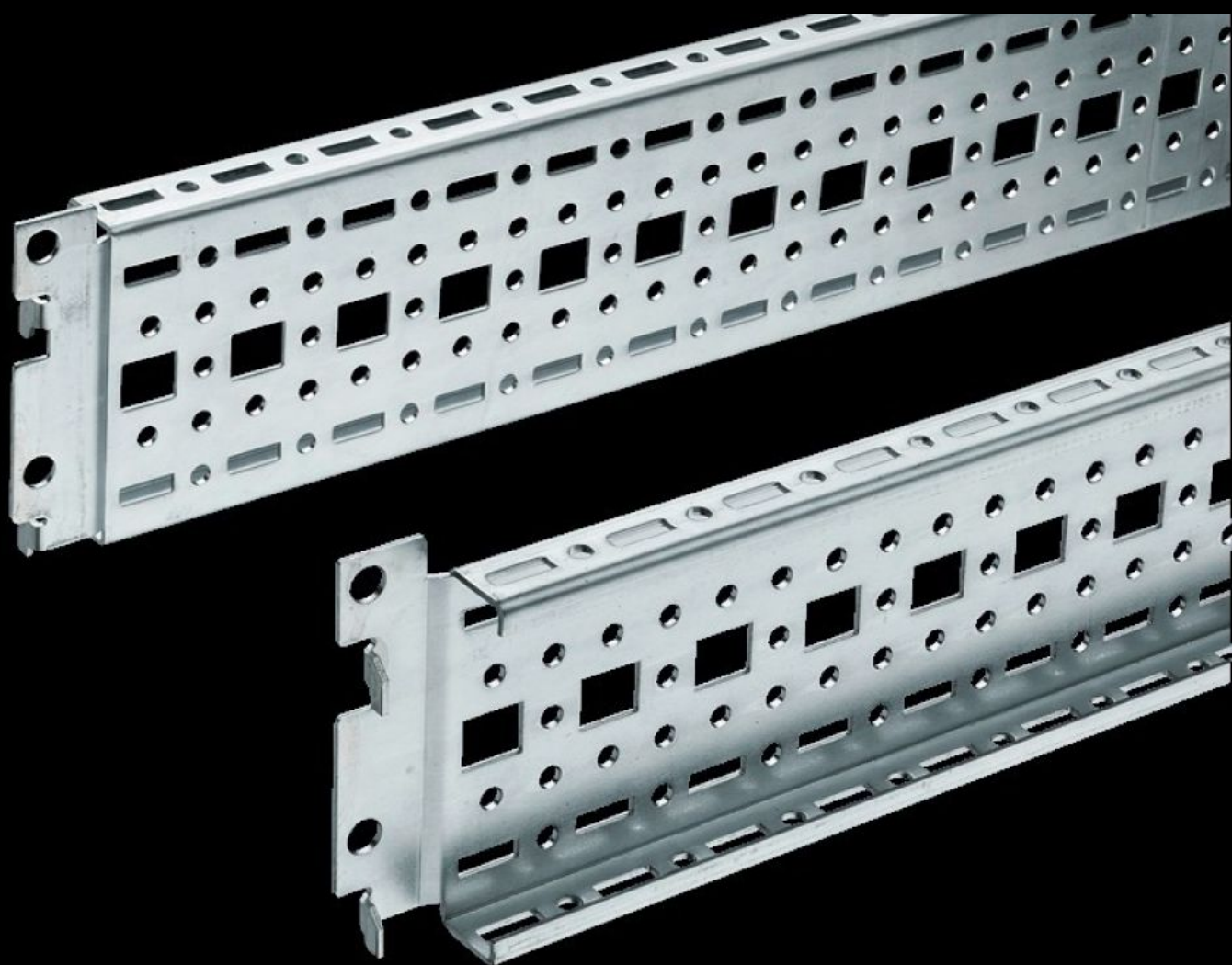


Rittal – The System.

Faster – better – everywhere.



TS 8612.150

TS punched section with mounting flange, 17 x 73 mm

State: 13/07/2025 (Source: rittal.com/uk-en)

ENCLOSURES

POWER DISTRIBUTION

CLIMATE CONTROL

IT INFRASTRUCTURE

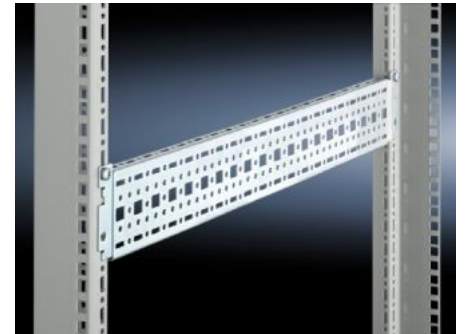
SOFTWARE & SERVICES

FRIEDHELM LOH GROUP



TS 8612.150 - TS punched section with mounting flange, 17 x 73 mm

For universal skeleton structures or partial assembly. Simply locate into the punchings and secure.



Features

Model No.	TS 8612.150
Design	For the outer mounting level
Product description	For universal skeleton structures or partial assembly. Simply locate into the punchings and secure.
Material	Sheet steel
Surface finish	Zinc-plated
Supply includes	Assembly screws
Length	440 mm
Installation options	<p>On the vertical TS, VX SE enclosure section: On the inner mounting level, height-offset all-round</p> <p>On the horizontal VX SE enclosure section, top in the depth</p> <p>In TP via rail for interior installation: In the width, for inner mounting level</p> <p>As a mounting kit for component shelves in TS, VX SE, simply locate and secure</p>
Assembly instruction	The rail for internal mounting is required when installing in TP

Features

To fit	Enclosure type: VX SE TP PC IW To fit width/depth: 500 mm
Packs of	4 pc(s).
Net weight	1.92
Gross weight	1.96
PCF per pack (cradle-to-gate)	7.6 kg CO2 eq (Cat B)
Note on PCF category	Category B: PCF value (cradle-to-gate) based on the product weight, approximately calculated and self-declared
Customs tariff number	73269098
EAN	4028177212145
ETIM 9	EC002625
ECLASS 8.0	27189234