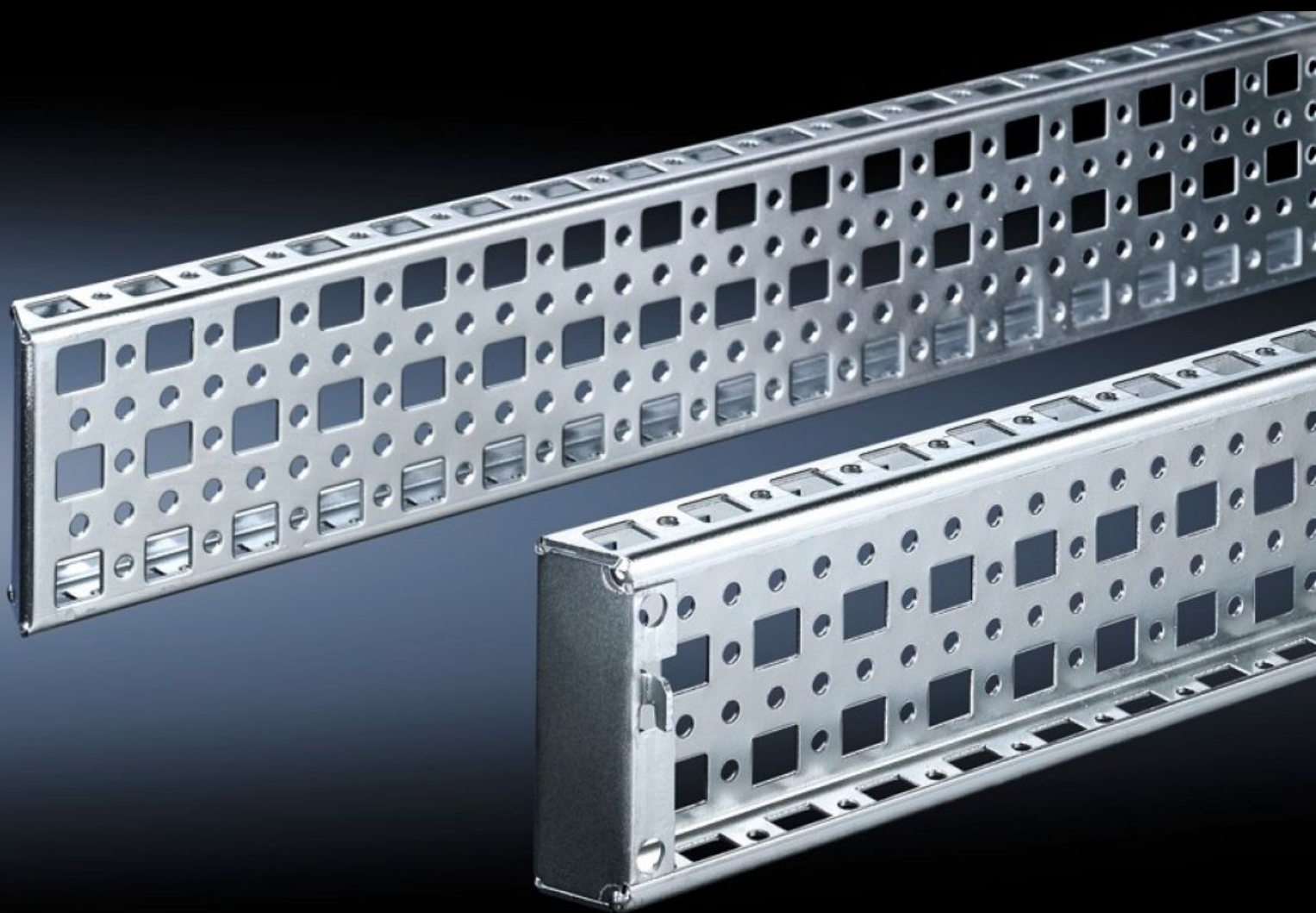
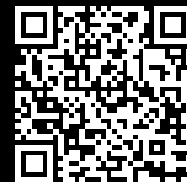


Rittal – The System.

Faster – better – everywhere.



TS 8612.500

TS punched section with mounting flange, 23 x 73 mm

State: 2/08/2025 (Source: rittal.com/uk-en)

ENCLOSURES

POWER DISTRIBUTION

CLIMATE CONTROL

IT INFRASTRUCTURE

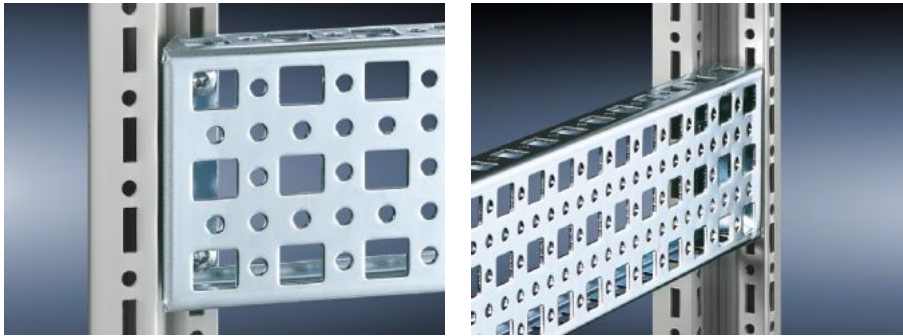
SOFTWARE & SERVICES

FRIEDHELM LOH GROUP



TS 8612.500 - TS punched section with mounting flange, 23 x 73 mm

The alternative to the TS punched section with mounting flange 17 x 73 mm, with punchings for captive nuts/threaded blocks instead of the slotted holes top and bottom. Simply locate and secure.



Features

Model No.	TS 8612.500
Product description	The alternative to the TS punched section with mounting flange 17 x 73 mm, with punchings for captive nuts/threaded blocks instead of the slotted holes top and bottom. Simply locate and secure.
Material	Sheet steel
Surface finish	Zinc-plated
Supply includes	Assembly screws
Installation options	On the vertical TS, VX SE enclosure section
To fit	Enclosure type: the inner mounting level To fit width/depth: 1,000 mm
Packs of	4 pc(s).
Net weight	4.264
Gross weight	4.463
Customs tariff number	73269098
EAN	4028177331051
ETIM 9	EC002625

Features

ECLASS 8.0

27189234