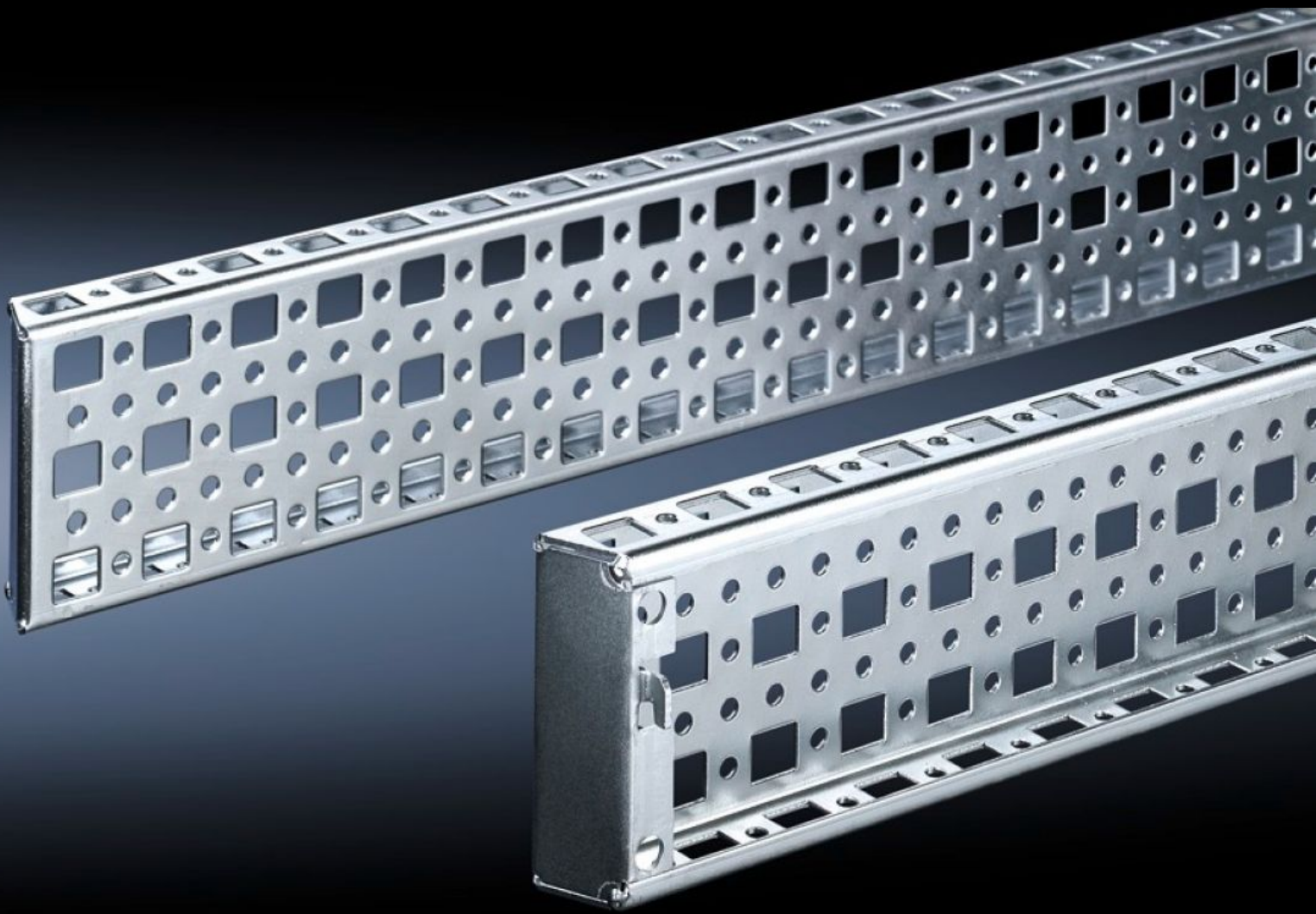


Rittal – The System.

Faster – better – everywhere.



TS 8612.560

**TS punched section with mounting
flange, 23 x 73 mm**

State: 23/05/2026 (Source: rittal.com/uk-en)

ENCLOSURES

POWER DISTRIBUTION

CLIMATE CONTROL

IT INFRASTRUCTURE

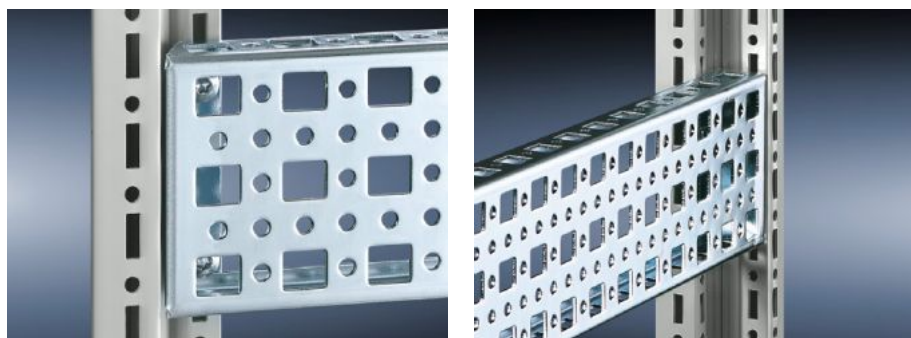
SOFTWARE & SERVICES

FRIEDHELM LOH GROUP



TS 8612.560 - TS punched section with mounting flange, 23 x 73 mm

The alternative to the TS punched section with mounting flange 17 x 73 mm, with punchings for captive nuts/threaded blocks instead of the slotted holes top and bottom. Simply locate and secure.



Features

Model No.	TS 8612.560
Product description	The alternative to the TS punched section with mounting flange 17 x 73 mm, with punchings for captive nuts/threaded blocks instead of the slotted holes top and bottom. Simply locate and secure.
Material	Sheet steel
Surface finish	Zinc-plated
Supply includes	Assembly screws
Installation options	On the vertical TS, VX SE enclosure section
To fit	Enclosure type: the inner mounting level Width/depth: 600 mm
Packs of	4 pc(s).
Net weight	2.544 kg
Gross weight	2.74 kg
Customs tariff number	73269098
ETIM 9	EC002625
ECLASS 8.0	27189234

Features

Product description

TS TS punched section with mounting flange, 23 x 73 mm, for inner mounting level: W/D: 600 mm