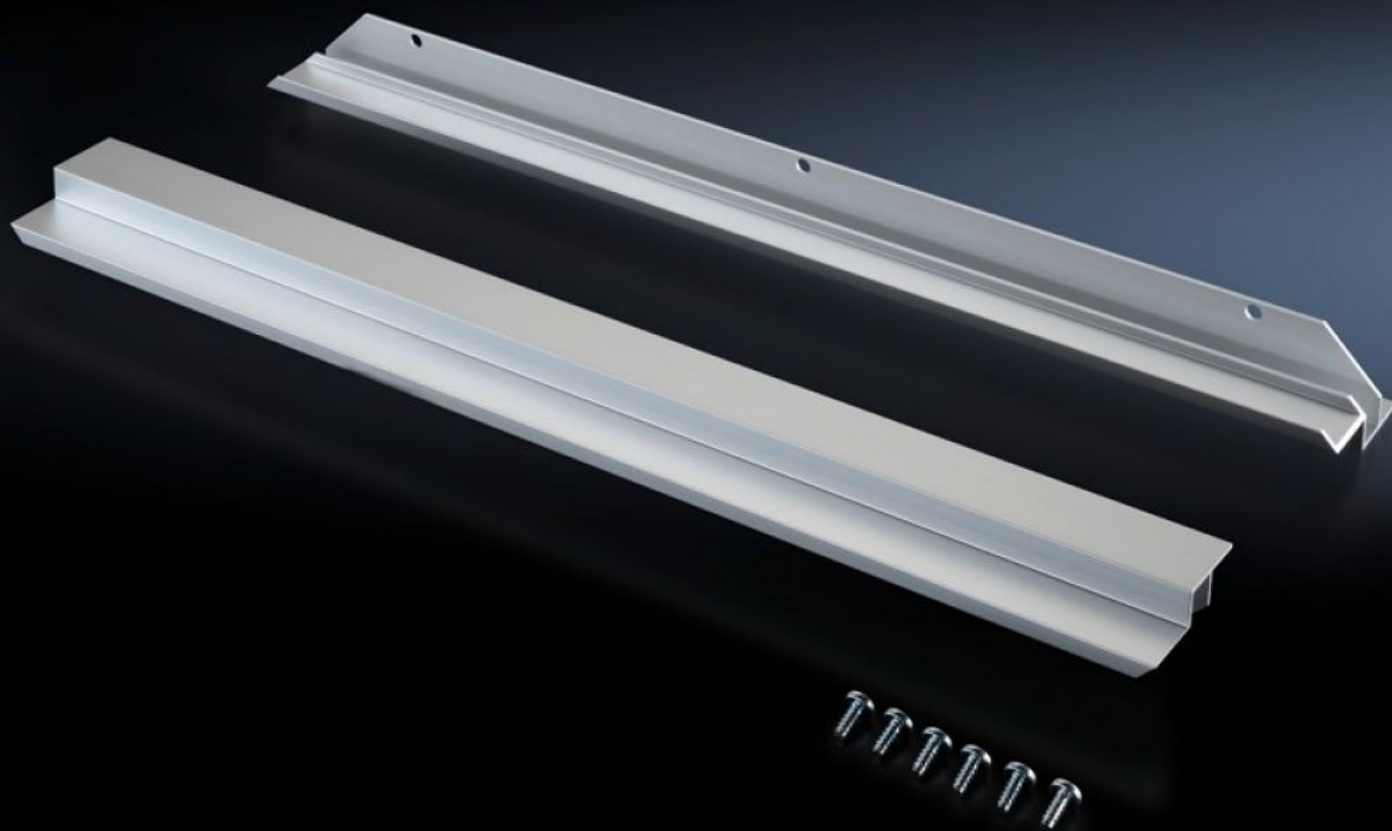


Rittal – The System.

Faster – better – everywhere.



TS 8613.040

Infill panels, 482.6 mm (19"), horizontal

State: 16/02/2026 (Source: rittal.com/uk-en)

ENCLOSURES

POWER DISTRIBUTION

CLIMATE CONTROL

IT INFRASTRUCTURE

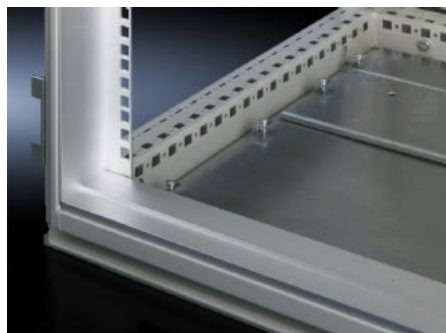
SOFTWARE & SERVICES

FRIEDHELM LOH GROUP



TS 8613.040 - Infill panels, 482.6 mm (19"), horizontal for adaptor sections

To infill between installed 482.6 mm (19") equipment positioned in the full enclosure height and the enclosure clearance height.



Features

Model No.	TS 8613.040
Product description	To infill between installed 482.6 mm (19") equipment positioned in the full enclosure height and the enclosure clearance height.
Material	Extruded aluminium section
Supply includes	Assembly parts
To fit	Enclosure type: TS Height: = 1,600 mm = 2,000 mm
Packs of	2 pc(s).
Net weight	0.6
Gross weight	0.719
Customs tariff number	83024200
EAN	4028177213159
ETIM 9	EC002625
ECLASS 8.0	27189234