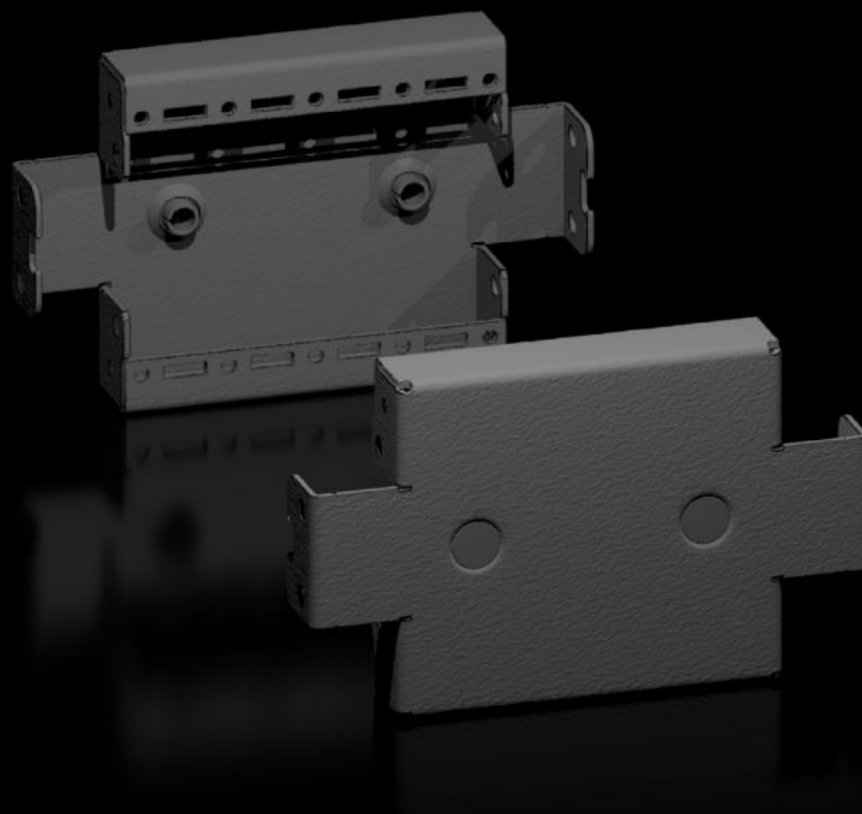


Rittal – The System.

Faster – better – everywhere.



VX 8640.030

Base/plinth trim panels, side, 100 mm

State: 26/08/2025 (Source: rittal.com/uk-en)

ENCLOSURES

POWER DISTRIBUTION

CLIMATE CONTROL

IT INFRASTRUCTURE

SOFTWARE & SERVICES

FRIEDHELM LOH GROUP



VX 8640.030 - Base/plinth trim panels, side, 100 mm for base/plinth system VX, sheet steel

To finish off a base/plinth unit at the sides and for additional stability, or for the interior installation of bayed base/plinths. One 200 mm high or two 100 mm high trim panels may optionally be fitted on 200 mm high base/plinths.

Features

Model No.	VX 8640.030
Product description	To finish off a base/plinth unit at the sides and for additional stability, or for the interior installation of bayed base/plinths. One 200 mm high or two 100 mm high trim panels may optionally be fitted on 200 mm high base/plinths.
Material	Sheet steel
Colour	RAL 9005
Supply includes	Assembly parts
Dimensions	Height: 100 mm
To fit	Depth: = 300 mm
Type rating to UL 50E	Type 1, 12
Weight/pack	0.614 kg
Packs of	2 pc(s).
Net weight	0.6
Gross weight	0.614
Customs tariff number	94039910
EAN	4028177958920
E-Number Sweden	E3465376
ETIM 9	EC000721
ECLASS 8.0	27182003

Approvals

Approvals

UL + C-UL - FTTA