

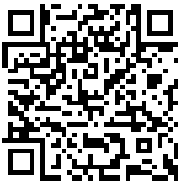
Rittal – The System.

Faster – better – everywhere.



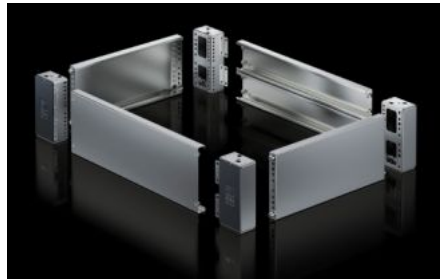
VX 8660.052

**Base/plinth corner pieces with
base/plinth trim panels, front and
rear for VX base/plinth system,
stainless steel**



VX 8660.052 - Base/plinth corner pieces with base/plinth trim panels, front and rear for VX base/plinth system, stainless steel New version

Base/plinth corner pieces with front and rear trim panel. Large openings in the base/plinth corner piece for optimum access to the screw connection. Seamlessly bayable.



Features

| | |
|-----------------|--|
| Model No. | VX 8660.052 |
| Material | Base/plinth corner piece: Stainless steel 1.4301 (AISI 304) Base/plinth trim panel front/rear: Stainless steel 1.4301 (AISI 304) Cover caps: ABS |
| Surface finish | Brushed, grain 400 |
| Supply includes | Assembly parts 4 base/plinth corner pieces 4 cover caps 2 base/plinth trim panels, front/rear, 100 mm high |
| Note | Side base/plinth trim panels are required to finish off a base/plinth unit and also for additional stability between the base/plinths. If necessary, the cover caps included with the supply may be exchanged for stainless steel cover caps for VX base/plinth system, stainless steel. Components from the 1st generation base/plinth system cannot be combined with components from the 2nd generation base/plinth system |
| Dimensions | Height: 100 mm |

Features

| | |
|-----------------------|--|
| To fit | Enclosure type: VX VX SE TS PC Width: = 1,000 mm |
| Type rating to UL 50E | Type 1 Type 3R Type 4 Type 4X Type 12 |
| Packs of | 2 pc(s). |
| Net weight | 5.4 |
| Gross weight | 5.652 |
| Customs tariff number | 94039910 |
| EAN | 4028177037878 |
| ETIM 9 | EC000721 |
| ETIM 8 | EC000721 |
| ECLASS 8.0 | 27182003 |

Approvals

| | |
|-----------|------------------|
| Approvals | UL + C-UL - FTTA |
|-----------|------------------|