

Rittal – The System.

Faster – better – everywhere.



VX 8660.110

Transport castors

State: 5/07/2025 (Source: [rittal.com/uk-en](https://www.rittal.com/uk-en))

ENCLOSURES

POWER DISTRIBUTION

CLIMATE CONTROL

IT INFRASTRUCTURE

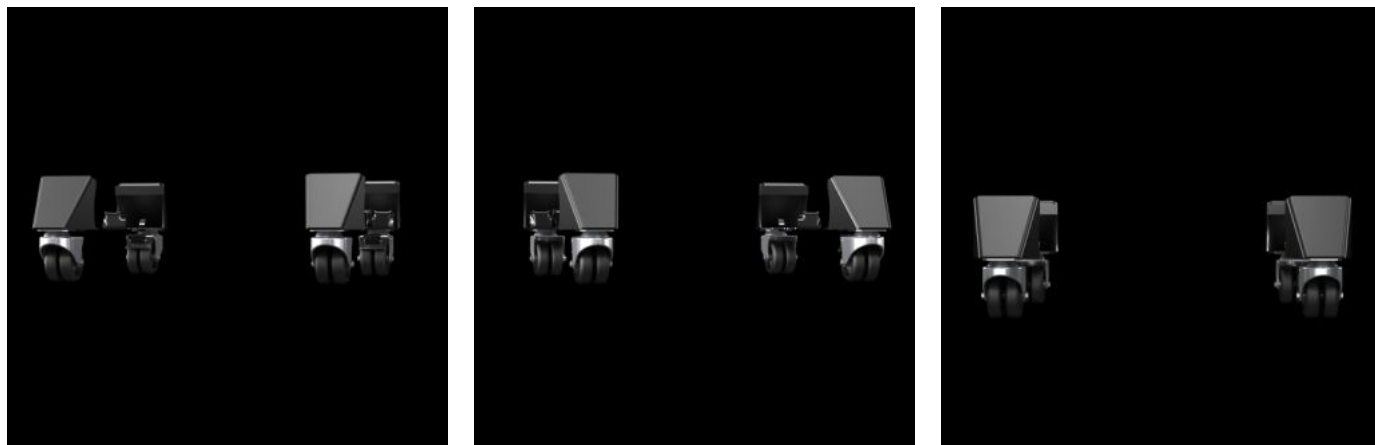
SOFTWARE & SERVICES

FRIEDHELM LOH GROUP



VX 8660.110 - Transport castors for base/plinth system VX, sheet steel

For locating onto the base/plinth corner piece 100 or 200 mm high.



Features

| | |
|-----------------------|---|
| Model No. | VX 8660.110 |
| Colour | RAL 9005 |
| Supply includes | 4 twin castors, 2 x with, 2 x without locks |
| Clearance floor | 100 mm |
| Load capacity | Max. dynamic load when using 4 twin castors (single enclosure): 3000 N |
| Weight/pack | 8.63 kg |
| Packs of | 1 pc(s). |
| Net weight | 8.4 |
| Gross weight | 8.631 |
| Customs tariff number | 83024900 |
| EAN | 4028177984837 |
| ETIM 9 | EC002621 |
| ETIM 8 | EC000721 |
| ECLASS 8.0 | 27182003 |