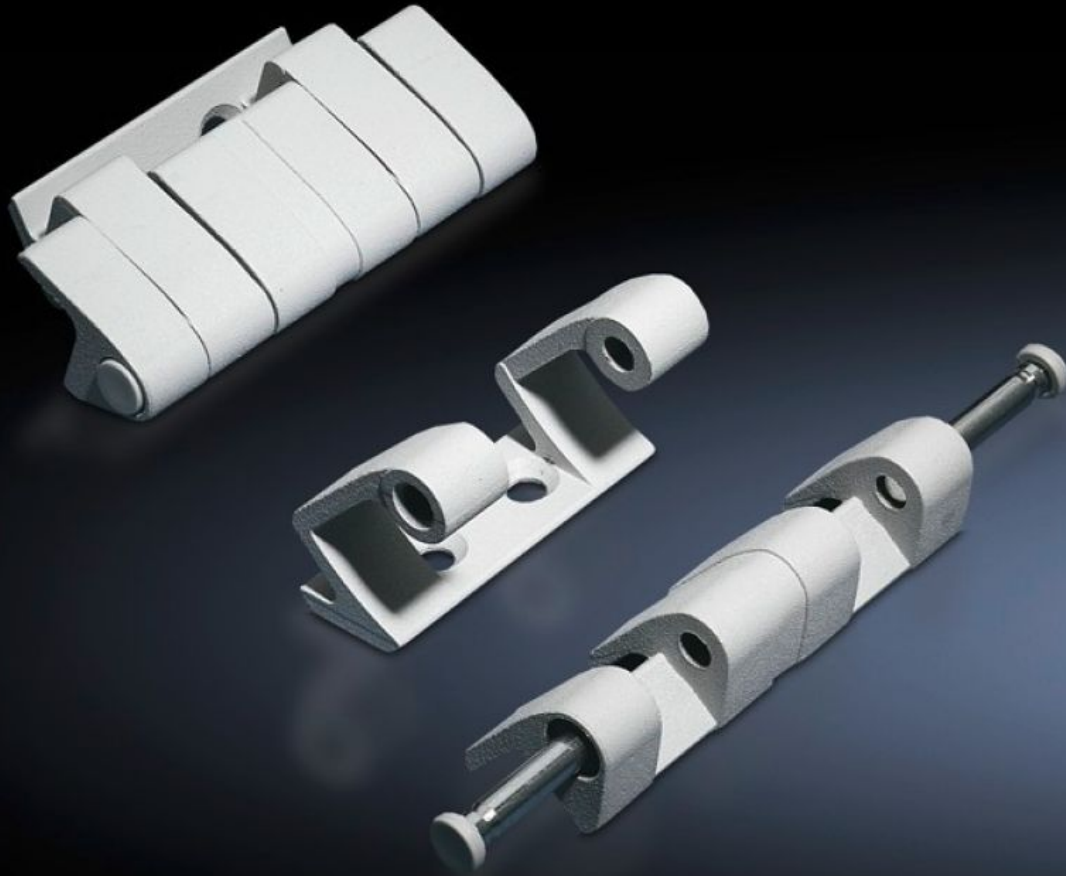


Rittal – The System.

Faster – better – everywhere.



SZ 8701.180 180° hinge

State: 5/04/2026 (Source: rittal.com/uk-en)

ENCLOSURES

POWER DISTRIBUTION

CLIMATE CONTROL

IT INFRASTRUCTURE

SOFTWARE & SERVICES

FRIEDHELM LOH GROUP



SZ 8701.180 - 180° hinge

To extend the door opening angle to 180°

Features

| | |
|---------------------------|--|
| Model No. | SZ 8701.180 |
| Material | Die-cast zinc |
| Colour | Matt nickel-plated |
| Supply includes | Assembly parts |
| Door opening angle | 180° |
| Note | The protection category of the enclosure may be reduced. The doors must be hinged on the same side when enclosures are bayed. |
| Suitable for door variant | Sheet steel door Stainless steel door |
| To fit enclosure type | TS VX SE |
| Packs of | 4 pc(s). |
| Net weight | 0.92 kg |
| Gross weight | 0.964 kg |
| Customs tariff number | 83021000 |
| ETIM 9 | EC001167 |
| ECLASS 8.0 | 27409219 |
| Product description | TS 180° hinges, for TS, VX SE, door option: sheet steel or stainless steel, matt nickel-plated |