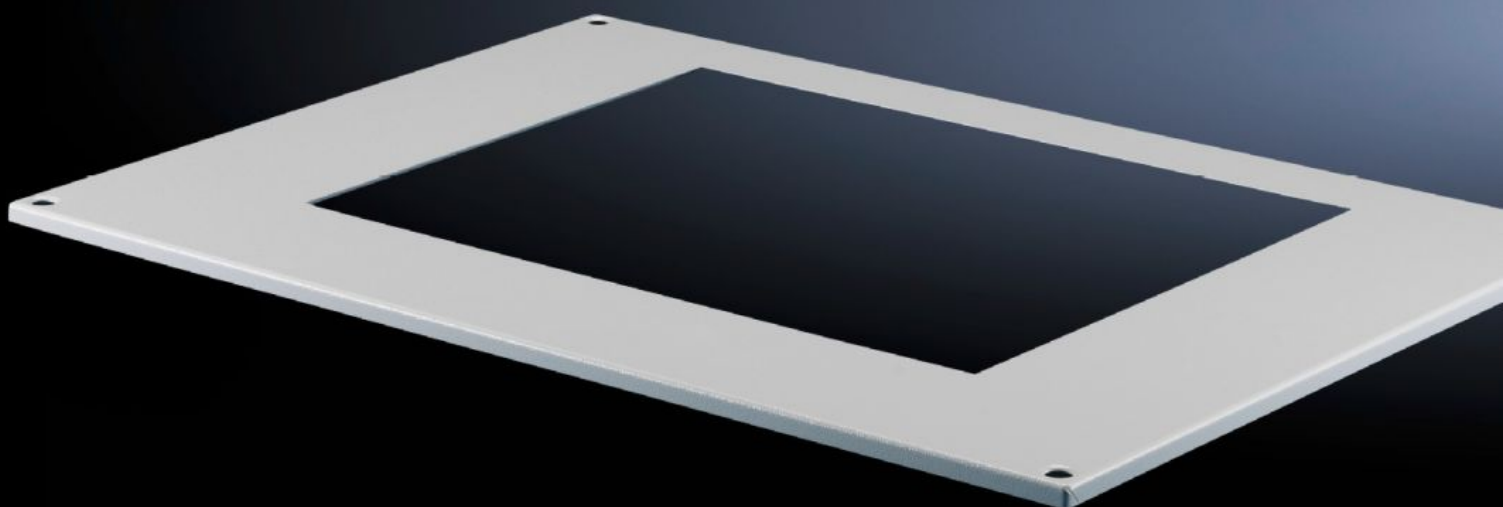
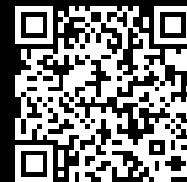


# Rittal – The System.

Faster – better – everywhere.



## TS 8801.340

### Roof plates TS

State: 14/05/2026 (Source: [rittal.com/uk-en](http://rittal.com/uk-en))

ENCLOSURES

POWER DISTRIBUTION

CLIMATE CONTROL

IT INFRASTRUCTURE

SOFTWARE & SERVICES

FRIEDHELM LOH GROUP



# TS 8801.340 - Roof plates TS

## Features

Model No.	TS 8801.340
Product description	For mounting roof-mounted units, roof-mounted air/water heat exchangers. The cut-outs in the roof plate are arranged so that the roof-mounted cooling units are positioned centrally on the enclosure.
Benefits	Simple, fast assembly
Material	Sheet steel
Colour	RAL 7035
Supply includes	Assembly parts
Mounting cut-out	Width:692 mm Depth:392 mm
Distance cut-out to back	57.8 mm
Note	When mounting cooling units on the roof plate 8801.310, there may be a collision with the enclosure eyebolts. For this reason, roof fastening screws are supplied loose with the roof plates. Attached to the roof plate 8801.340 from the inside using metal brackets and retaining clamps.
To fit Model No.	3386.... 3387....
Dimensions	Width: 767.5 mm Height: 13 mm Depth: 567.5 mm
To fit	Enclosure type: TS Width: = 800 mm Depth: = 600 mm
Packs of	1 pc(s).
Net weight	4.3 kg
Gross weight	4.5 kg

# Features

---

Customs tariff number	73269098
ETIM 9	EC000744
ECLASS 8.0	27182405
Product description	TS roof plates, for WD: 800 x 600 mm

---