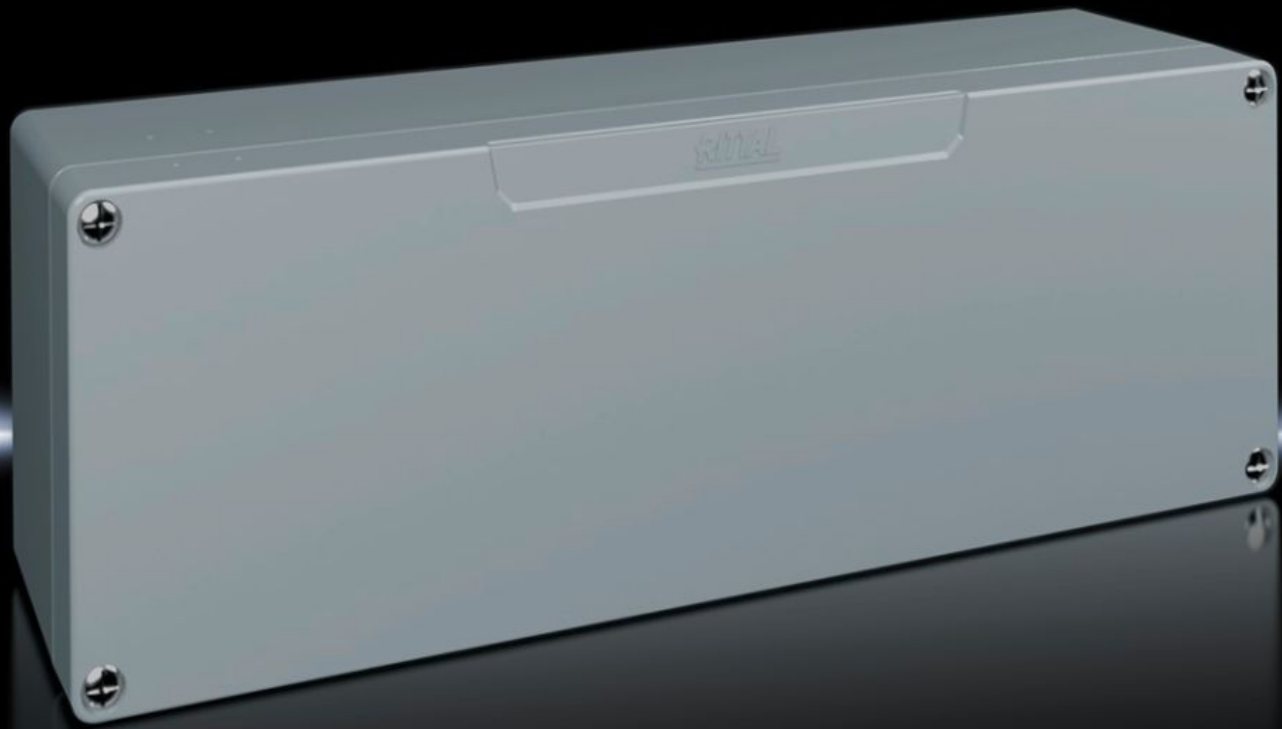


**Rittal – The System.**

Faster – better – everywhere.



**GA 9111.210**

**Cast aluminium enclosures GA**

State: 19/04/2026 (Source: [rittal.com/uk-en](http://rittal.com/uk-en))

ENCLOSURES

POWER DISTRIBUTION

CLIMATE CONTROL

IT INFRASTRUCTURE

SOFTWARE & SERVICES

FRIEDHELM LOH GROUP



# GA 9111.210 - Cast aluminium enclosures GA

Spray-finished cast aluminium enclosure. Protection category IP 66.



## Features

|                                   |                                                                                                                                 |
|-----------------------------------|---------------------------------------------------------------------------------------------------------------------------------|
| Model No.                         | GA 9111.210                                                                                                                     |
| Material                          | Enclosure: Cast aluminium<br>Cover: Cast aluminium, all-round CR cellular rubber cord seal                                      |
| Surface finish                    | Textured paint                                                                                                                  |
| Colour                            | RAL 7001                                                                                                                        |
| Supply includes                   | Enclosure with cover<br>Cover screws, captive<br>Screws for attaching support rails<br>Screw for connection of the PE conductor |
| Protection category NEMA          | NEMA 4                                                                                                                          |
| Protection category to IEC 60 529 | IP 66                                                                                                                           |
| IK Code                           | IK08                                                                                                                            |
| Dimensions                        | Width: 360 mm<br>Height: 120 mm<br>Depth: 84 mm                                                                                 |
| Basic material                    | Cast aluminium                                                                                                                  |
| Packs of                          | 1 pc(s).                                                                                                                        |
| Net weight                        | 2.2 kg                                                                                                                          |

# Features

---

|                       |                                                                                                    |
|-----------------------|----------------------------------------------------------------------------------------------------|
| Gross weight          | 2.36 kg                                                                                            |
| Customs tariff number | 84879090                                                                                           |
| ETIM 9                | EC000261                                                                                           |
| ECLASS 8.0            | 27180101                                                                                           |
| Product description   | GA Cast aluminium enclosure, WHD: 360x120x82 mm, Cast aluminum, without mounting plate, with cover |

# Approvals

---

|              |                                                           |
|--------------|-----------------------------------------------------------|
| Explanations | Declaration of conformity<br>Declaration of conformity UK |
|--------------|-----------------------------------------------------------|