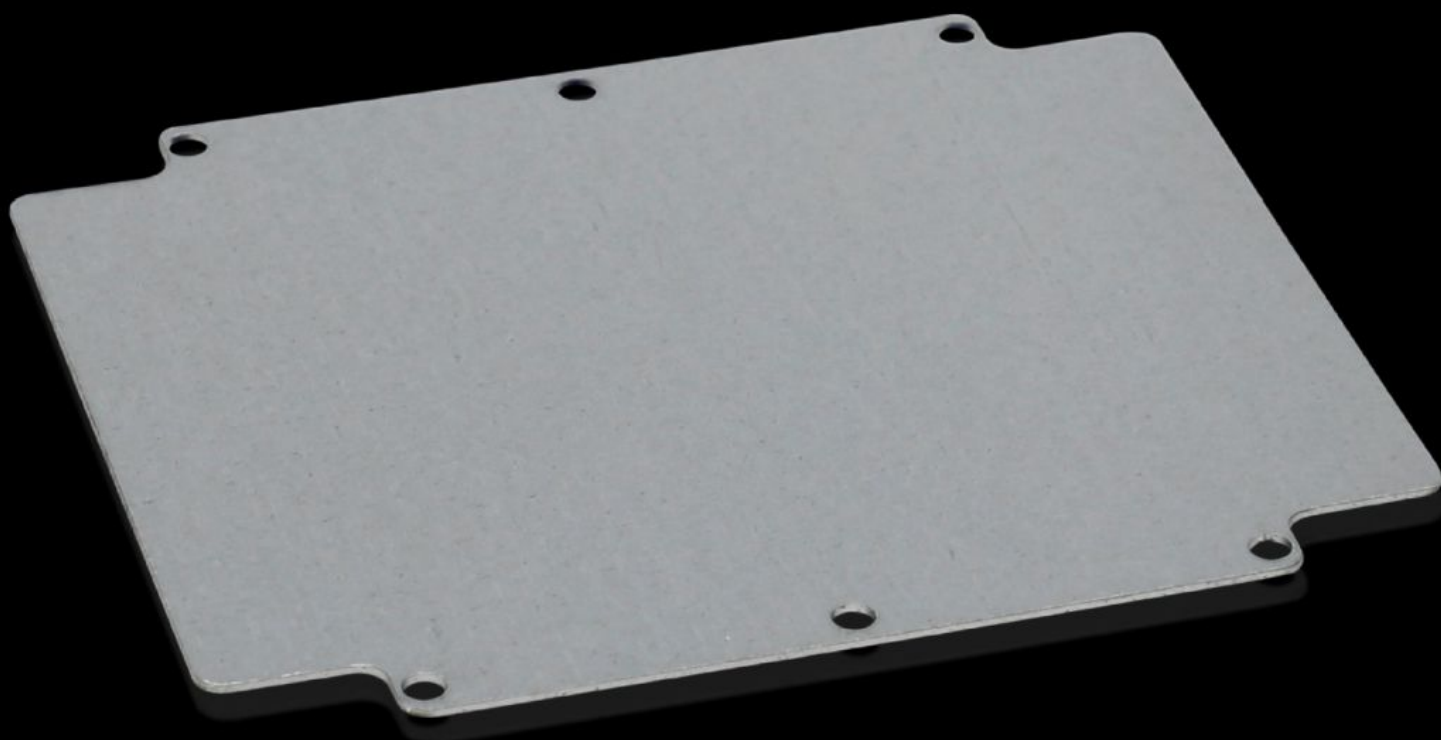


# Rittal – The System.

Faster – better – everywhere.



## GA 9116.700 Mounting plate

State: 16/02/2026 (Source: [rittal.com/uk-en](https://rittal.com/uk-en))

ENCLOSURES

POWER DISTRIBUTION

CLIMATE CONTROL

IT INFRASTRUCTURE

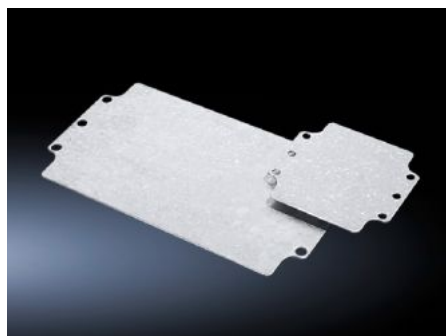
SOFTWARE & SERVICES

FRIEDHELM LOH GROUP



# GA 9116.700 - Mounting plate for GA

For individual interior installation, with mounting holes.



## Features

|                                   |  |
|-----------------------------------|--|
| Model No.                         | GA 9116.700  |
| Product description               | For universal interior installation, with mounting holes.  |
| Material                          | Sheet steel  |
| Surface finish                    | Zinc-plated  |
| Dimensions mounting plate (W x H) | 183 mm x 214 mm  |
| To fit                            | Enclosure type: GA<br>Width: = 202 mm<br>Height: = 232 mm  |
| Packs of                          | 1 pc(s).   |
| Net weight                        | 0.4  |
| Gross weight                      | 0.442  |
| PCF per pack (cradle-to-gate)     | 4.5 kg CO2 eq (Cat B)  |
| Note on PCF category              | Category B: PCF value (cradle-to-gate) based on the product weight, approximately calculated and self-declared |
| Customs tariff number             | 94039910   |
| EAN                               | 4028177154360  |
| ETIM 9                            | EC000213   |
| ECLASS 8.0                        | 27409216   |