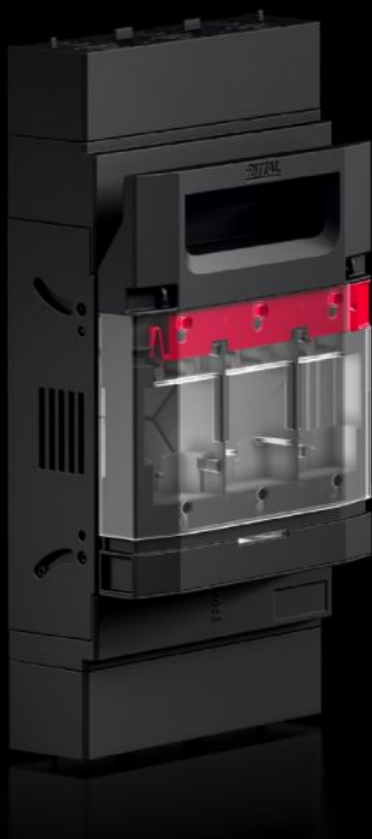


# Rittal – The System.

Faster – better – everywhere.



## RX 9362.215

## RiLineX Fuse-switch disconnecter

State: 19/07/2025 (Source: [rittal.com/uk-en](https://www.rittal.com/uk-en))

ENCLOSURES

POWER DISTRIBUTION

CLIMATE CONTROL

IT INFRASTRUCTURE

SOFTWARE & SERVICES

FRIEDHELM LOH GROUP



# RX 9362.215 - RiLineX Fuse-switch disconnecter

RiLineX NH fuse-switch disconnecter in size 2 for 60 mm busbar systems. The cover can be locked and prepared for a lead seal. It also has visual fuse monitoring. Integrated measuring points on the cover ensure safe voltage testing. NH fuse-switch disconnecters have a park position to make maintenance easier. Size M10 screw terminal connection. Cable outlet can be at the top or bottom, as required. Includes electronic fuse monitoring.

## Features

|                                               |                                                                                                                                                                                                                                                                                                                                                                         |
|-----------------------------------------------|-------------------------------------------------------------------------------------------------------------------------------------------------------------------------------------------------------------------------------------------------------------------------------------------------------------------------------------------------------------------------|
| Model No.                                     | RX 9362.215                                                                                                                                                                                                                                                                                                                                                             |
| Benefits                                      | Cover: can be locked and prepared for a lead seal<br>Voltage test through separate opening<br>Snap-on mounting up to 250 A and simple adjustment to busbar thickness 5/10 mm<br>Tool-free changeover of the cable outlet<br>Park position for simpler maintenance work<br>High rated voltage 800 V ready<br>All variants also available with electronic fuse monitoring |
| Material                                      | Polyamide (PA 6)<br>Fire protection corresponding to UL 94<br>Contact tracks: Electrolytic copper, silver-plated                                                                                                                                                                                                                                                        |
| Colour                                        | RAL 9005<br>RAL 35745                                                                                                                                                                                                                                                                                                                                                   |
| Supply includes                               | Connectors for electronic fuse monitoring                                                                                                                                                                                                                                                                                                                               |
| For bar systems with centre-to-centre spacing | 60 mm                                                                                                                                                                                                                                                                                                                                                                   |
| Cable outlet                                  | Top/bottom                                                                                                                                                                                                                                                                                                                                                              |
| Type of electrical connection                 | Screw M10                                                                                                                                                                                                                                                                                                                                                               |
| Rated operating current max.                  | 400 A                                                                                                                                                                                                                                                                                                                                                                   |
| Rated operating voltage                       | 690 V AC                                                                                                                                                                                                                                                                                                                                                                |
| For NH size                                   | 2                                                                                                                                                                                                                                                                                                                                                                       |
| Test specification                            | IEC/DIN EN 60 947-3<br>DIN EN 60 269-2 (fuse inserts)                                                                                                                                                                                                                                                                                                                   |

# Features

|                                      |                                                  |
|--------------------------------------|--------------------------------------------------|
| Dimensions                           | Width: 209 mm<br>Height: 349 mm<br>Depth: 135 mm |
| Operating temperature range          | -5 °C...35 °C                                    |
| Storage temperature range            | -25 °C...70 °C                                   |
| To fit busbars                       | 15 x 5/10<br>20 x 5/10<br>30 x 5/10              |
| To fit busbar system                 | RiLineX<br>RiLine60                              |
| Number of poles                      | 3-pole                                           |
| Contamination level                  | 3                                                |
| IP protection category to IEC 60 529 | IP 2XB                                           |
| Power dissipation (max.)             | 98 W                                             |
| Packs of                             | 1 pc(s).                                         |
| Net weight                           | 4.2                                              |
| Gross weight                         | 4.268                                            |
| Copper weight (kg per piece)         | 1.75                                             |
| Customs tariff number                | 85369095                                         |
| ETIM 9                               | EC001040                                         |

# Approvals

|              |                           |
|--------------|---------------------------|
| Explanations | Declaration of conformity |
|--------------|---------------------------|