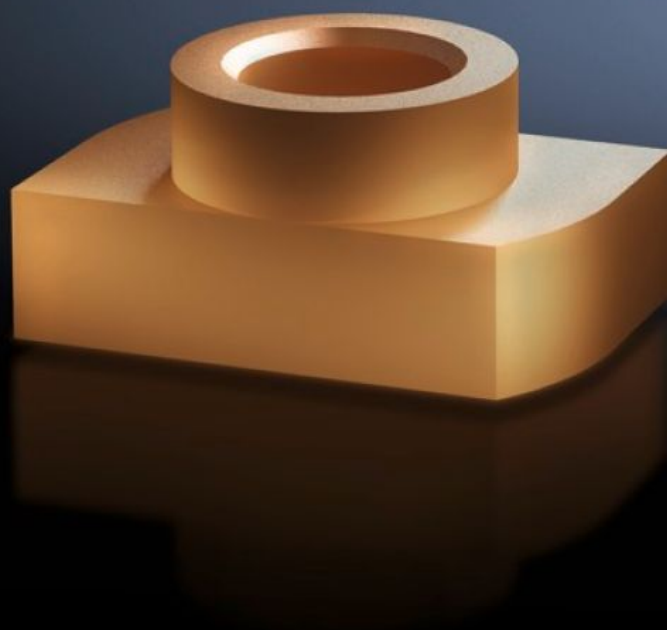
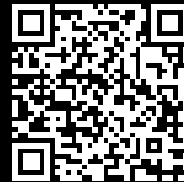


# Rittal – The System.

Faster – better – everywhere.



## SV 9650.905

## Sliding nut

State: 20/02/2026 (Source: [rittal.com/uk-en](https://rittal.com/uk-en))

ENCLOSURES

POWER DISTRIBUTION

CLIMATE CONTROL

IT INFRASTRUCTURE

SOFTWARE & SERVICES

FRIEDHELM LOH GROUP



# SV 9650.905 - Sliding nut for Maxi-PLS busbars

May be retro-fitted by sliding into the Maxi-PLS busbar section.

## Features

Model No.	SV 9650.905
Product description	For attaching flat copper bars and connection components to Maxi-PLS busbars. For sliding into the busbar section retrospectively and tightening the threaded bolts.
Material	E-Cu
To fit busbars	Maxi-PLS 60
Dimensions	Thread: M8
Packs of	3 pc(s).
Net weight	0.069 kg
Gross weight	0.075 kg
Customs tariff number	73181692
ETIM 9	EC000096
ECLASS 8.0	23110804
Product description	SV Sliding nut, M8, (Maxi-PLS 3200)