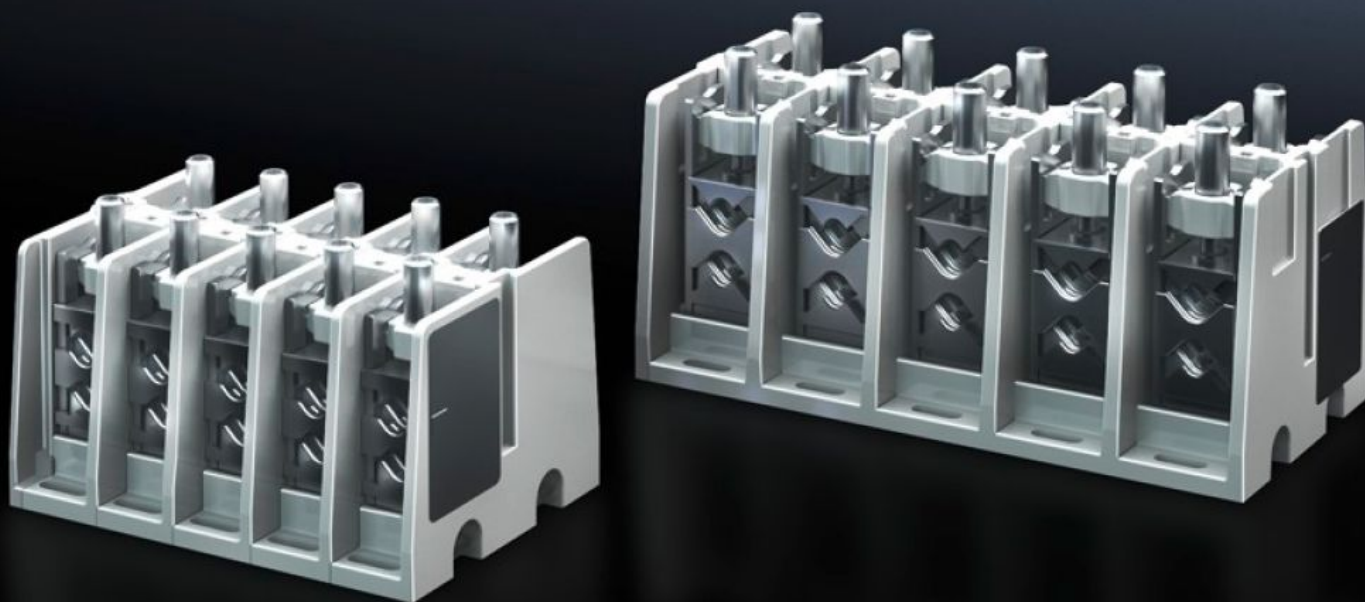
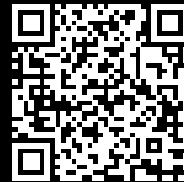


# Rittal – The System.

Faster – better – everywhere.



## SV 9666.350 Connection terminal block

State: 24/08/2025 (Source: [rittal.com/uk-en](http://rittal.com/uk-en))

ENCLOSURES

POWER DISTRIBUTION

CLIMATE CONTROL

IT INFRASTRUCTURE

SOFTWARE & SERVICES

FRIEDHELM LOH GROUP



# SV 9666.350 - Connection terminal block

For connecting copper and aluminium conductors as well as laminated copper bars.

## Features

Model No.	SV 9666.350
Product description	For connecting copper and aluminium conductors. For laminated copper bars or solid and stranded conductors with a pressed wire end ferrule.
Material	Duroplastic
Colour	RAL 7035
Supply includes	Assembly parts
Assembly instruction	Contact hazard protection module 9666.020 is additionally required to cover the connection terminal block.
Rated current max.	400 A
Number of poles	5-pole
Connection of round conductors	50 - 240 2 x 25 - 120
Clamping area for laminated copper bars (W x H)	25 x 21 mm
Packs of	1 pc(s).
Net weight	4.807
Gross weight	5.08
Customs tariff number	39211900
EAN	4028177676336
ETIM 9	EC001894
ECLASS 8.0	27400613

# Approvals

---

Explanations

Declaration of conformity

Declaration of conformity UK