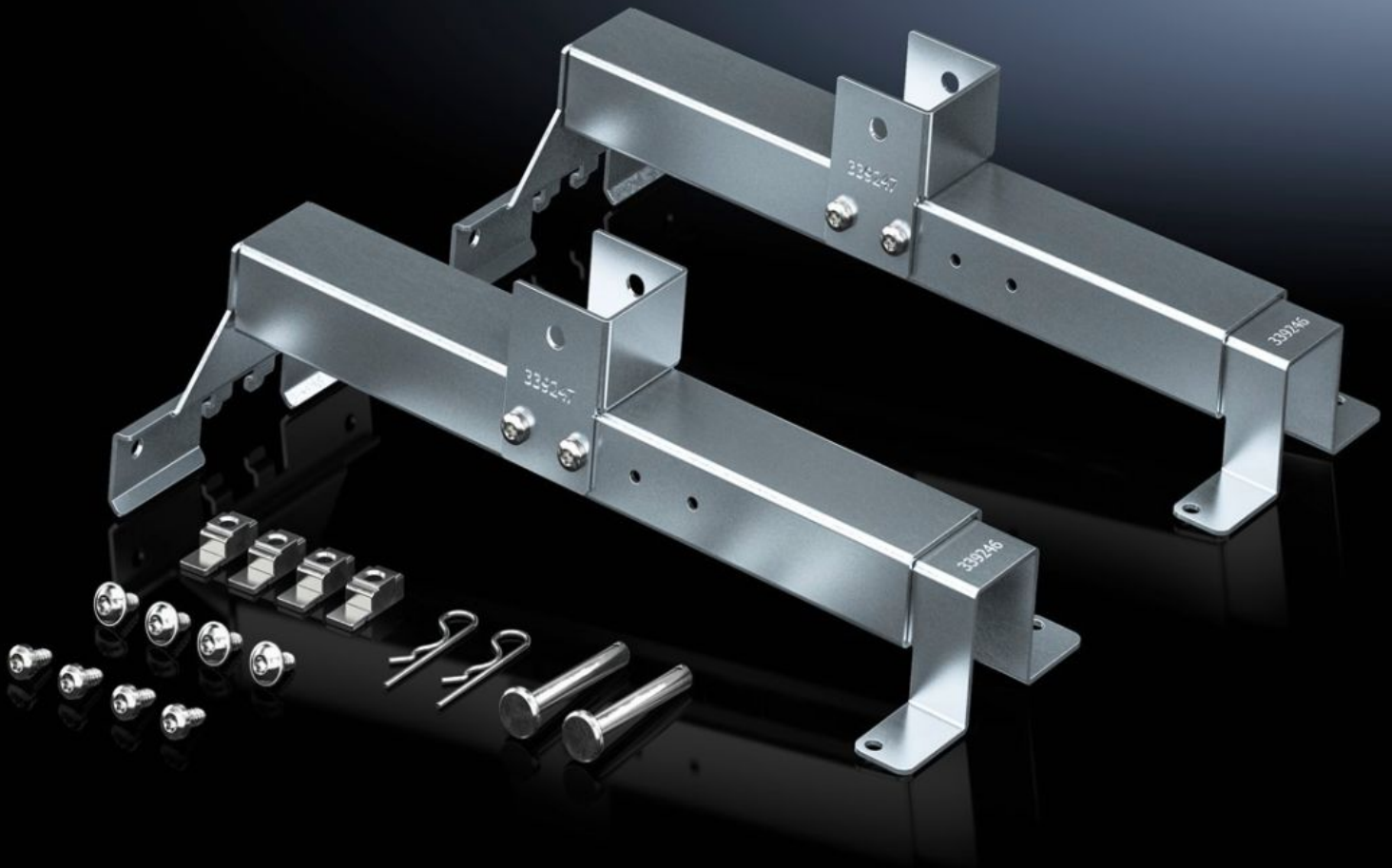


# Rittal – The System.

Faster – better – everywhere.



## SV 9666.732

## Depth stay

State: 1/06/2026 (Source: [rittal.com/uk-en](http://rittal.com/uk-en))

ENCLOSURES

POWER DISTRIBUTION

CLIMATE CONTROL

IT INFRASTRUCTURE

SOFTWARE & SERVICES

FRIEDHELM LOH GROUP



# SV 9666.732 - Depth stay for installation kit ISV

For attaching the ISV installation kit in the enclosure.

## Features

Model No.	SV 9666.732
Product description	For attaching the installation kit in the enclosure.
Material	Sheet steel
Surface finish	Zinc-plated
Supply includes	Assembly parts
To fit Model No.	9666.902 9666.912 9666.922 9666.932
To fit	Enclosure type: VX Depth: = 400 mm = 500 mm = 600 mm
Packs of	2 pc(s).
Net weight	3.04 kg
Gross weight	3.04 kg
PCF per pack (cradle-to-gate)	12.3 kg CO2 eq (Cat B)
Note on PCF category	Category B: PCF value (cradle-to-gate) based on the product weight, approximately calculated and self-declared
Customs tariff number	73269098
ETIM 9	EC002270
ECLASS 8.0	27400613
Product description	VX Depth stay (ISV), (depth 400/500/600 mm),