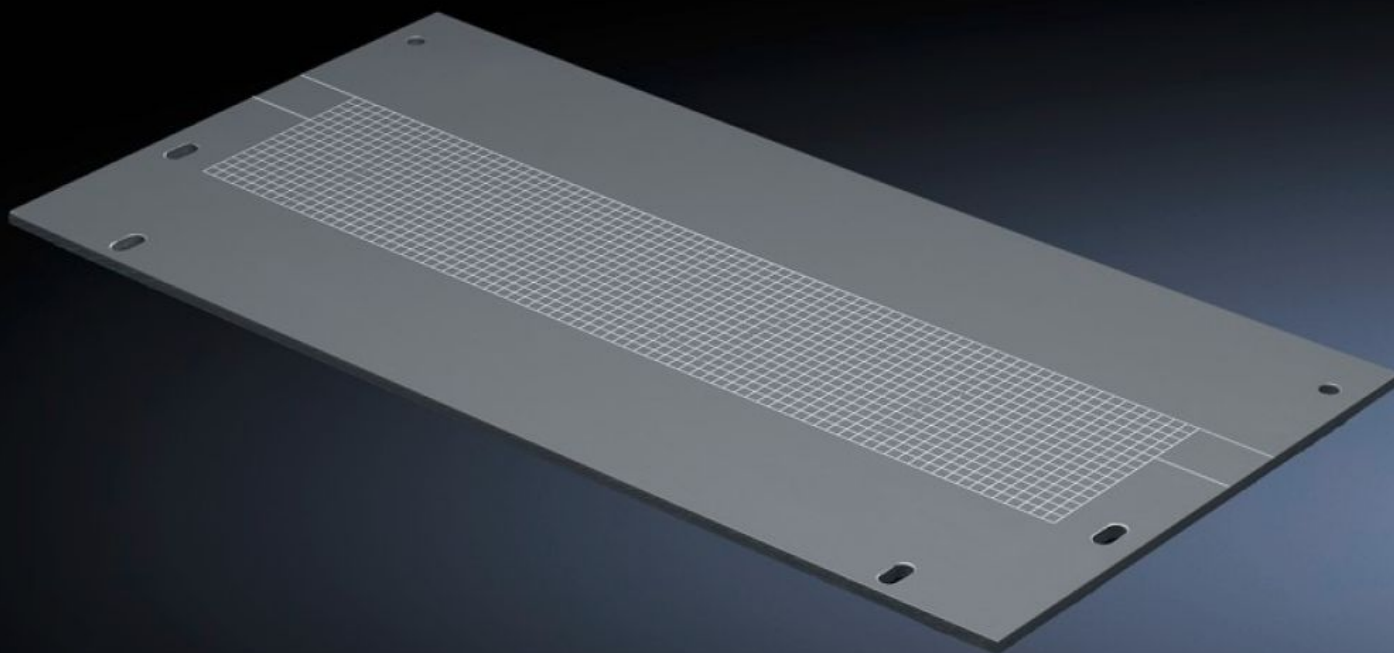


Rittal – The System.

Faster – better – everywhere.



SV 9673.506

Gland plate

State: 17/02/2026 (Source: [rittal.com/uk-en](https://www.rittal.com/uk-en))

ENCLOSURES

POWER DISTRIBUTION

CLIMATE CONTROL

IT INFRASTRUCTURE

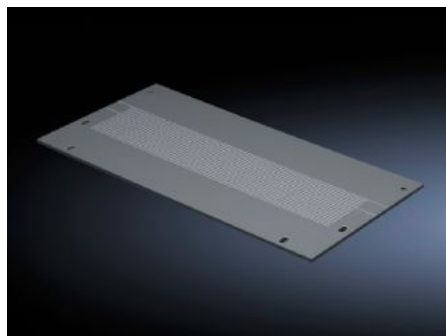
SOFTWARE & SERVICES

FRIEDHELM LOH GROUP



SV 9673.506 - Gland plate for compartment divider with duct

To shroud the opening for vertical busbar systems.



Features

Model No.	SV 9673.506
Product description	To shroud the opening for vertical busbar systems.
Material	ABS PMMA
Dimensions	Width: 450 mm Height: 223.5 mm
To fit	Width: = 600 mm
Packs of	4 pc(s).
Net weight	1.6 kg
Gross weight	1.733 kg
Customs tariff number	39269097
ETIM 9	EC002525
ECLASS 8.0	27400613
Product description	SV Gland plate, WH: 450x223,5 mm, for compartment divider with duct, for TS (W: 600 mm)