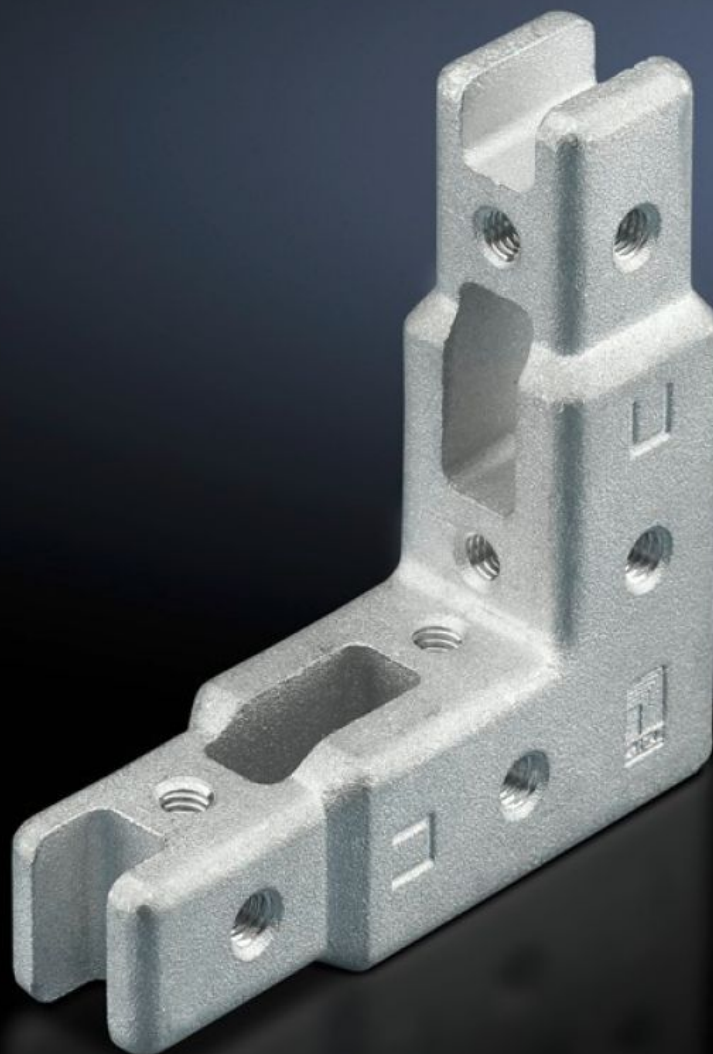
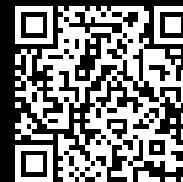


Rittal – The System.

Faster – better – everywhere.



SV 9673.902 Corner connector

State: 15/02/2026 (Source: rittal.com/uk-en)

ENCLOSURES

POWER DISTRIBUTION

CLIMATE CONTROL

IT INFRASTRUCTURE

SOFTWARE & SERVICES

FRIEDHELM LOH GROUP



SV 9673.902 - Corner connector for TS punched rail 17 x 17 mm

For TS punched rail 17 x 17 mm.



Features

| | |
|-----------------------|---|
| Model No. | SV 9673.902 |
| Product description | Mounting piece with integral M4 threaded holes. |
| Applications | For connecting two TS punched rails at an angle of 90° across the corner Essential for building the auxiliary construction for the busbar space separation |
| Material | Die-cast zinc |
| Supply includes | Assembly parts |
| Packs of | 10 pc(s). |
| Net weight | 1 |
| Gross weight | 1.079 |
| Customs tariff number | 79070000 |
| EAN | 4028177543218 |
| ETIM 9 | EC002525 |
| ECLASS 8.0 | 27189234 |