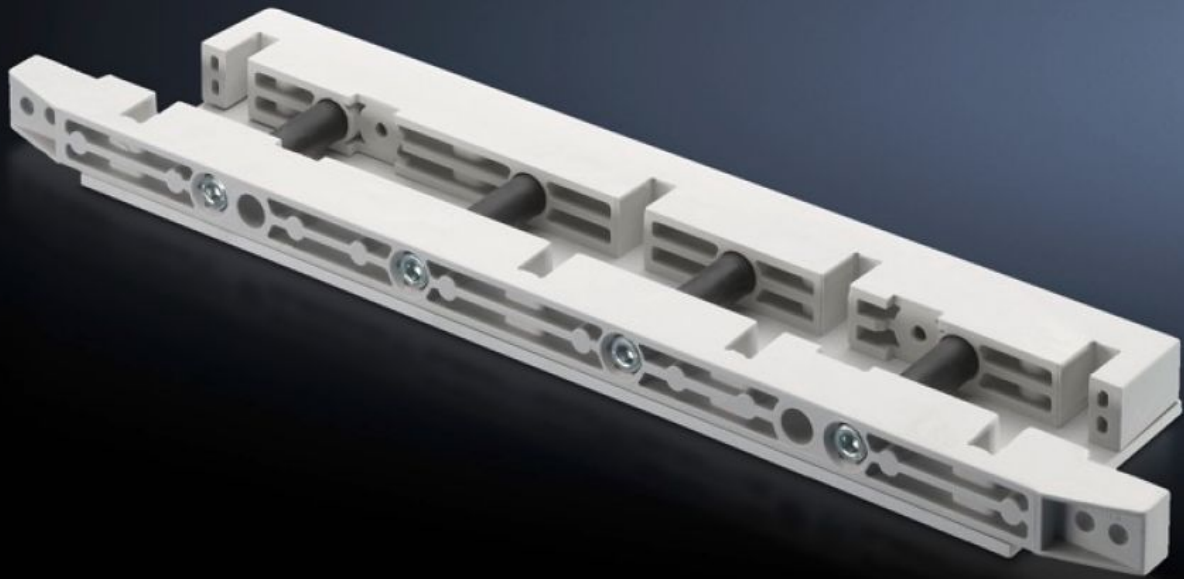


Rittal – The System.

Faster – better – everywhere.



SV 9674.430 End support

State: 12/05/2026 (Source: rittal.com/uk-en)

ENCLOSURES

POWER DISTRIBUTION

CLIMATE CONTROL

IT INFRASTRUCTURE

SOFTWARE & SERVICES

FRIEDHELM LOH GROUP



SV 9674.430 - End support for fuse-switch disconnecter section

End support for the distribution busbar system, for vertical support of the distribution busbar system with infeed from above.

Features

Model No.	SV 9674.430
Product description	End support for the distribution busbar system of the fuse-switch disconnecter section, for vertical support of the distribution busbar system with infeed from above.
Material	Duroplastic polyester
Supply includes	Mounting bracket and screws
To fit busbars	Width: 100 Height: 10 mm
Number of poles	3-pole 4-pole
Packs of	1 pc(s).
Net weight	1.679 kg
Gross weight	1.72 kg
Customs tariff number	39269097
ETIM 9	EC001166
ECLASS 8.0	27400613
Product description	SV End support, for busbar WH: 100x10 mm, (fuse-switch disconnecter section)

Approvals

Approvals

Explanations

Declaration of conformity

Declaration of conformity UK