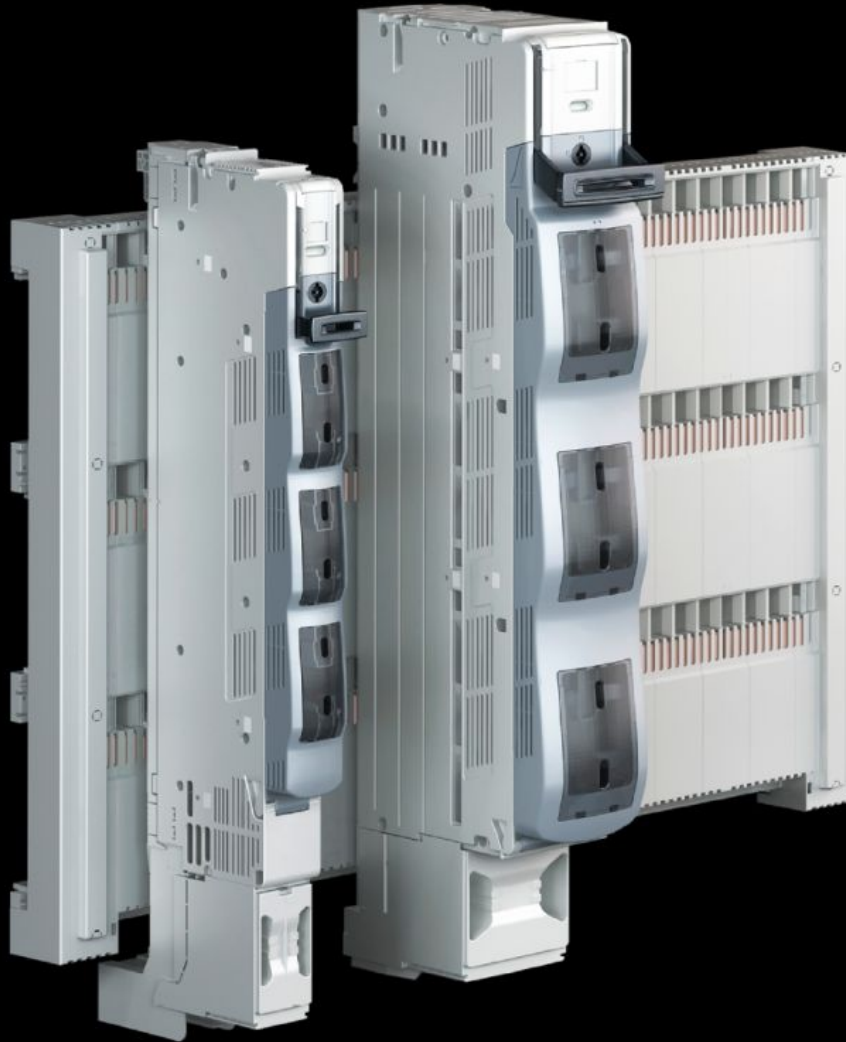


**Rittal – The System.**

Faster – better – everywhere.



**SV 9677.070**

**NH slimline switch-disconnector**

State: 11/07/2025 (Source: [rittal.com/uk-en](http://rittal.com/uk-en))

ENCLOSURES

POWER DISTRIBUTION

CLIMATE CONTROL

IT INFRASTRUCTURE

SOFTWARE & SERVICES

FRIEDHELM LOH GROUP



# SV 9677.070 - NH slimline switch-disconnector

3-pole, for bar systems with 185 mm centre-to-centre spacing.

## Features

|   |  |
|---|--|
| Model No.                                     | SV 9677.070  |
| Design  | 3-pole, switchable   |
| Function principle                            | Automatic quick-break contact allows operator-independent switching<br>Double-break for reliable disconnection of the contacts |
| Material                                      | Polyamide<br>Fire protection corresponding to UL 94-V0<br>Contact tracks: Partially silver-plated hard copper                  |
| Colour  | Chassis: RAL 7035<br>Cover: RAL 7001<br>Handle: RAL 7016   |
| For NH size                                   | 00   |
| For bar systems with centre-to-centre spacing | 185 mm   |
| Cable outlet                                  | Top  |
| Type of electrical connection                 | Screw M8   |
| Installation type                             | Clamping attachment  |
| Number of poles                               | 3-pole   |
| Rated operating voltage                       | 690 V, 3~  |
| Rated operating current max.                  | 160 A  |
| Test specification                            | IEC/DIN EN 60 947-3<br>DIN EN 60 269-2 (fuse inserts)  |
| For converter installation                    | Yes  |
| Dimensions                                    | Width: 50 mm<br>Height: 676 mm   |
| Connection of round conductors                | 1.5 - 95 mm <sup>2</sup>   |

# Features

---

|                              |               |
|------------------------------|---------------|
| To fit busbars               | Height: 10 mm |
| Packs of                     | 1 pc(s).      |
| Net weight                   | 4.82          |
| Gross weight                 | 5.02          |
| Copper weight (kg per piece) | 1.072         |
| Customs tariff number        | 85043129      |
| EAN                          | 4028177806702 |
| ETIM 9                       | EC001040      |
| ECLASS 8.0                   | 27371401      |

# Approvals

---

|              |   |
|--------------|---|
| Explanations | Declaration of conformity<br>Declaration of conformity UK |
|--------------|---|