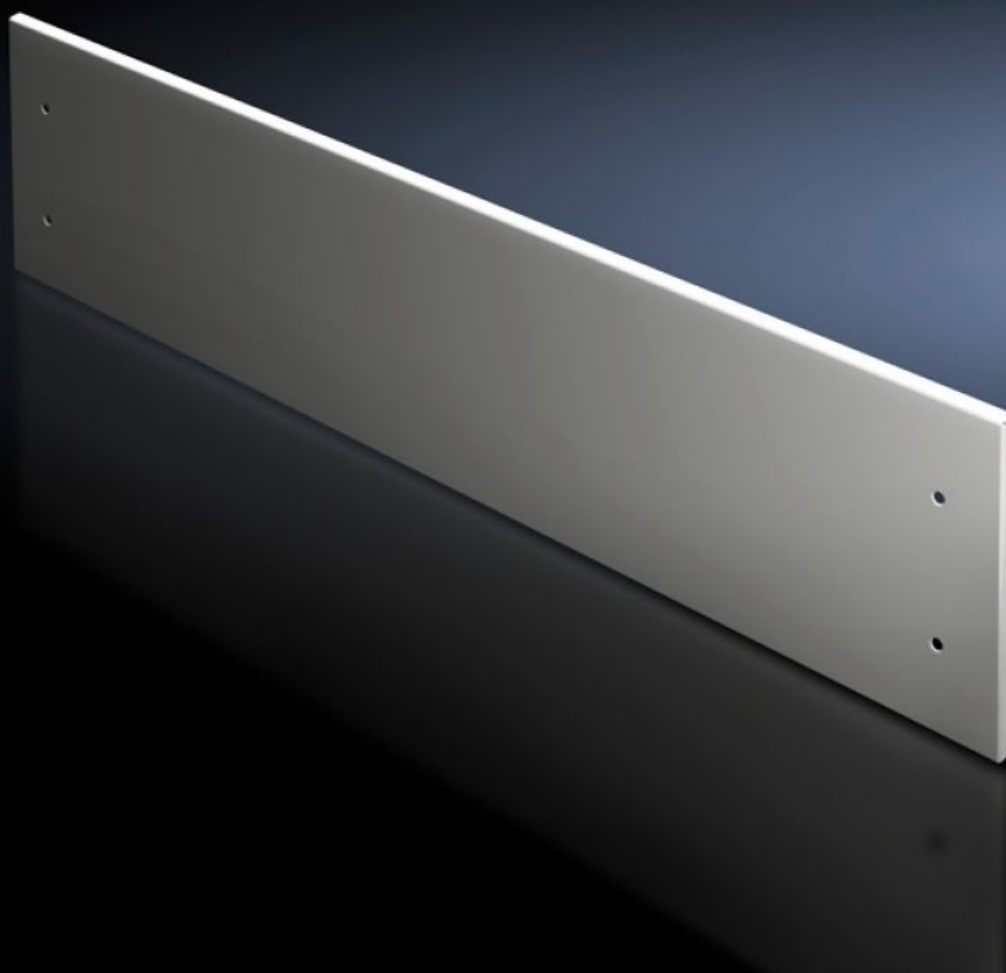


Rittal – The System.

Faster – better – everywhere.



SV 9682.324

Front trim panel, top, solid

State: 15/09/2025 (Source: [rittal.com/uk-en](https://www.rittal.com/uk-en))

ENCLOSURES

POWER DISTRIBUTION

CLIMATE CONTROL

IT INFRASTRUCTURE

SOFTWARE & SERVICES

FRIEDHELM LOH GROUP



SV 9682.324 - Front trim panel, top, solid for VX

To finish off at the top when using partial doors.



Features

| | |
|-------------------------------|---|
| Model No. | SV 9682.324 |
| Design | solid |
| Product description | To finish off the modular front design at the top when using partial doors. The front trim panels may be removed from the outside by unscrewing. The cross member required for mounting is included with the supply of the mounted partial doors. |
| Material | Sheet steel, 1.5 mm |
| Surface finish | Textured paint |
| Colour | RAL 7035 |
| Supply includes | Assembly parts |
| Dimensions | Height: 300 mm |
| To fit | Width: = 400 mm |
| Packs of | 1 pc(s). |
| Net weight | 1.96 |
| Gross weight | 2.28 |
| PCF per pack (cradle-to-gate) | 8.6 kg CO2 eq (Cat B) |
| Note on PCF category | Category B: PCF value (cradle-to-gate) based on the product weight, approximately calculated and self-declared |
| Customs tariff number | 83024200 |

Features

| | |
|------------|---------------|
| EAN | 4028177929647 |
| ETIM 9 | EC000456 |
| ECLASS 8.0 | 27142423 |

Approvals

| | |
|--------------|---|
| Approvals | DNV-GL Lloyds Register of Shipping UL + C-UL (listed) UL + C-UL - FTTA |
| Explanations | Declaration of conformity Declaration of conformity UK |