

Rittal – The System.

Faster – better – everywhere.



AX 1454.000

AX Fiberglass-Reinforced Polyester Enclosures

State: 6/2/2026 (Source: rittal.com/us-en)

ENCLOSURES

POWER DISTRIBUTION

CLIMATE CONTROL

IT INFRASTRUCTURE

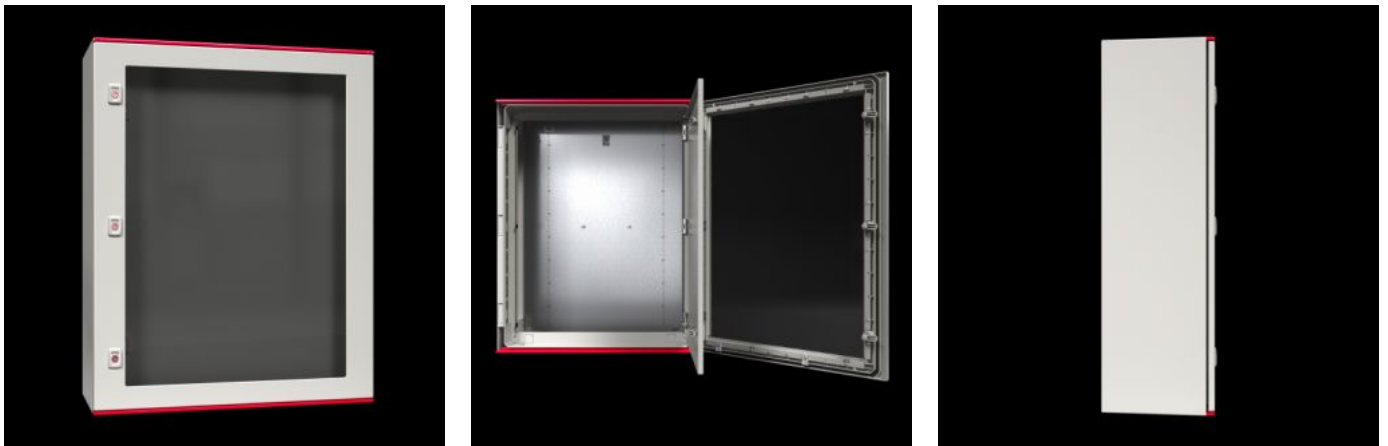
SOFTWARE & SERVICES

FRIEDHELM LOH GROUP



AX 1454.000 - AX Fiberglass-Reinforced Polyester Enclosures with viewing window

AX plastic housings with a viewing window are ideal for applications in demanding areas. Numerous mounting domes in the enclosure provide individual interior installation options in a 25 mm pitch pattern with chassis and rails, for example.



Features

Model No.	AX 1454.000
Version	with viewing window
Material	Housing and door: Fiberglass-reinforced unsaturated polyester Door: All-round foamed-in PU seal Mounting plate: Carbon steel Viewing window: Polycarbonate Fire protection corresponding to UL 94-V0 Halogen-free
Surface finish	Housing and door: Dyed plastic with no after-treatment Mounting panel: Zinc-plated
Color	Similar to RAL 7035
Supply includes	Enclosure with hinged door with viewing window, of all-round solid construction, 3 mm double-bit lock Door hinged on the right, may be swapped to the left Mounting panel Twin seal on the top and bottom edges of the door as integral rain protection strip

Features

Note	When used under long-term exposure to UV radiation (sunlight) and rain, we recommend painting the surface with a PUR paint to avoid visual impairment of the surface. Price and lead time on request.
Protection category NEMA	NEMA 1 NEMA 3R NEMA 3RX NEMA 4 NEMA 4X NEMA 12
Protection category IP to EN 60529	IP 56
Type rating according to UL 50E	Type 1 Type 3R Type 3RX Type 4 Type 4X Type 12
Protection category	II (at 1000 V AC)
IK code	IK09
Dimensions	Width: 500 mm Height: 500 mm Depth: 300 mm Width: 19.7 " Height: 19.7 " Depth: 11.8 "
Material thickness – mounting plate	3 mm 0.12 "
Dimensions of mounting plate (W x H)	405 mm x 425 mm 15.9 " x 16.7 "
Door opening angle	130°
No. of locks	2
With viewing window	Yes
Base material	Plastic
Standards	Meets F1 outdoor rating according to UL 746C

Features

Mounting tip	Interior installation screws are required to secure components inside the enclosure Components in the 25 mm pitch pattern can be secured with the universal bracket, e.g. system chassis
Packaging unit	1 pc(s).
Net weight	13.9 kg
Gross weight	15.08 kg
Customs tariff number	94037000
ETIM 9	EC000261
ETIM 8	EC000261
ECLASS 8.0	27180101
Product description	AX plastic enclosure, WHD: 500x500x300 mm, with viewing window

Approvals

Approvals	DNV Lloyds Register UL + C-UL (listed)
Certificates	Negative Certificate Surface finish Protection category
Explanations	Declaration of conformity Declaration of conformity UK