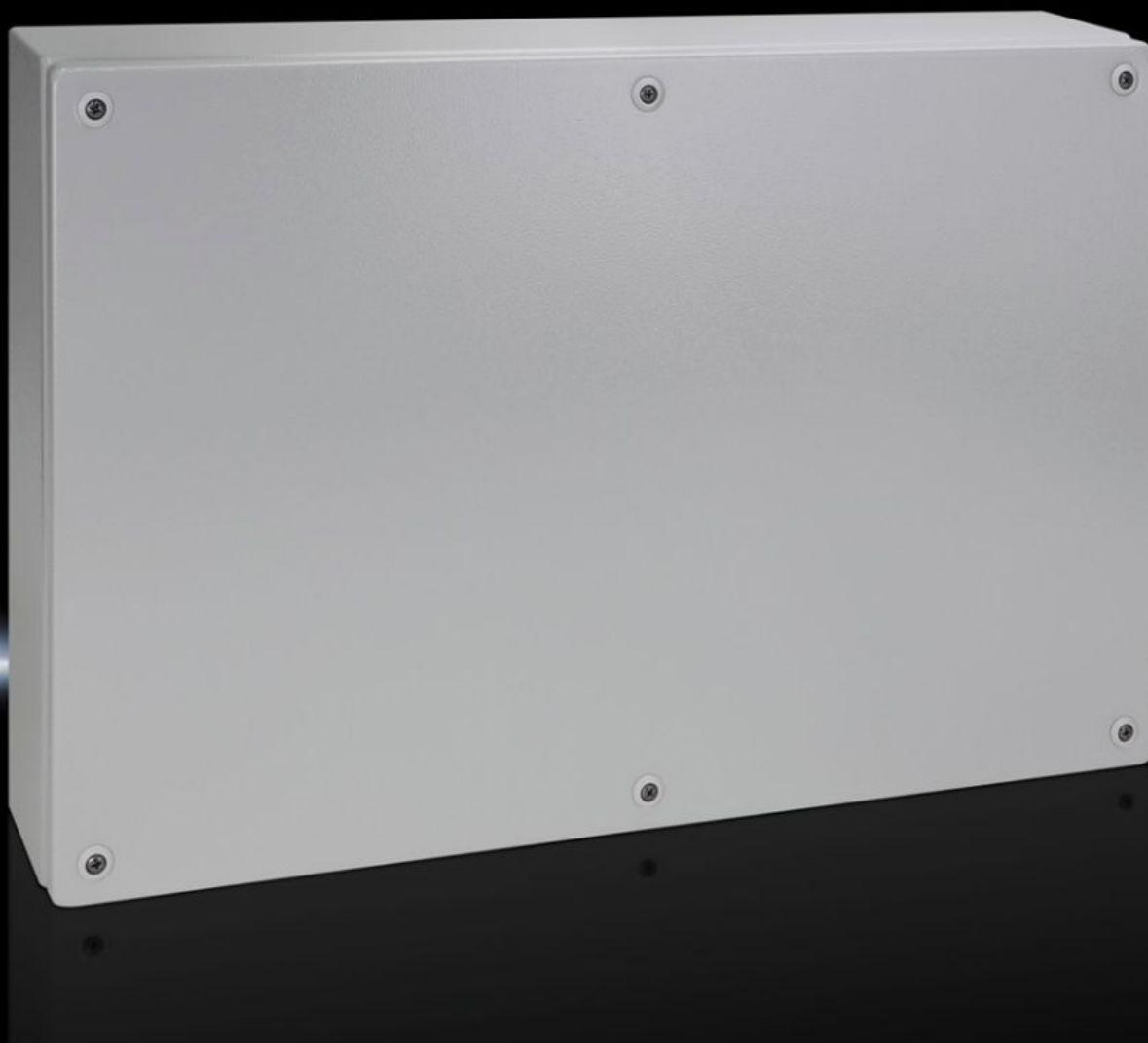


Rittal – The System.

Faster – better – everywhere.



KL 1512.510

KL Terminal Boxes

State: 8/22/2025 (Source: rittal.com/us-en)

ENCLOSURES

POWER DISTRIBUTION

CLIMATE CONTROL

IT INFRASTRUCTURE

SOFTWARE & SERVICES

FRIEDHELM LOH GROUP



KL 1512.510 - KL Terminal Boxes without gland plate

Spray-finished housing with sheet steel cover, without gland panel. Protection category IP 66.



Features

Model No.	KL 1512.510
Material	Housing: Carbon steel Cover: Carbon steel, all-round foamed-in PU seal
Surface finish	Housing and cover: Dipcoat primed, powder-coated on the outside, textured paint
Color	RAL 7035
Supply includes	Housing with cover Quick-release fasteners including plastic bushings
Protection category NEMA	NEMA 4
Protection category IP to EN 60529	IP 66
IK code	IK08
Dimensions	Width: 600 mm Height: 400 mm Depth: 120 mm Width: 23.6 " Height: 15.7 " Depth: 4.72 "
Material thickness - cover	1.25 mm 0.05 "

Features

Material thickness - enclosure	1.38 mm 0.05 "
Base material	Carbon steel
Packaging unit	1 pc(s).
Net weight	7.931
Gross weight	8.6
Customs tariff number	73269098
EAN	4028177251243
E-Number Sweden	E3404674
ECLASS 8.0	27180101

Approvals

Approvals	Bureau Veritas DNV-GL Lloyds Register of Shipping UL + C-UL (listed)
Explanations	Manufacturer's declaration Declaration of conformity UK