

Rittal – The System.

Faster – better – everywhere.



KL 1516.510

KL Terminal Boxes

State: 12/8/2025 (Source: [rittal.com/us-en](https://www.rittal.com/us-en))

ENCLOSURES

POWER DISTRIBUTION

CLIMATE CONTROL

IT INFRASTRUCTURE

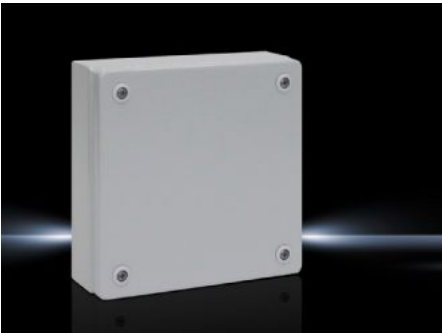
SOFTWARE & SERVICES

FRIEDHELM LOH GROUP



KL 1516.510 - KL Terminal Boxes without gland plate

Spray-finished housing with sheet steel cover, without gland panel. Protection category IP 66.



Features

Model No.	KL 1516.510
Material	Housing: Carbon steel Cover: Carbon steel, all-round foamed-in PU seal
Surface finish	Housing and cover: Dipcoat primed, powder-coated on the outside, textured paint
Color	RAL 7035
Supply includes	Housing with cover Quick-release fasteners including plastic bushings
Protection category NEMA	NEMA 4
Protection category IP to EN 60529	IP 66
IK code	IK08
Dimensions	Width: 200 mm Height: 200 mm Depth: 80 mm Width: 7.87 " Height: 7.87 " Depth: 3.15 "
Material thickness - cover	1.25 mm 0.05 "

Features

Material thickness - enclosure	1.25 mm 0.05 "
Base material	Carbon steel
Packaging unit	1 pc(s).
Net weight	1.586
Gross weight	1.786
Customs tariff number	73269098
EAN	4028177251281
E-Number Sweden	E3404678
ETIM 9	EC000261
ETIM 8	EC000261
ECLASS 8.0	27180101

Approvals

Approvals	Bureau Veritas DNV-GL Lloyds Register of Shipping UL + C-UL (listed)
Explanations	Manufacturer's declaration Declaration of conformity UK