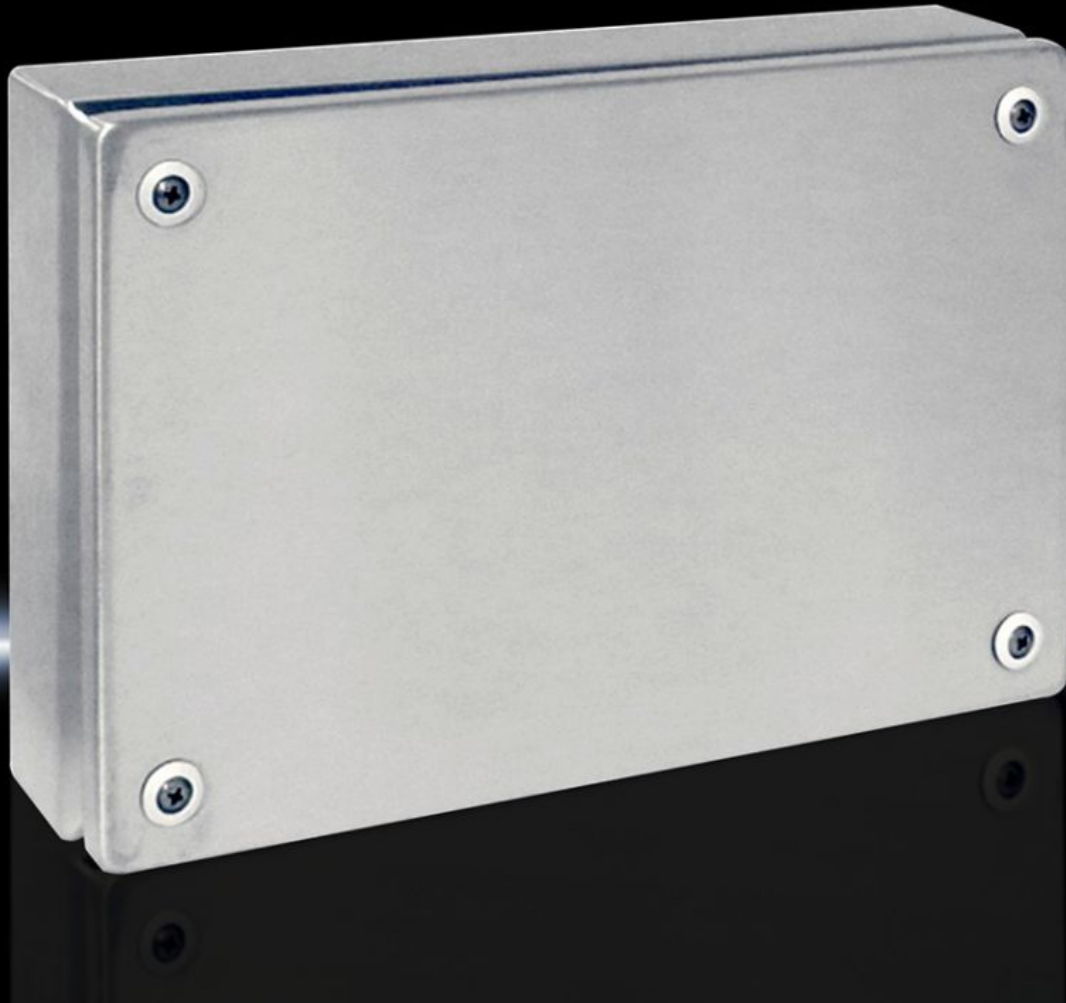


# Rittal – The System.

Faster – better – everywhere.



## KL 1524.010 KL Terminal Boxes

State: 4/5/2026 (Source: [rittal.com/us-en](http://rittal.com/us-en))

ENCLOSURES

POWER DISTRIBUTION

CLIMATE CONTROL

IT INFRASTRUCTURE

SOFTWARE & SERVICES

FRIEDHELM LOH GROUP



# KL 1524.010 - KL Terminal Boxes Stainless steel

Terminal box of stainless steel 1.4301, (AISI 304). Protection category IP 66.

## Features

Model No.	KL 1524.010
Material	Housing: Stainless steel 1.4301 (AISI 304) Cover: Stainless steel 1.4301 (AISI 304), all-round foamed-in PU seal
Surface finish	Housing and cover: Brushed, grain 180
Supply includes	Housing with cover Quick-release fasteners including plastic bushings
Protection category NEMA	NEMA 4X
Protection category IP to EN 60529	IP 66
IK code	IK08
Dimensions	Width: 300 mm Height: 200 mm Depth: 80 mm Width: 11.8 " Height: 7.87 " Depth: 3.15 "
Material thickness - cover	1.25 mm 0.05 "
Material thickness - enclosure	1.25 mm 0.05 "
Lock	No. of locks: 4
Base material	Stainless steel 1.4301 (AISI 304)
Packaging unit	1 pc(s).
Net weight	2.15 kg
Gross weight	2.28 kg
Customs tariff number	84879090

# Features

---

ETIM 9	EC000261
ETIM 8	EC000261
ECLASS 8.0	27180101
Product description	KL Terminal box, WHD: 300x200x80 mm, Stainless steel 1.4301, without mounting plate, with cover, without gland plate

# Approvals

---

Approvals	Bureau Veritas DNV-GL Lloyds Register of Shipping UL + C-UL (listed)
Explanations	Declaration of conformity Declaration of conformity UK