

# Rittal – The System.

Faster – better – everywhere.



## KX 1529.000

## KX terminal box, carbon steel, without flange

State: 8/24/2025 (Source: [rittal.com/us-en](https://www.rittal.com/us-en))

ENCLOSURES

POWER DISTRIBUTION

CLIMATE CONTROL

IT INFRASTRUCTURE

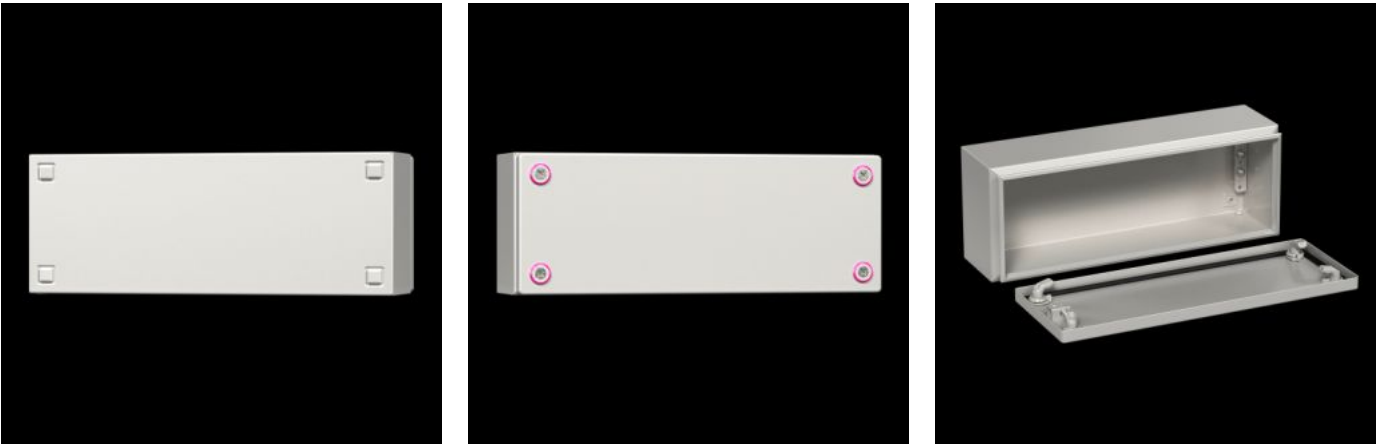
SOFTWARE & SERVICES

FRIEDHELM LOH GROUP



# KX 1529.000 - KX terminal box, carbon steel, without flange

The small enclosure KX, terminal box KX, without a gland plate allows for flexible interior installation while maintaining a high protection category.



## Features

Model No.	KX 1529.000
Product description	The small enclosure KX, terminal box KX, without a gland plate allows for flexible interior installation while maintaining a high protection category.
Material	Housing: Carbon steel Cover: Carbon steel, all-round foamed-in PU seal
Surface finish	Housing and cover: Dipcoat primed, powder-coated on the outside, textured paint
Color	RAL 7035
Supply includes	Housing with cover Mini cam lock
Protection category NEMA	NEMA 1 NEMA 3R NEMA 4 NEMA 12
Protection category IP to EN 60529	IP 66

# Features

Type rating according to UL 50E	Type 1 Type 3R Type 4 Type 12
IK code	IK08
Dimensions	Width: 200 mm Height: 150 mm Depth: 120 mm Width: 7.87 " Height: 5.91 " Depth: 4.72 "
Material thickness - cover	1.25 mm 0.05 "
Material thickness - enclosure	1.25 mm 0.05 "
Base material	Carbon steel
Packaging unit	1 pc(s).
Net weight	1.6
Gross weight	1.704
PCF/VE (cradle-to-gate)	9.4 kg CO2 eq (Cat B)
Information regarding the PCF class	Category B: PCF value (cradle-to-gate) calculated approximately on the basis of the product weight and self-declared
Customs tariff number	84879090
EAN	4028177816350
E-Number Sweden	E3465201
ETIM 9	EC000261
ETIM 8	EC000261
ECLASS 8.0	27180101

# Approvals

Approvals	Bureau Veritas DNV-GL Lloyds Register of Shipping UL + C-UL (listed)
Certificates	Protection category
Explanations	Manufacturer's declaration Declaration of conformity Declaration of conformity UK PCF-declaration