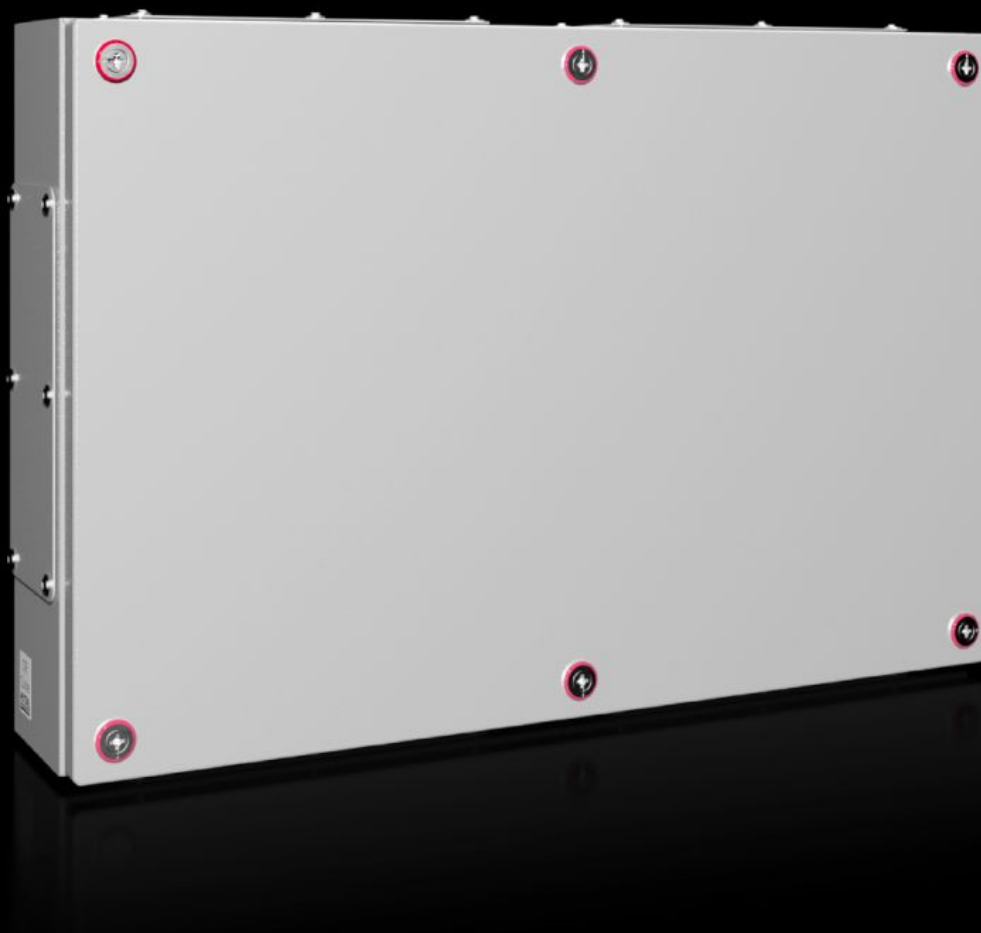


Rittal – The System.

Faster – better – everywhere.



KX 1540.000

KX terminal box, carbon steel with flange

State: 7/5/2025 (Source: rittal.com/us-en)

ENCLOSURES

POWER DISTRIBUTION

CLIMATE CONTROL

IT INFRASTRUCTURE

SOFTWARE & SERVICES

FRIEDHELM LOH GROUP



KX 1540.000 - KX terminal box, carbon steel with flange

The small enclosure KX, terminal box KX, with a gland plate allows for flexible interior installation and simple cable entry with optimum use of space.



Features

Model No.	KX 1540.000
Material	Housing: Carbon steel Cover: Carbon steel, all-round foamed-in PU seal
Surface finish	Housing and cover: Dipcoat primed, powder-coated on the outside, textured paint
Color	RAL 7035
Supply includes	Housing with cover Mini-fasteners Carbon steel flange plates with seals and assembly components
Protection category NEMA	NEMA 1 NEMA 12
Protection category IP to EN 60529	IP 55
Type rating according to UL 50E	Type 1 Type 12
IK code	IK08

Features

Dimensions	Width: 600 mm Height: 400 mm Depth: 120 mm Width: 23.6 " Height: 15.7 " Depth: 4.72 "
Material thickness - cover	1.25 mm 0.05 "
Material thickness - enclosure	1.25 mm 0.05 "
Flange Plates	: 1 + 1 : 2 + 2
Base material	Carbon steel
Packaging unit	1 pc(s).
Net weight	8.444
Gross weight	8.7
PCF per pack (cradle-to-gate)	35.4 kg CO2 eq (Cat B)
Note on PCF category	Category B: PCF value (cradle-to-gate) based on the product weight, approximately calculated and self-declared
Customs tariff number	84879090
EAN	4028177816459
E-Number Sweden	E3465211
ETIM 9	EC000261
ETIM 8	EC000261
ECLASS 8.0	27180101

Approvals

Approvals

Approvals

Bureau Veritas
DNV-GL
Lloyds Register of Shipping
UL + C-UL (listed)

Certificates

Protection category

Explanations

Declaration of conformity
Declaration of conformity UK
PCF-declaration