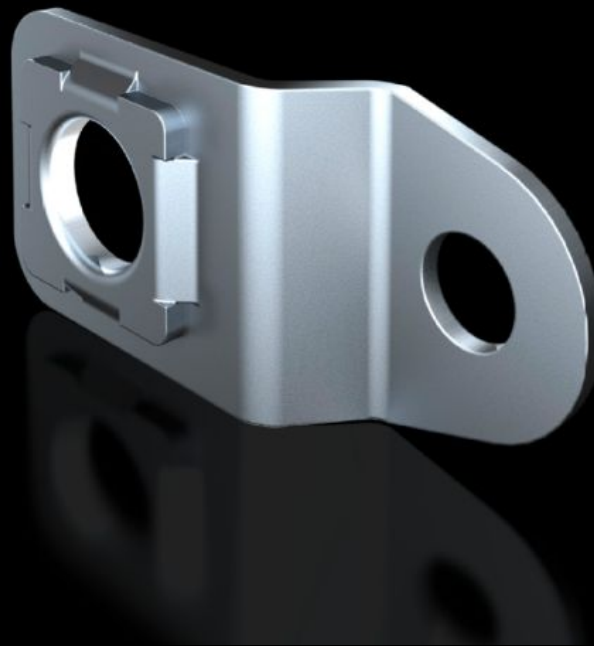


# Rittal – The System.

Faster – better – everywhere.



## SZ 1590.010

# Wall mounting bracket

State: 4/22/2026 (Source: [rittal.com/us-en](http://rittal.com/us-en))

ENCLOSURES

POWER DISTRIBUTION

CLIMATE CONTROL

IT INFRASTRUCTURE

SOFTWARE & SERVICES

FRIEDHELM LOH GROUP



# SZ 1590.010 - Wall mounting bracket for AX carbon steel, KX carbon steel, AX IT EL

For mounting AX and KX carbon steel enclosures.

## Features

Model No.	SZ 1590.010
Product description	For mounting AX and KX carbon steel housings.
Benefits	Screw-fastened directly from the rear with a self-tapping screw into the enclosure eyelet
Material	Carbon steel, zinc-plated
Supply includes	Assembly components
Wall distance	10 mm 0.39 "
Suitable for	Enclosure type: AX carbon steel KX carbon steel AX wall-mounted housing, 3-part
Type rating according to UL 50E	Type 1 Type 3R Type 4 Type 12
Packaging unit	4 pc(s).
Net weight	0.132 kg
Gross weight	0.168 kg
PCF/VE (cradle-to-gate)	0.5 kg CO2 eq (Cat B)
Information regarding the PCF class	Category B: PCF value (cradle-to-gate) calculated approximately on the basis of the product weight and self-declared
Customs tariff number	83025000
ETIM 9	EC002625
ETIM 8	EC002625

# Features

---

ECLASS 8.0

27189234

---

Product description

SZ Wall mounting bracket, for AX and KX, sheet steel, wall distance:  
10 mm

# Approvals

---

Approvals

DNV-GL

UL + C-UL - FTTA