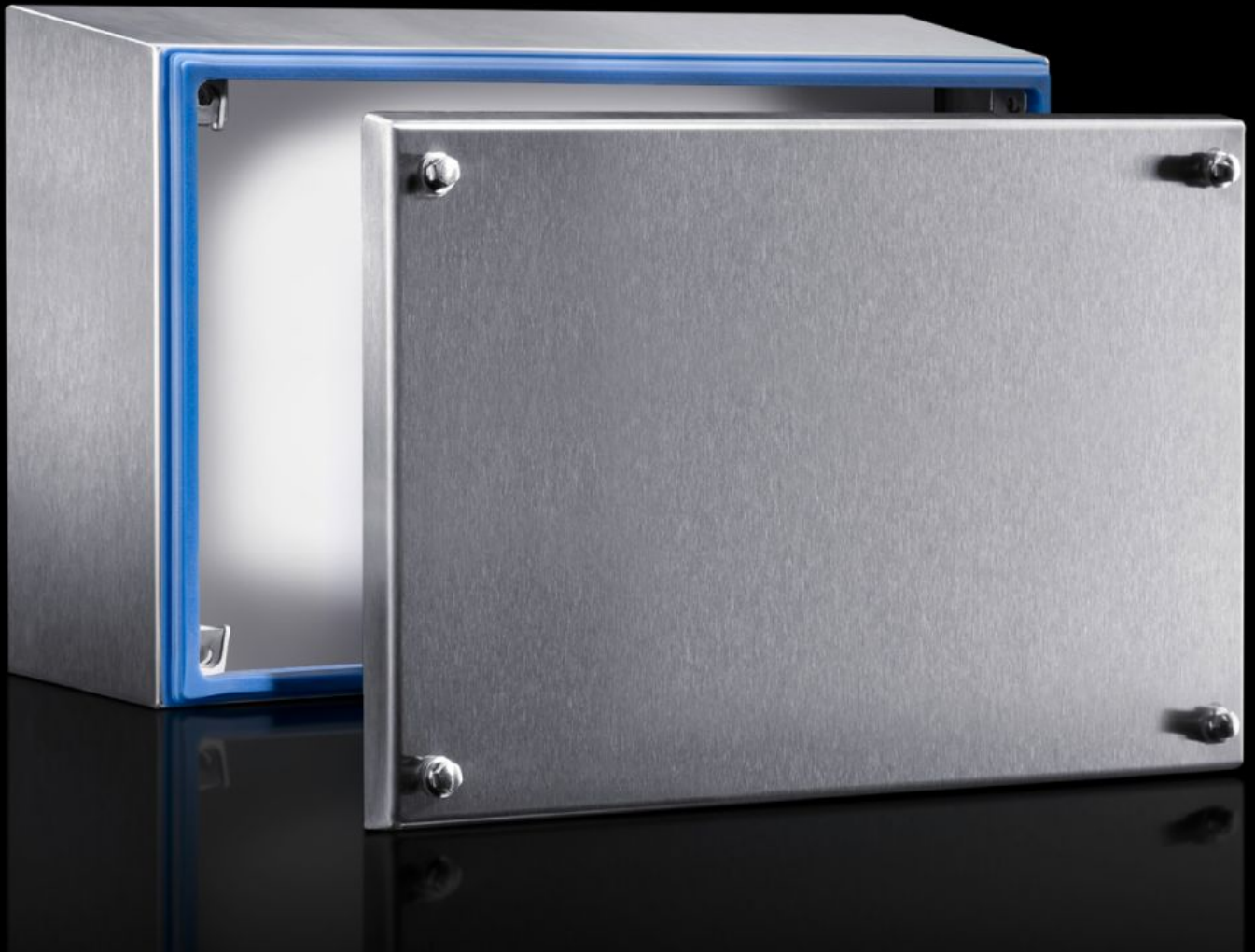


# Rittal – The System.

Faster – better – everywhere.



## HD 1674.600 Junction box HD

State: 6/19/2026 (Source: [rittal.com/us-en](http://rittal.com/us-en))

ENCLOSURES

POWER DISTRIBUTION

CLIMATE CONTROL

IT INFRASTRUCTURE

SOFTWARE & SERVICES

FRIEDHELM LOH GROUP



# HD 1674.600 - Junction box HD

Enclosure solution tailored to the requirements of the food and beverage industry. All-round gap-free silicone seal between enclosure and cover. Hygiene-compliant quick-release hexagon fastener



## Features

Model No.	HD 1674.600
Version	Hygienic Design Enclosures
Material	Housing and cover: Stainless steel 1.4301 (AISI 304), 1.5 mm Installation bracket: Carbon steel, zinc-plated, 2.0 mm Screw plug: Stainless steel Seal: Silicone, compliant with FDA Guideline 21 CFR 177.2600
Surface finish	Housing and cover: Brushed, grain 400, peak-to-valley height < 0.8 µm Seal: Blue, dyed (RAL 5010)
Supply includes	Housing of all-round solid construction Cover Installation bracket (pre-assembled) Seal and quick-release bolt (supplied loose)

# Features

---

Dimensions	Width front: 300 mm Width (rear): 327 mm Height, front: 200 mm Height rear: 227 mm Depth: 120 mm Width front: 11.8 " Width (rear): 12.9 " Height, front: 7.87 " Height rear: 8.94 " Depth: 4.72 "
------------	--

---

IK code	IK08
---------	------

---

Base material	Stainless steel 1.4301 (AISI 304)
---------------	-----------------------------------

---

Protection category IP to IEC 60529	IP 66 IP X9
-------------------------------------	----------------

---

Protection category NEMA	NEMA 1 NEMA 3 NEMA 3X NEMA 4 NEMA 4X NEMA 12 NEMA 13
--------------------------	--

---

Type rating according to UL 50E	Type 1 Type 3 Type 3X Type 4 Type 4X Type 12 Type 13
---------------------------------	--

---

Packaging unit	1 pc(s).
----------------	----------

---

Net weight	3.692 kg
------------	----------

---

Gross weight	3.8 kg
--------------	--------

---

PCF/VE (cradle-to-gate)	14.39
-------------------------	-------

---

Customs tariff number	84879090
-----------------------	----------

---

ETIM 9	EC002713
--------	----------

---

ETIM 8	EC002713
--------	----------

---

# Features

---

ECLASS 8.0	27180101
Product description	HD Terminal box, WHD: 300x200x120 mm, Stainless steel 1.4301, with cover and silicone seal

---

# Approvals

---

Approvals	UL + C-UL (listed)
Explanations	Declaration of conformity Declaration of conformity UK PCF-declaration

---