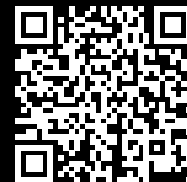


# Rittal – The System.

Faster – better – everywhere.



## DK 2094.400 Slot-in cable gland, 482.6 mm (19")

State: 12/21/2025 (Source: [rittal.com/us-en](http://rittal.com/us-en))

ENCLOSURES

POWER DISTRIBUTION

CLIMATE CONTROL

IT INFRASTRUCTURE

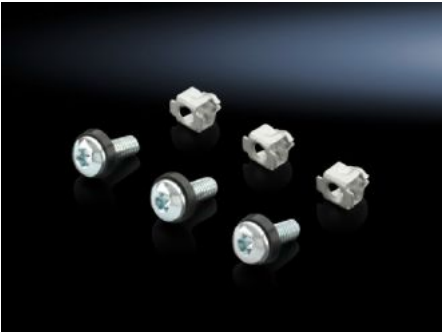
SOFTWARE & SERVICES

FRIEDHELM LOH GROUP



# DK 2094.400 - Slot-in cable gland, 482.6 mm (19")

Consist of an expanding nut which is inserted into the square hole at the front and then secured with the fastening screw.



## Features

Model No.	DK 2094.400
Version	Size of mounting hole 9.5 x 9.5 mm
Product description	The screw fastening consists of an expanding nut which is inserted into the square hole at the front only and then secured with the fastening screw. When the screw is tightened the captive nut expands in this way securing the elements. Holder tightening zone 1.2 – 4.5 mm. Multi-tooth screw head, bit size T 30.
Material	Carbon steel
Surface finish	Zinc-plated
Supply includes	Flat-head screw Expanding nuts Plastic washers
Dimensions	Thread: M6 Thread length: 16 mm Thread: M6 Thread length: 0.63 "

# Features

Packaging unit	50 pc(s).
Net weight	0.3
Gross weight	0.38
PCF/VE (cradle-to-gate)	1.3 kg CO2 eq (Cat B)
Information regarding the PCF class	Category B: PCF value (cradle-to-gate) calculated approximately on the basis of the product weight and self-declared
Customs tariff number	73181900
EAN	4028177488847
E-Number Sweden	E7239814
ETIM 9	EC002358
ETIM 8	EC002358
ECLASS 8.0	23110815