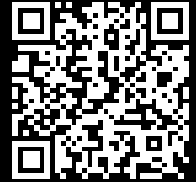


Rittal – The System.

Faster – better – everywhere.



AX 2261.540

AX wall-mounted housing, 3-part

State: 4/17/2026 (Source: rittal.com/us-en)

ENCLOSURES

POWER DISTRIBUTION

CLIMATE CONTROL

IT INFRASTRUCTURE

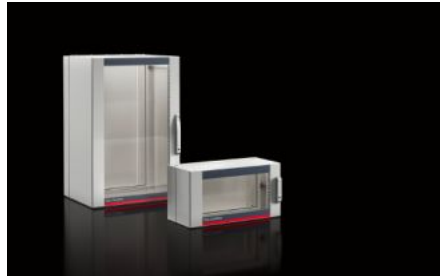
SOFTWARE & SERVICES

FRIEDHELM LOH GROUP



AX 2261.540 - AX wall-mounted housing, 3-part

The delivery concept of the three-part AX wall-mounted enclosure reduces complexity and increases flexibility. Thanks to the AX/VX modular system, the enclosures are suitable for various applications. The three-part structure ensures easy access.



Features

Model No.	AX 2261.540
Version	Wall-mounted housing IT
Material	Wall and hinged part: Carbon steel, 1.5 mm Viewing window: Single-pane safety glass, 3 mm
Surface finish	Powder-coated
Color	Wall and hinged part: RAL 7035 Viewing door: RAL 7035/7015 (slate gray)
Supply includes	Wall section: Flange (gland) plate, solid, top and bottom Hinged part with 25 mm pitch pattern in the front and rear frame, two 19" profile angles at the front, fixed in place Designer viewing door Center part lock: 3 mm double bit Lock design – glazed door: Security lock 3524 E Mini-comfort handle
Height units	15 U

Features

Dimensions	Width: 600 mm Height: 745 mm Depth: 473 mm Width: 23.6 " Height: 29.3 " Depth: 18.6 "
Installation depth	420 mm 16.5 "
Clearances	Clearance width: 502 mm Clearance height: 684 mm Clearance width: 19.8 " Clearance height: 26.9 "
Depth hinged part	316 mm 12.4 "
Depth of wall section	135 mm 5.31 "
No. of locks	1
Load capacity of hinged part (static)	750 N
Load capacity wall section (static)	250 N
Base material	Carbon steel
Lock	Lock version: Mini-comfort handle Lock Insert: Security lock insert no. 3524 E
Protection category IP to EN 60529	IP 54 in conjunction with solid gland plate top and bottom
Packaging unit	1 pc(s).
Net weight	36.75 kg
Gross weight	38.1 kg
Information regarding the PCF class	Category B: PCF value (cradle-to-gate) calculated approximately on the basis of the product weight and self-declared
Customs tariff number	94032080
ETIM 9	EC002500

Features

ETIM 8	EC002500
ECLASS 8.0	27180101
Product description	AX wall-mounted housing AX, 3-part, WHD: 600x745x473 mm, 15 HE, wall section: closed flange plate top and bottom, with mini comfort handle

Approvals

Explanations	Declaration of conformity
--------------	---------------------------