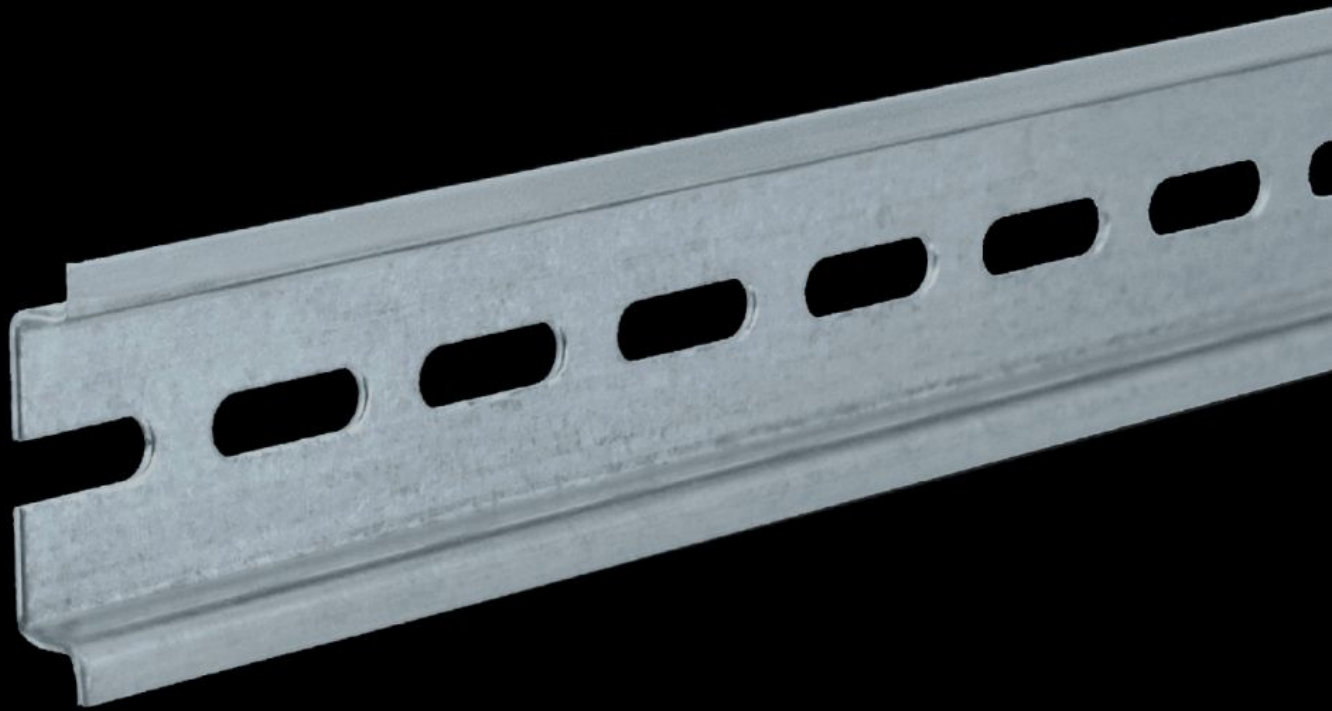


# Rittal – The System.

Faster – better – everywhere.



## SZ 2316.000

## Support rail TH 35/7.5

State: 6/12/2026 (Source: [rittal.com/us-en](http://rittal.com/us-en))

ENCLOSURES

POWER DISTRIBUTION

CLIMATE CONTROL

IT INFRASTRUCTURE

SOFTWARE & SERVICES

FRIEDHELM LOH GROUP



# SZ 2316.000 - Support rail TH 35/7.5 to EN 60 715

Length matched to the housing width.

## Features

Model No.	SZ 2316.000
Version	TH 35/7.5
Product description	Length matched to the housing width.
Material	Carbon steel
Surface finish	Zinc-plated
Length of support rail	287 mm
Suitable for	Enclosure type: AX KX AE KL KL-HD Width: = 300 mm Enclosure type: AX KX AE KL KL-HD Width: = 11.8 "
Packaging unit	10 pc(s).
Net weight	0.9 kg
Gross weight	0.922 kg
PCF/VE (cradle-to-gate)	3.5 kg CO2 eq (Cat B)
Information regarding the PCF class	Category B: PCF value (cradle-to-gate) calculated approximately on the basis of the product weight and self-declared
Customs tariff number	73269098
ETIM 9	EC001285
ETIM 8	EC001285

# Features

---

ECLASS 8.0

27189234

---

Product description

SZ Support rail TH 35/7.5 acc. to EN 60 715, for W: 300 mm, L: 287 mm