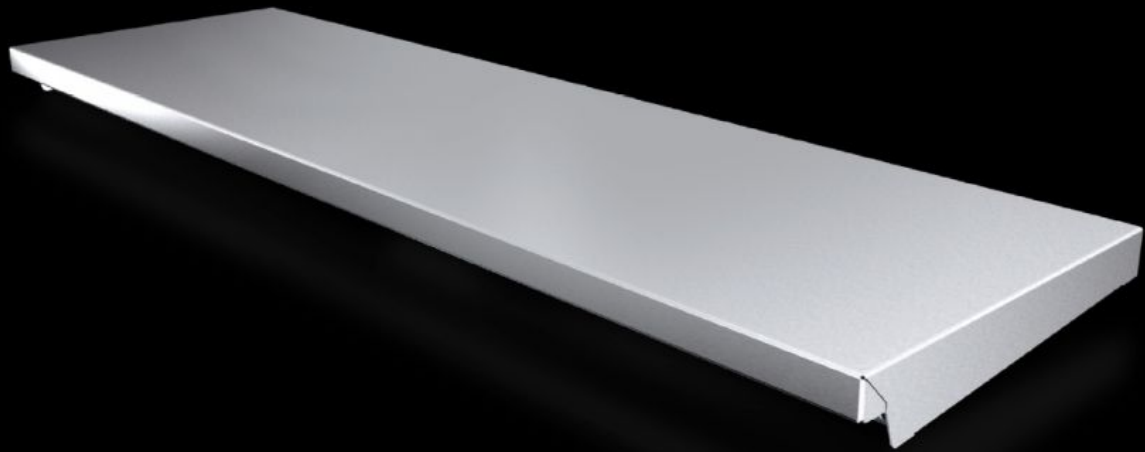


# Rittal – The System.

Faster – better – everywhere.



## AX 2363.010

# Canopy

State: 4/22/2026 (Source: [rittal.com/us-en](http://rittal.com/us-en))

ENCLOSURES

POWER DISTRIBUTION

CLIMATE CONTROL

IT INFRASTRUCTURE

SOFTWARE & SERVICES

FRIEDHELM LOH GROUP



# AX 2363.010 - Canopy for AX

The sloping protective roof reliably protects the enclosure from standing moisture and other dirt from above.



## Features

Model No.	AX 2363.010
Product description	The sloping protective roof reliably protects the enclosure from standing moisture and other dirt from above.
Material	Stainless steel 1.4301 (AISI 304)
Surface finish	Brushed, grain 240
Supply includes	Assembly components
Installation options	Can be screw-fastened for dynamic loads
Dimensions	Height: 43 mm Height: 1.69 "
Type rating according to UL 50E	Type 1 Type 3R Type 4 Type 4X Type 12

## Features

---

Suitable for	Enclosure type: AX Width: = 1,000 mm Depth: = 300 mm Enclosure type: AX Width: = 39.4 " Depth: = 11.8 "
Packaging unit	1 pc(s).
Net weight	4.4 kg
Gross weight	4.7 kg
Customs tariff number	94039910
ETIM 9	EC000744
ETIM 8	EC000744
ECLASS 8.0	27182405
Product description	AX Protective roof, for WD: 1000x300 mm, stainless steel

## Approvals

---

Approvals	UL + C-UL - FTTA
-----------	------------------