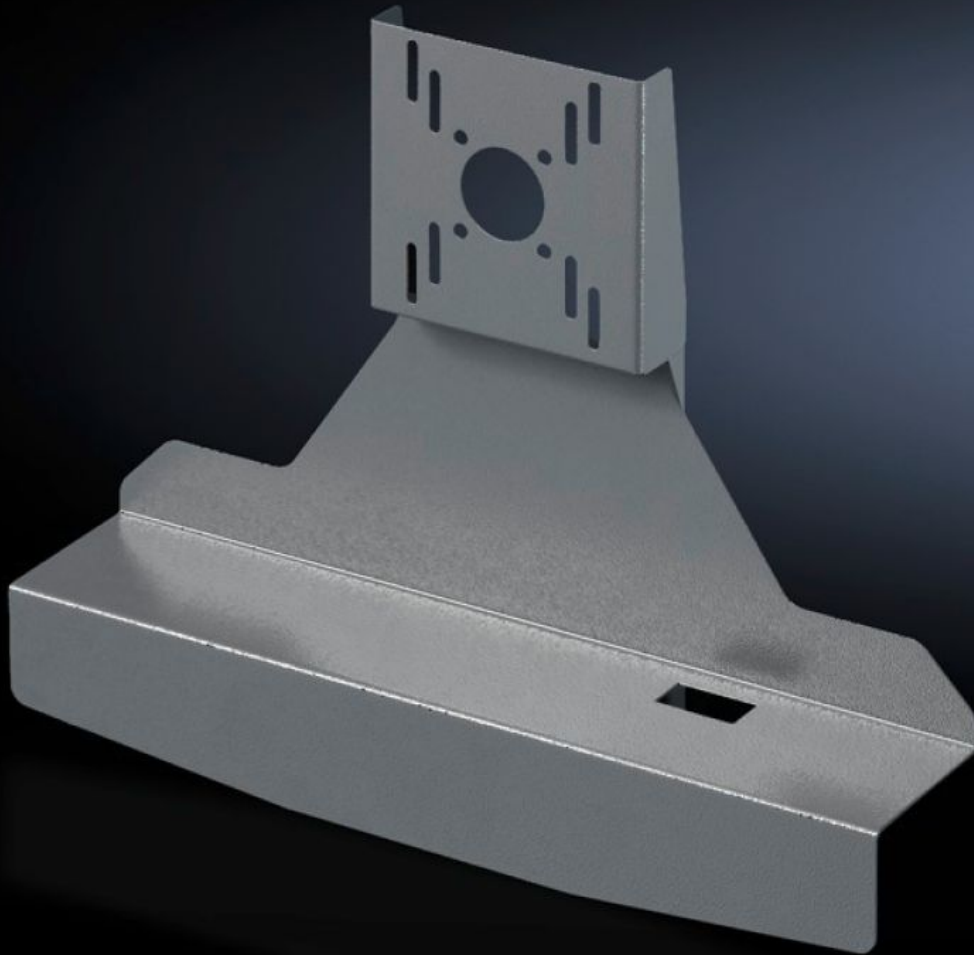


Rittal – The System.

Faster – better – everywhere.



SM 2383.030 TFT Holder

State: 4/19/2026 (Source: rittal.com/us-en)

ENCLOSURES

POWER DISTRIBUTION

CLIMATE CONTROL

IT INFRASTRUCTURE

SOFTWARE & SERVICES

FRIEDHELM LOH GROUP



SM 2383.030 - TFT Holder

Suitable for mounting TFTs on CP-S, CP-L housing attachments and vertical support arm via enclosure attachment, tilting.



Features

Model No.	SM 2383.030
Product description	Suitable for mounting TFTs with VESA 75/100. Adaptation up to 21" on attachment CP 40 (6501.070), attachment CP 60 for support arm connection 120 x 65 mm (6206.360), or vertical support arm via tilting adaptor +100°/-60° (6206.460).
Material	Carbon steel
Surface finish	Spray-finished
Color	RAL 7024
Dimensions	Width: 477 mm Height: 372 mm Depth: 110.5 mm Width: 18.8 " Height: 14.6 " Depth: 4.35 "
Packaging unit	1 pc(s).
Net weight	3.033 kg

Features

Gross weight	3.233 kg
PCF/VE (cradle-to-gate)	12.2 kg CO2 eq (Cat B)
Information regarding the PCF class	Category B: PCF value (cradle-to-gate) calculated approximately on the basis of the product weight and self-declared
Customs tariff number	83024900
ETIM 9	EC002620
ETIM 8	EC002620
ECLASS 8.0	27189261
Product description	SM TFT holder, for TFTs up to 21", WHD: 477x372x110.5 mm