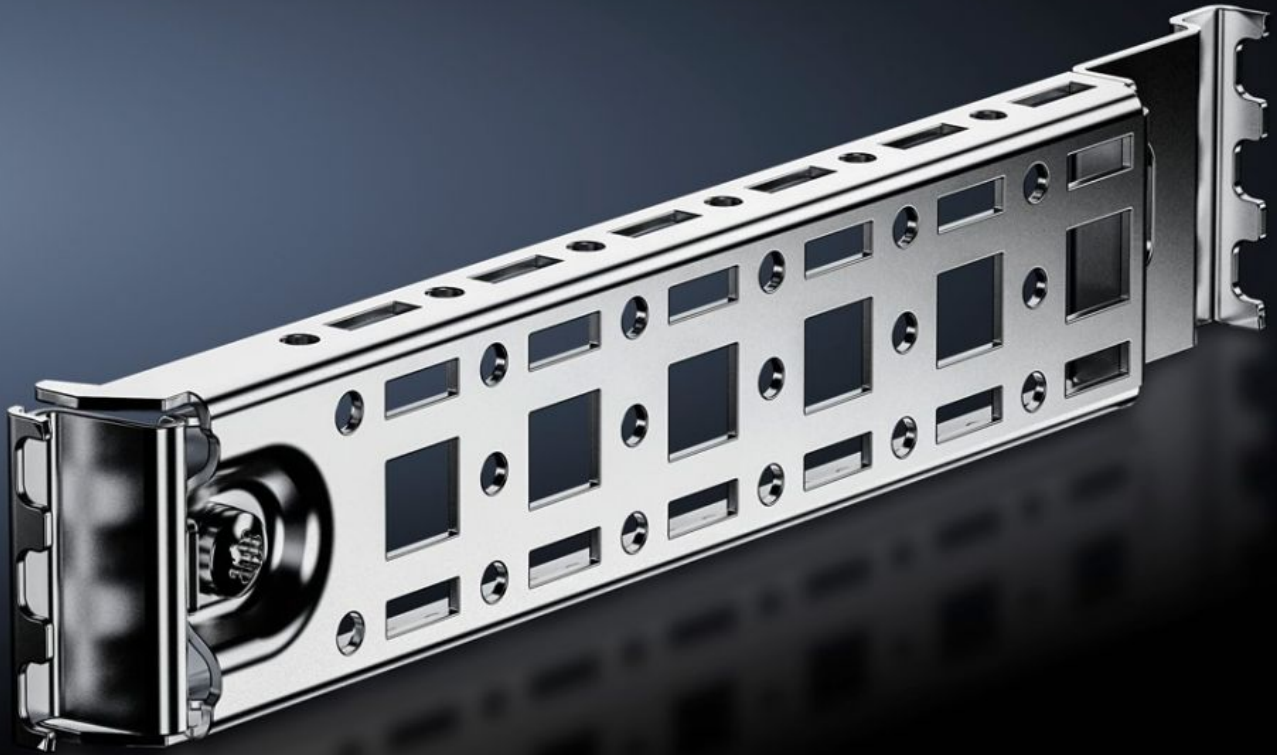


Rittal – The System.

Faster – better – everywhere.



AX 2393.350

Rail for Interior Installation AX

State: 5/10/2026 (Source: rittal.com/us-en)

ENCLOSURES

POWER DISTRIBUTION

CLIMATE CONTROL

IT INFRASTRUCTURE

SOFTWARE & SERVICES

FRIEDHELM LOH GROUP



AX 2393.350 - Rail for Interior Installation AX

For mounting in the enclosure, no machining required. Suitable for mounting on the side, base and roof up to a load of 25 N using the locators integrated into the enclosure.

Features

Model No.	AX 2393.350
Product description	For mounting in the enclosure, no machining required. Suitable for mounting on the side, base and roof up to a load of 25 N using the locators integrated into the enclosure. Variable with two rows of system holes, creates additional mounting surface for e.g.: System chassis 14 x 39 mm, enclosure lights, door-operated switch, door stay, cable conduit holder.
Benefits	Only one screw needed to secure the rail in the housing Incl. adapter for door-operated switch Compatibility with VX25 system accessories Housing protection category is retained (no machining required) Automatic potential equalization Can also be retrofitted with built-in mounting plate. Installation using flange (gland) plates possible
Material	Carbon steel
Surface finish	Zinc-plated
Mounting tip	For installing LED system light, only in conjunction with mounting bracket for interior installation
Suitable for	Enclosure type: AX Depth: = 350 mm Enclosure type: AX Depth: = 13.8 "
Packaging unit	4 pc(s).
Net weight	0.864 kg
Gross weight	0.905 kg
Customs tariff number	73269098
ECLASS 8.0	27189234

Features

Product description

AX Rail for interior installation, for D: 350 mm