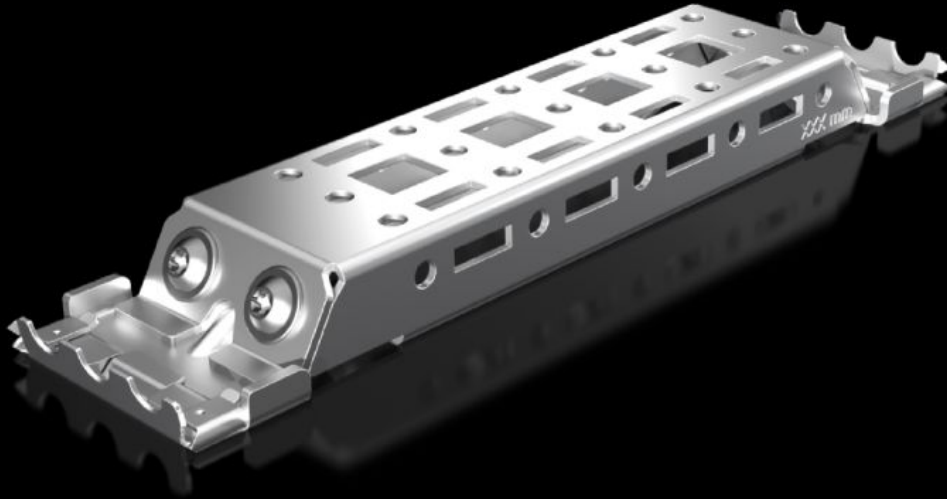


# Rittal – The System.

Faster – better – everywhere.



## AX 2394.210

## Rail for Interior Installation AX

State: 5/23/2026 (Source: [rittal.com/us-en](http://rittal.com/us-en))

ENCLOSURES

POWER DISTRIBUTION

CLIMATE CONTROL

IT INFRASTRUCTURE

SOFTWARE & SERVICES

FRIEDHELM LOH GROUP



# AX 2394.210 - Rail for Interior Installation AX

For mounting in the enclosure, no machining required. Suitable for mounting on the side and roof areas. Creates additional mounting space e.g. for VX system chassis with mounting flange 23 x 64 mm, VX system chassis with mounting flange 14 x 39 mm, enclosure lights, door-operated switch, door stay, VX cable clamp rails and support rails.



## Features

Model No.	AX 2394.210
Product description	For mounting in the enclosure, no machining required. Suitable for mounting on the side, base and roof using the locators integrated into the enclosure. Variable with 2 rows of system punchings, provides additional mounting space for: System chassis 14 x 39 mm, enclosure lights, door-operated switch, door stay, cable conduit holder.
Benefits	Modular system for AX Compatibility with VX25 system accessories Installation without drilling saves time Housing protection category is retained (no machining required) Automatic potential equalization Increased load capacity and stability
Material	Carbon steel
Surface finish	Zinc-plated
Supply includes	Rail for Interior Installation AX Adaptor Assembly components
Note	For installing the LED system light, either VX system chassis with mounting flanges 23 x 64 mm or mounting bracket for interior installation will be required

# Features

---

Suitable for	Enclosure type: AX Depth: = 210 mm Enclosure type: AX Depth: = 8.27 "
Packaging unit	4 pc(s).
Net weight	0.8 kg
Gross weight	0.9 kg
Customs tariff number	73269098
ETIM 9	EC002620
ETIM 8	EC002620
ECLASS 8.0	27189234
Product description	AX rail for interior installation, for D: 210 mm

---