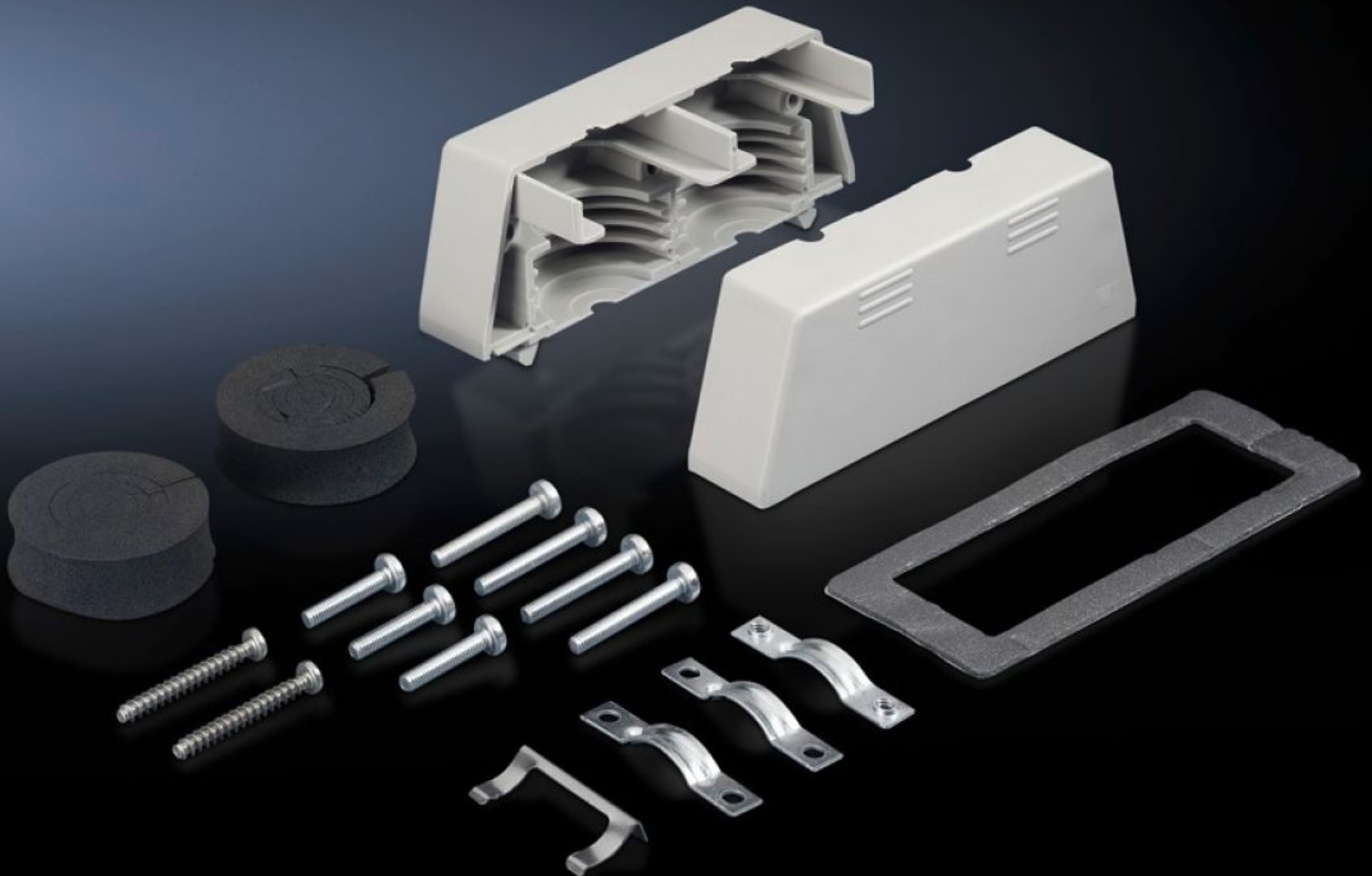


# Rittal – The System.

Faster – better – everywhere.



## SZ 2400.000 Connector gland

State: 4/4/2026 (Source: [rittal.com/us-en](http://rittal.com/us-en))

ENCLOSURES

POWER DISTRIBUTION

CLIMATE CONTROL

IT INFRASTRUCTURE

SOFTWARE & SERVICES

FRIEDHELM LOH GROUP



# SZ 2400.000 - Connector gland for connector cut-outs (24-pole)

For the entry of 2 pre-assembled cables in the connector cut-out, without dismantling the connector.

## Features

Model No.	SZ 2400.000
Product description	For the entry of 2 pre-assembled cables in the connector cut-out, without dismantling the connector.
Material	Housing: Plastic Clamps: Carbon steel
Surface finish	Clamps: Zinc-plated
Supply includes	2 half-shells Mounting clamp Assembly components
Dimensions	Width: 142 mm Height: 50 mm Depth: 54 mm Width: 5.59 " Height: 1.97 " Depth: 2.13 "
For cable diameters	8 - 36 mm 0.31 - 1.42 "
Packaging unit	1 pc(s).
Net weight	0.27 kg
Gross weight	0.291 kg
PCF/VE (cradle-to-gate)	1.1 kg CO2 eq (Cat B)
Information regarding the PCF class	Category B: PCF value (cradle-to-gate) calculated approximately on the basis of the product weight and self-declared
Customs tariff number	39269097

# Features

---

ETIM 9	EC000211
ETIM 8	EC000211
ECLASS 8.0	27142421
Product description	SZ Connector gland, for connector pads (24-pole), for cables ø 8-36 mm

---