

Rittal – The System.

Faster – better – everywhere.



SZ 2482.410 Socket module

State: 5/23/2026 (Source: rittal.com/us-en)

ENCLOSURES

POWER DISTRIBUTION

CLIMATE CONTROL

IT INFRASTRUCTURE

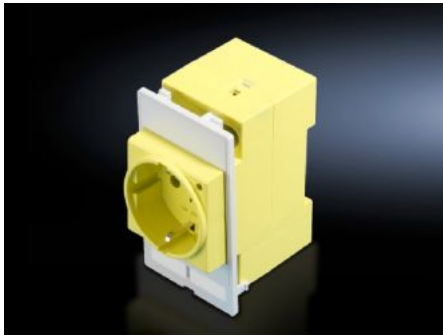
SOFTWARE & SERVICES

FRIEDHELM LOH GROUP



SZ 2482.410 - Socket module for mounting frame, modular interface flap

Power outlet module for installation in a mounting frame.



Features

Model No.	SZ 2482.410
Version	Socket modules Germany (VDE), screw terminals max. 6 mm ² , connection at rear, color: yellow (RAL 1016), for installation in front of main switch
Product description	Power outlet module for installation in a mounting frame.
Function principle	Can be used in a single or double mounting frame.
Material	Plastic, PBTP, basic material to UL 94-V0
Color	Yellow
Packaging unit	1 pc(s).
Net weight	0.139 kg
Gross weight	0.15 kg
Customs tariff number	85366990
ETIM 9	EC002625
ETIM 8	EC002625
ECLASS 8.0	27189234
Product description	SZ Interface flap, modular, socket modules, Germany, with screw terminals, Colour: Yellow

Approvals

Explanations

Declaration of conformity