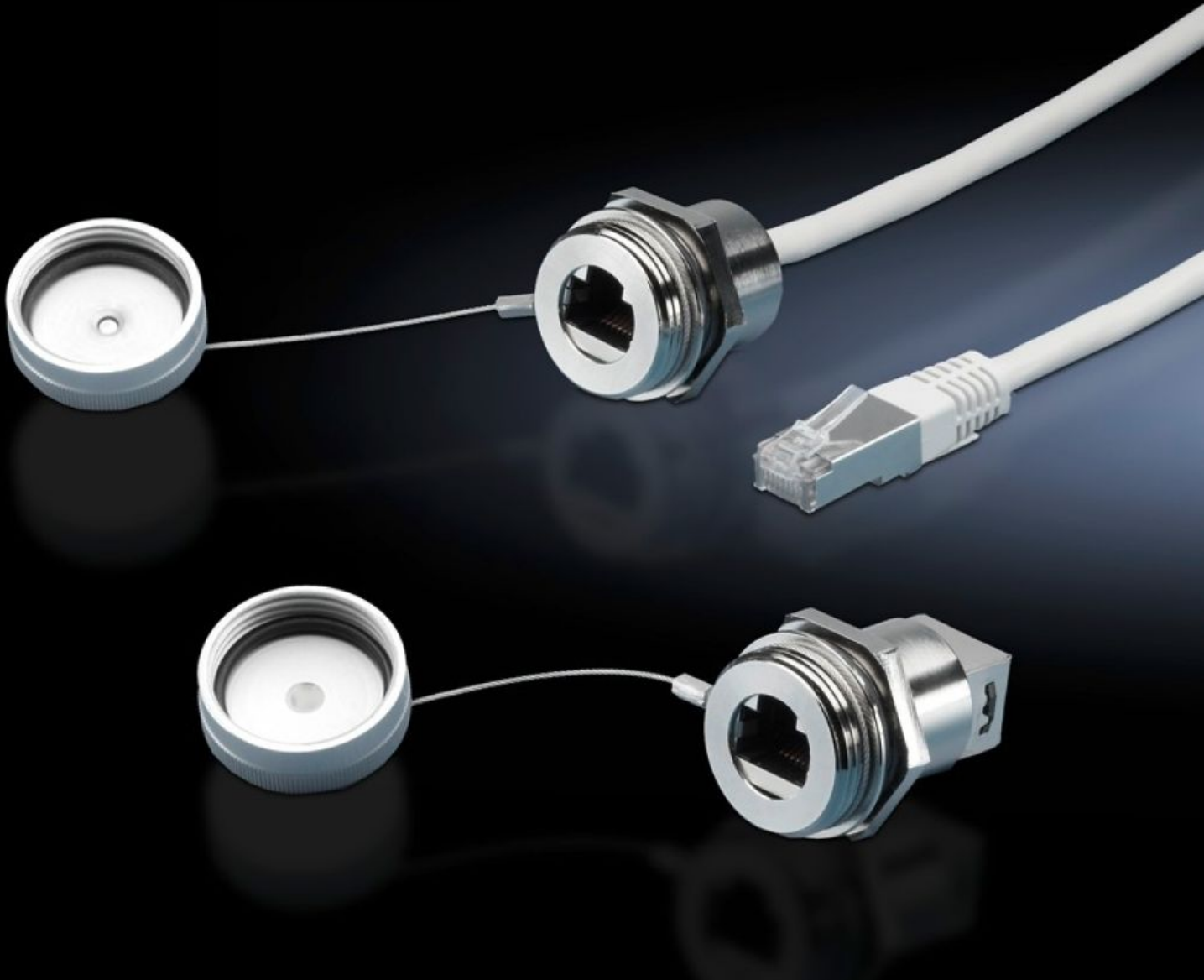


# Rittal – The System.

Faster – better – everywhere.



## SZ 2482.700

# Interface extension with wall connection

State: 4/22/2026 (Source: [rittal.com/us-en](http://rittal.com/us-en))

ENCLOSURES

POWER DISTRIBUTION

CLIMATE CONTROL

IT INFRASTRUCTURE

SOFTWARE & SERVICES

FRIEDHELM LOH GROUP



# SZ 2482.700 - Interface extension with wall connection

To extend the internal housing interfaces – e.g. from industrial PCs and switches – to the outside of the enclosure.

## Features

Model No.	SZ 2482.700
Version	RJ45 wall-mounted jack on internal connector
Product description	To extend the internal housing interfaces, e.g., from industrial PCs and switches to the outside of the enclosure. The wall connection only takes up as much space as a switch.
Benefits	Rapid access for maintenance work The protection category of the enclosure is preserved The lock nut cuts automatically into the spray-finish, thereby creating a conductive connection Captive protective cap
Material	Housing: Brass Cover: Aluminum Seal: Polyamide
Surface finish	Housing: Nickel-plated Cover: Natural anodized
Length	0.5 m 19.7 "
Dimensions	Length: 0.5 m Length: 19.7 "
For wall thickness (max.)	1 - 6 mm 0.04 - 0.24 "
Protection category IP to IEC 60529	IP67 with cover closed
Packaging unit	1 pc(s).
Net weight	0.07 kg
Gross weight	0.077 kg

# Features

---

Customs tariff number	85444290
ETIM 9	EC001408
ETIM 8	EC001408
ECLASS 8.0	19059205
Product description	SZ Interface extension, with wallconnection, RJ 45, L: 500 mm

---