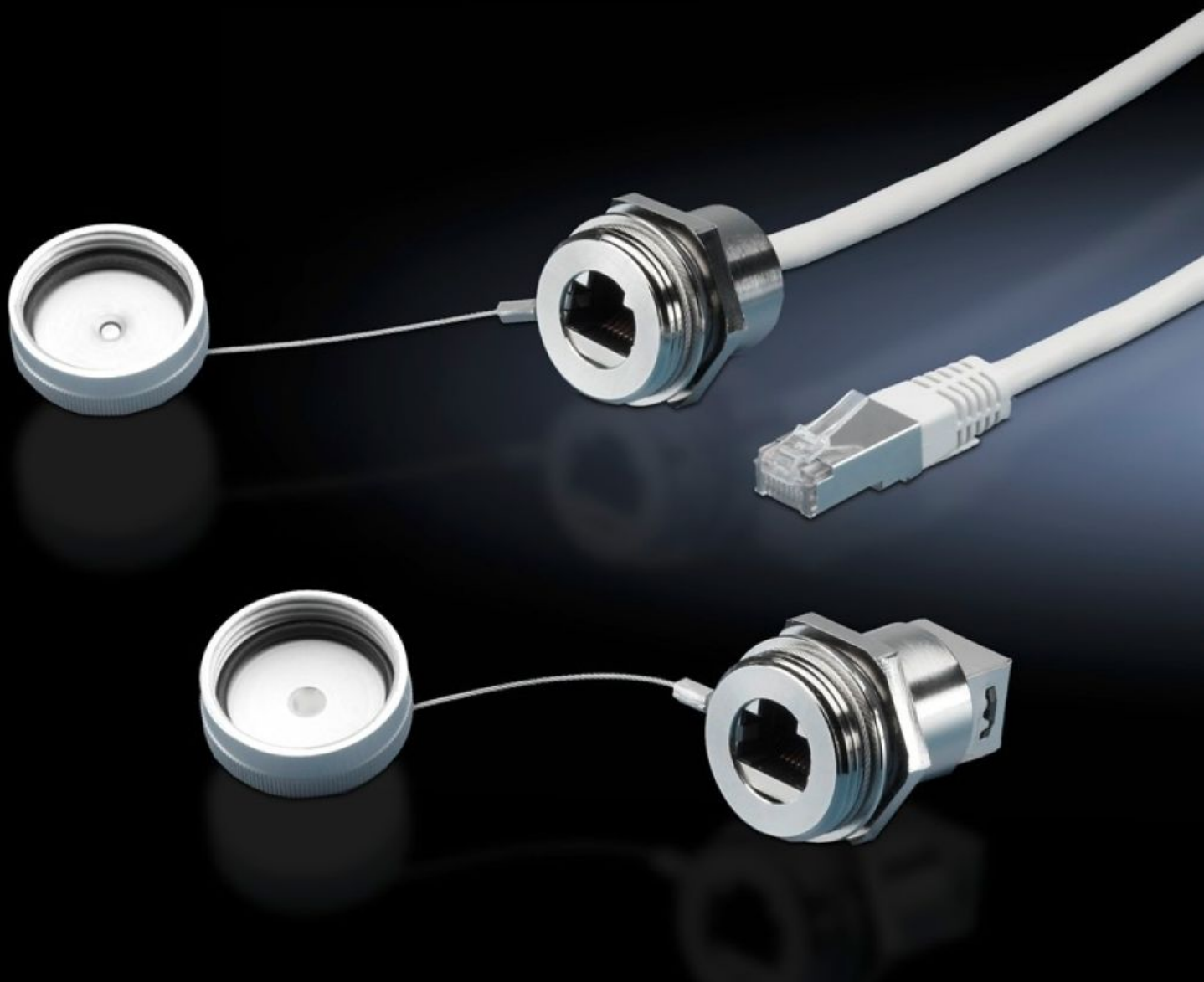


Rittal – The System.

Faster – better – everywhere.



SZ 2482.710

Interface extension with wall connection

State: 7/14/2025 (Source: rittal.com/us-en)

ENCLOSURES

POWER DISTRIBUTION

CLIMATE CONTROL

IT INFRASTRUCTURE

SOFTWARE & SERVICES

FRIEDHELM LOH GROUP



SZ 2482.710 - Interface extension with wall connection

To extend the internal housing interfaces – e.g. from industrial PCs and switches – to the outside of the enclosure.

Features

| | |
|-------------------------------------|---|
| Model No. | SZ 2482.710 |
| Version | RJ45 wall-mounted jack on internal connector |
| Product description | To extend the internal housing interfaces, e.g., from industrial PCs and switches to the outside of the enclosure. The wall connection only takes up as much space as a switch. |
| Benefits | Rapid access for maintenance work The protection category of the enclosure is preserved The lock nut cuts automatically into the spray-finish, thereby creating a conductive connection Captive protective cap |
| Material | Housing: Brass Cover: Aluminum Seal: Polyamide |
| Surface finish | Housing: Nickel-plated Cover: Natural anodized |
| Length | 1 m 39.4 " |
| Dimensions | Length: 1 m Length: 39.4 " |
| For wall thickness (max.) | 1 - 6 mm 0.04 - 0.24 " |
| Protection category IP to IEC 60529 | IP67 with cover closed |
| Packaging unit | 1 pc(s). |
| Net weight | 0.079 |
| Gross weight | 0.096 |

Features

| | |
|-----------------------|---------------|
| Customs tariff number | 85444290 |
| EAN | 4028177550223 |
| ETIM 9 | EC001408 |
| ETIM 8 | EC001408 |
| ECLASS 8.0 | 19059205 |