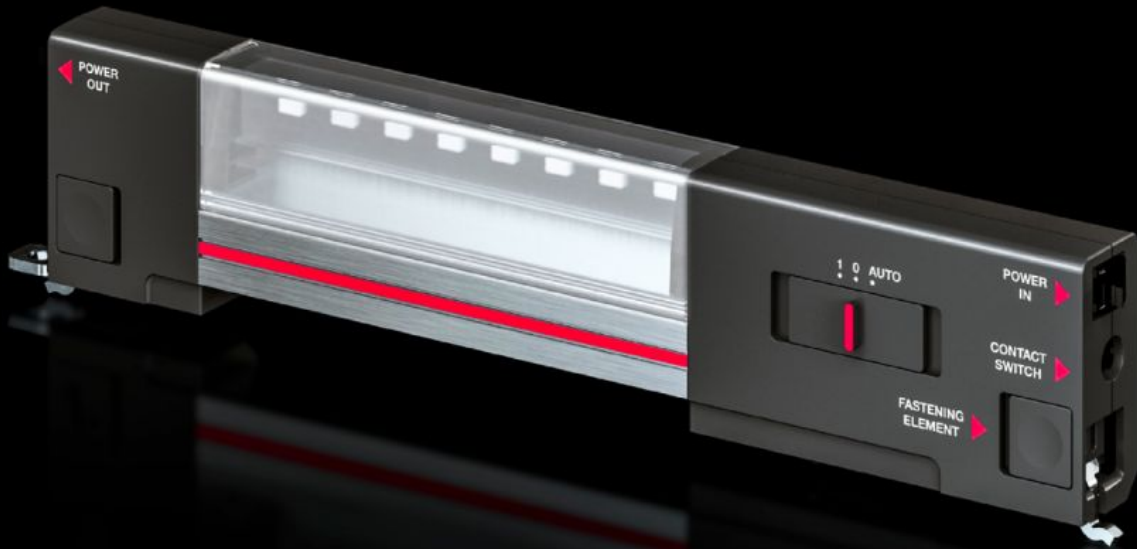


Rittal – The System.

Faster – better – everywhere.



SZ 2500.100 LED system light

State: 4/25/2026 (Source: rittal.com/us-en)

ENCLOSURES

POWER DISTRIBUTION

CLIMATE CONTROL

IT INFRASTRUCTURE

SOFTWARE & SERVICES

FRIEDHELM LOH GROUP



SZ 2500.100 - LED system light

LED system light - the first light designed especially for enclosures! Advanced LED technology provides even more light into the last recess.



Features

Model No.	SZ 2500.100
Version	without socket
Benefits	Optimum illumination of the entire enclosure Option of clip-on, screw or magnetic attachment A configuration to suit every application
Version	without socket
Material	Light body: Extruded aluminum Light cover: polycarbonate Light ends: PC-ABS
Color	Enclosure: RAL 7016
Supply includes	Assembly screws
Rated power	5 W
Connection options	Power Supply, 2-pole Through-wiring, 2-pole Door-operated switch
Protection category	II (total insulation)

Features

Light – installation type	Screw fastening Clip fastening Magnetic fastener (accessories)
Installation options	The internal mounting rail AX and the mounting bracket are required when installing in compact enclosures
Luminous flux	400 lm
Light color	4000 K (neutral white)
Note	Connection accessories should be ordered separately
Dimensions	Width: 262 mm Height: 55 mm Depth: 23 mm Width: 10.3 " Height: 2.17 " Depth: 0.91 "
Operating temperature range	-20 °C...55 °C -4 °F...131 °F
Rated operating voltage	100 V - 230 V, 1~, 50 Hz/60 Hz
Protection category IP to IEC 60529	IP 20
Packaging unit	1 pc(s).
Net weight	0.213 kg
Gross weight	0.28 kg
Customs tariff number	94054990
ETIM 9	EC000321
ETIM 8	EC000321
ECLASS 8.0	27189241
Product description	SZ LED system light, 400 Lumen, L: 262 mm, 100-230 V

Approvals

Approvals

Approvals

ENEC

Explanations

Declaration of conformity

Declaration of conformity UK

PCF-declaration