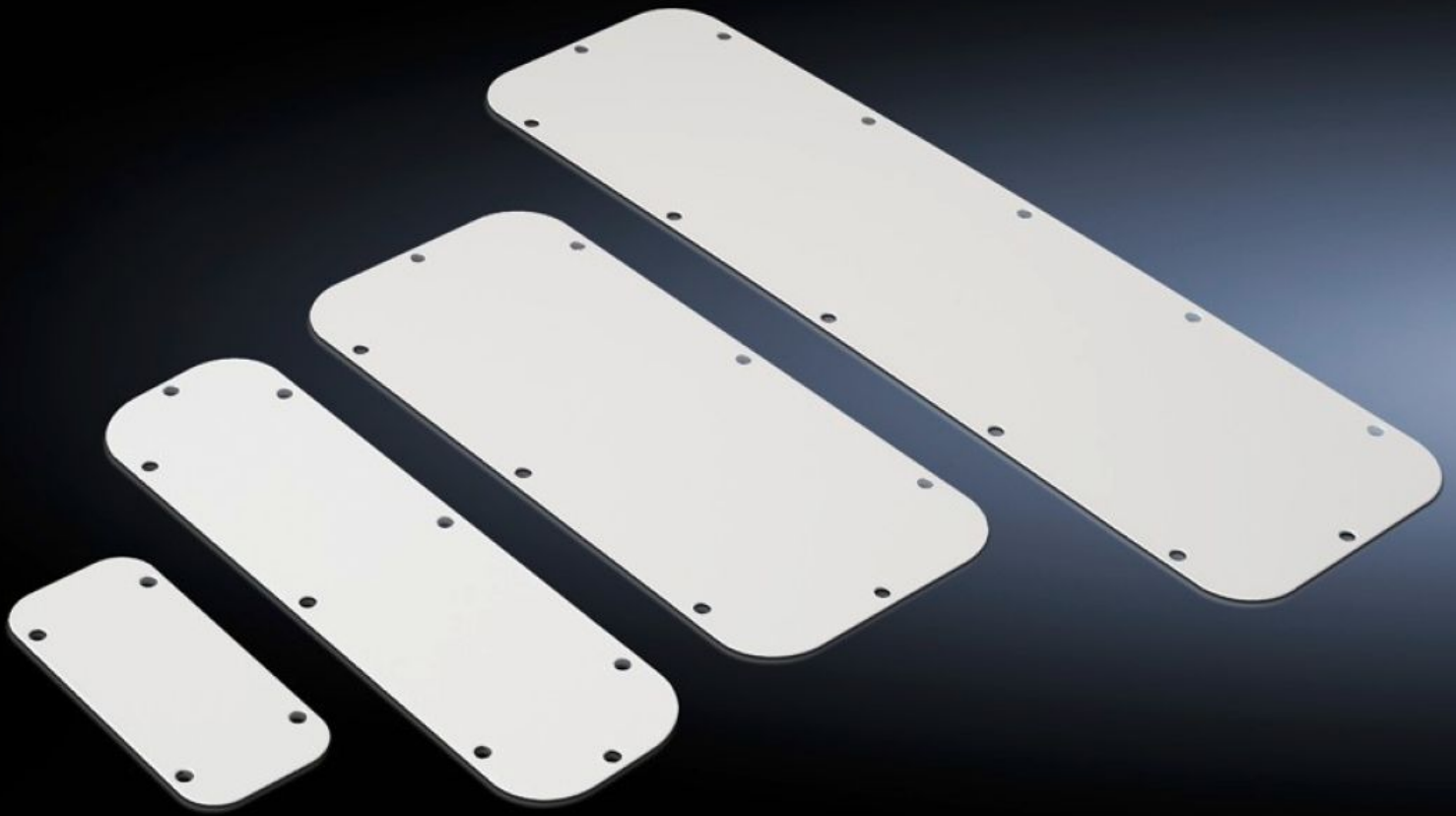


# Rittal – The System.

Faster – better – everywhere.



## SZ 2560.400 Metal gland plate

State: 5/4/2025 (Source: [rittal.com/us-en](http://rittal.com/us-en))

ENCLOSURES

POWER DISTRIBUTION

CLIMATE CONTROL

IT INFRASTRUCTURE

SOFTWARE & SERVICES

FRIEDHELM LOH GROUP



# SZ 2560.400 - Metal gland plate

As a spare/replacement part for flange plates supplied loose as standard, protection category IP 66 when mounting in the usual position at the bottom.

## Features

Model No.	SZ 2560.400
Version	Solid
Product description	As a spare/replacement part for flange plates supplied loose as standard.
Material	Carbon steel
Color	RAL 7035
Note	The assignment of the flange plate size can be found on the respective housings
Dimensions	Width: 160 mm Depth: 70 mm Width: 6.3 " Depth: 2.76 "
Suitable for	Enclosure type: AE
Gland plate	Size: 1
Protection category IP to EN 60 529	IP66 when mounting in the usual position at the bottom
Packaging unit	1 pc(s).
Net weight	0.119
Gross weight	0.128
Customs tariff number	73269098
EAN	4028177510142
ETIM 9	EC000211
ETIM 8	EC000211
ECLASS 8.0	27142421