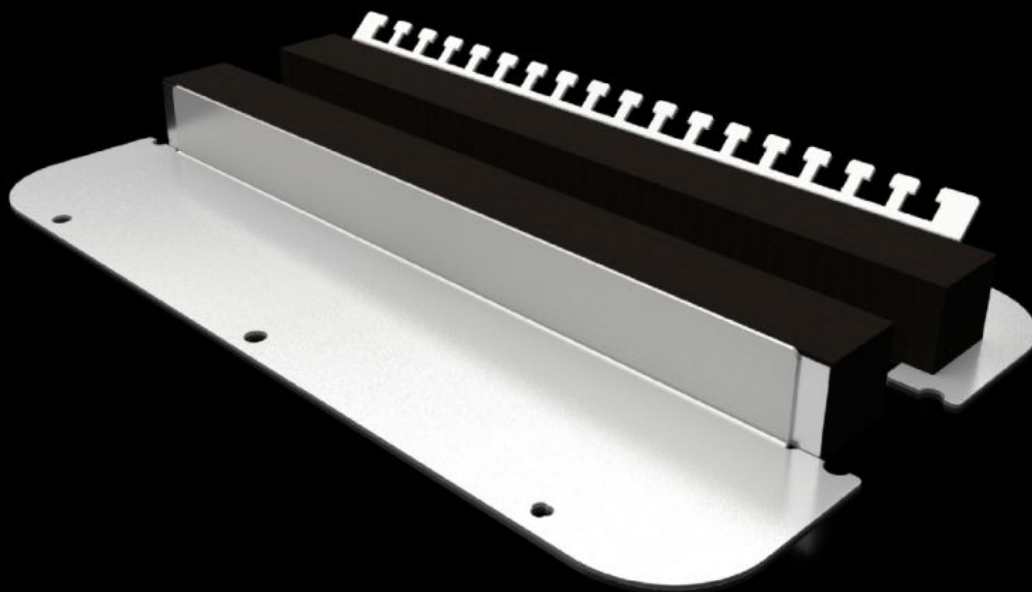


# Rittal – The System.

Faster – better – everywhere.



## SZ 2562.450

# Flange plate in two parts with elastic clamping profile

State: 5/23/2026 (Source: [rittal.com/us-en](http://rittal.com/us-en))

ENCLOSURES

POWER DISTRIBUTION

CLIMATE CONTROL

IT INFRASTRUCTURE

SOFTWARE & SERVICES

FRIEDHELM LOH GROUP



# SZ 2562.450 - Flange plate in two parts with elastic clamping profile for AX

The split flange plate allows easy mounting on the housing and offers various installation options. For easy insertion of cables with or without plug connections into the housing. The special holes in the flange plate ensure automatic equipotential bonding when screwed together. Bolts, clamps or grounding cables are no longer necessary.

## Features

Model No.	SZ 2562.450
Version	Two-piece
Material	Carbon steel
Color	RAL 7035
Supply includes	Assembly components
Note	The assignment of the flange plate size can be found on the respective housings When installing in enclosure width >760 mm, 2 PUs are required
Dimensions	Width: 339 mm Depth: 149 mm Width: 13.3 " Depth: 5.87 "
Suitable for	Enclosure type: AX
Suitable for Model No.	1031000 1038000 1045000 1077000 1094000 1380000
Gland plate	Size: 2
Packaging unit	1 pc(s).
Net weight	0.596 kg
Gross weight	0.796 kg

# Features

---

Customs tariff number	73269098
ETIM 8	EC000211
ECLASS 8.0	27142421
Product description	SZ metal flange plate in two parts, for AX, with elastic clamping profile, WD: 339x149 mm, for flange plates size 2