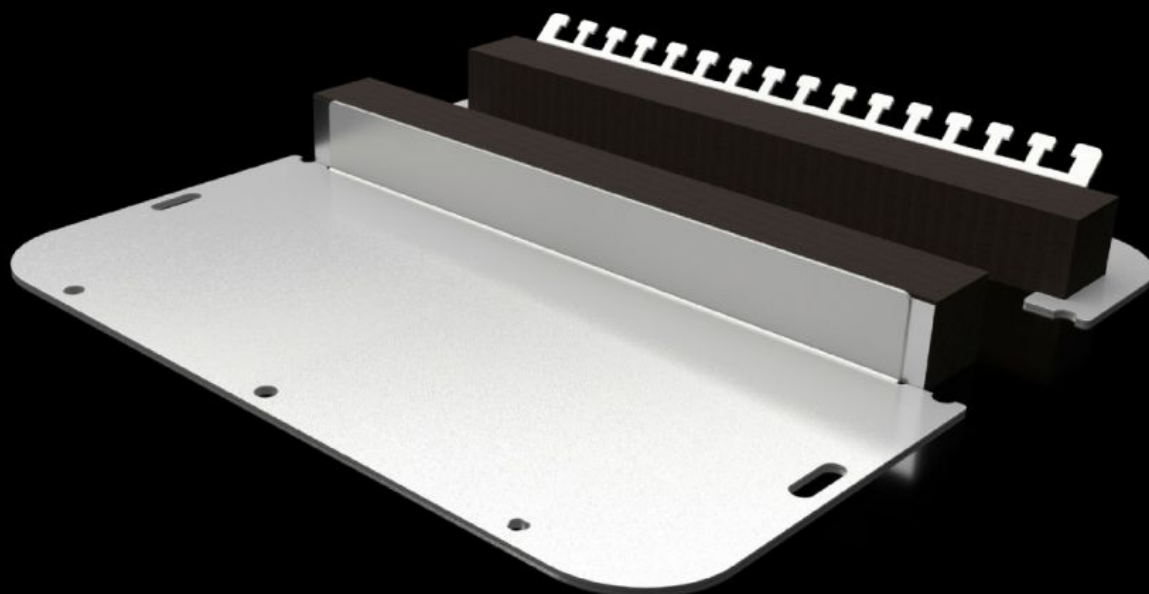
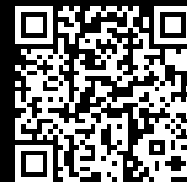


Rittal – The System.

Faster – better – everywhere.



SZ 2565.450

Flange plate in two parts with elastic clamping profile

State: 2/11/2026 (Source: [rittal.com/us-en](https://www.rittal.com/us-en))

ENCLOSURES

POWER DISTRIBUTION

CLIMATE CONTROL

IT INFRASTRUCTURE

SOFTWARE & SERVICES

FRIEDHELM LOH GROUP



SZ 2565.450 - Flange plate in two parts with elastic clamping profile for AX

The split flange plate allows easy mounting on the housing and offers various installation options. For easy insertion of cables with or without plug connections into the housing. The special holes in the flange plate ensure automatic equipotential bonding when screwed together. Bolts, clamps or grounding cables are no longer necessary.

Features

Model No.	SZ 2565.450
Version	Two-piece
Material	Carbon steel
Color	RAL 7035
Supply includes	Assembly components
Note	The assignment of the flange plate size can be found on the respective housings When installing in enclosure width >760 mm, 2 PUs are required
Dimensions	Width: 301 mm Depth: 221 mm Width: 11.9 " Depth: 8.7 "
Suitable for	Enclosure type: AX
Suitable for Model No.	1037.000 1055.000 1073.000 1180.000 1280.000 1338.000 1181.000 1281.000
Gland plate	Size: 5
Packaging unit	1 pc(s).

Features

Net weight	0.95
Gross weight	1.02
PCF/VE (cradle-to-gate)	3.9 kg CO2 eq (Cat B)
Information regarding the PCF class	Category B: PCF value (cradle-to-gate) calculated approximately on the basis of the product weight and self-declared
Customs tariff number	73079100
EAN	4028177973152
ETIM 9	EC000211
ETIM 8	EC000211
ECLASS 8.0	27142421