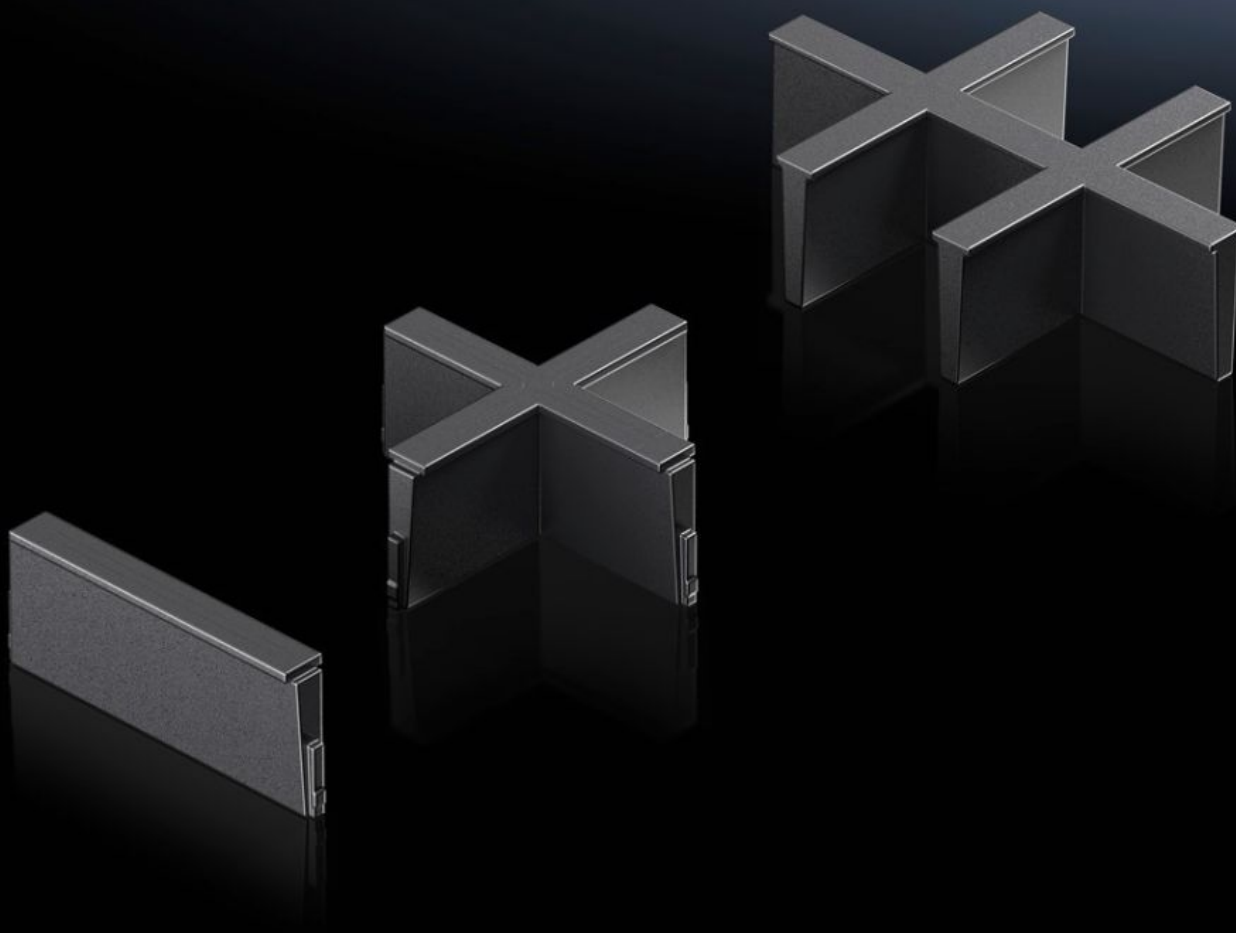


Rittal – The System.

Faster – better – everywhere.



AX 2582.600 Inlay

State: 5/16/2024 (Source: [rittal.com/us-en](https://www.rittal.com/us-en))

ENCLOSURES

POWER DISTRIBUTION

CLIMATE CONTROL

IT INFRASTRUCTURE

SOFTWARE & SERVICES

FRIEDHELM LOH GROUP



AX 2582.600 - Inlay for plastic gland plate, modular and sealing frame, modular

Individual inserts to subdivide the cut-outs in the modular plastic gland plate and the modular sealing frame.

Features

Model No.	AX 2582.600
Version	6 slots
Product description	Individual inserts to subdivide the cut-outs in the modular plastic gland plate and the modular sealing frame.
Material	Plastic
Color	Black
Packaging unit	5 pc(s).
Weight/packaging unit	0.5 kg 1.1 lb.
Customs tariff number	40091200
EAN	4028177939899
ETIM 7.0	EC000211
ECLASS 8.0	27142421

Approvals

Approvals	UR + C-UR (recognized)
-----------	------------------------