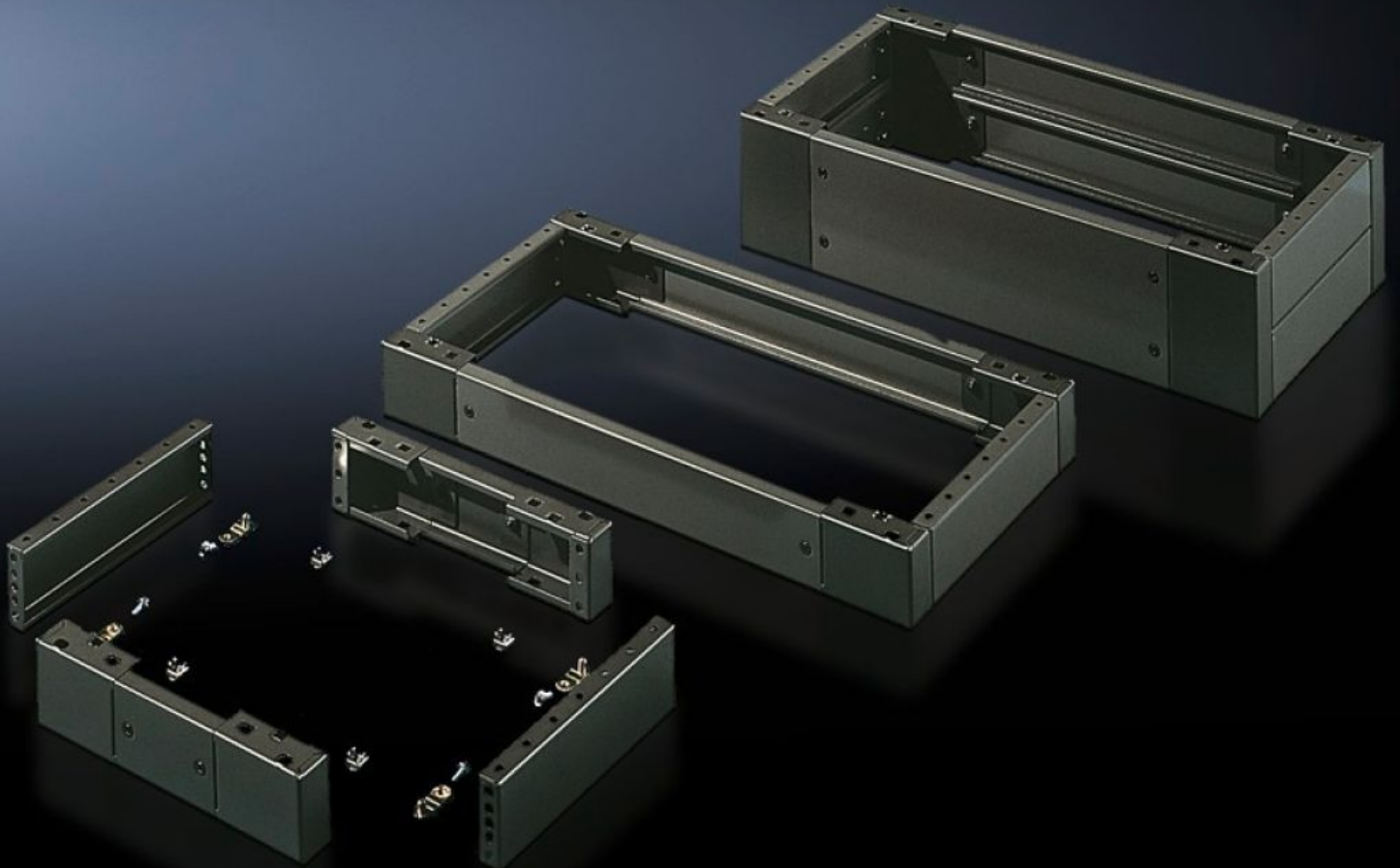


Rittal – The System.

Faster – better – everywhere.



SO 2801.200 Base/Plinth, Complete

State: 5/22/2026 (Source: rittal.com/us-en)

ENCLOSURES

POWER DISTRIBUTION

CLIMATE CONTROL

IT INFRASTRUCTURE

SOFTWARE & SERVICES

FRIEDHELM LOH GROUP



SO 2801.200 - Base/Plinth, Complete Carbon steel, for AE, TP universal consoles

Trim panels at the front and rear with fitted corner pieces and side trim panels.

Features

Model No.	SO 2801.200
Product description	Trim panels at the front and rear with fitted corner pieces and side trim panels.
Material	Carbon steel
Surface finish	Spray-finished
Color	RAL 7022
Supply includes	4 corner pieces 2 trim panels front/rear 2 trim panels, side Assembly components for mounting on the enclosure 2 trim panels front/rear 2 trim panels, side, each 100 mm
Dimensions	Height: 100 mm Depth: 279 mm Height: 3.94 " Depth: 11 "
Suitable for	Enclosure type: AE Width: = 1,000 mm Depth: = 300 mm Enclosure type: AE Width: = 39.4 " Depth: = 11.8 "
Packaging unit	1 pc(s).
Net weight	6.588 kg
Gross weight	6.935 kg
Customs tariff number	94039910

Features

ETIM 9	EC000721
ETIM 8	EC000721
ECLASS 8.0	27182003
Product description	AE Base/plinth, complete, for AE, for WD: 1000x300 mm, H: 100 mm, Sheet steel
