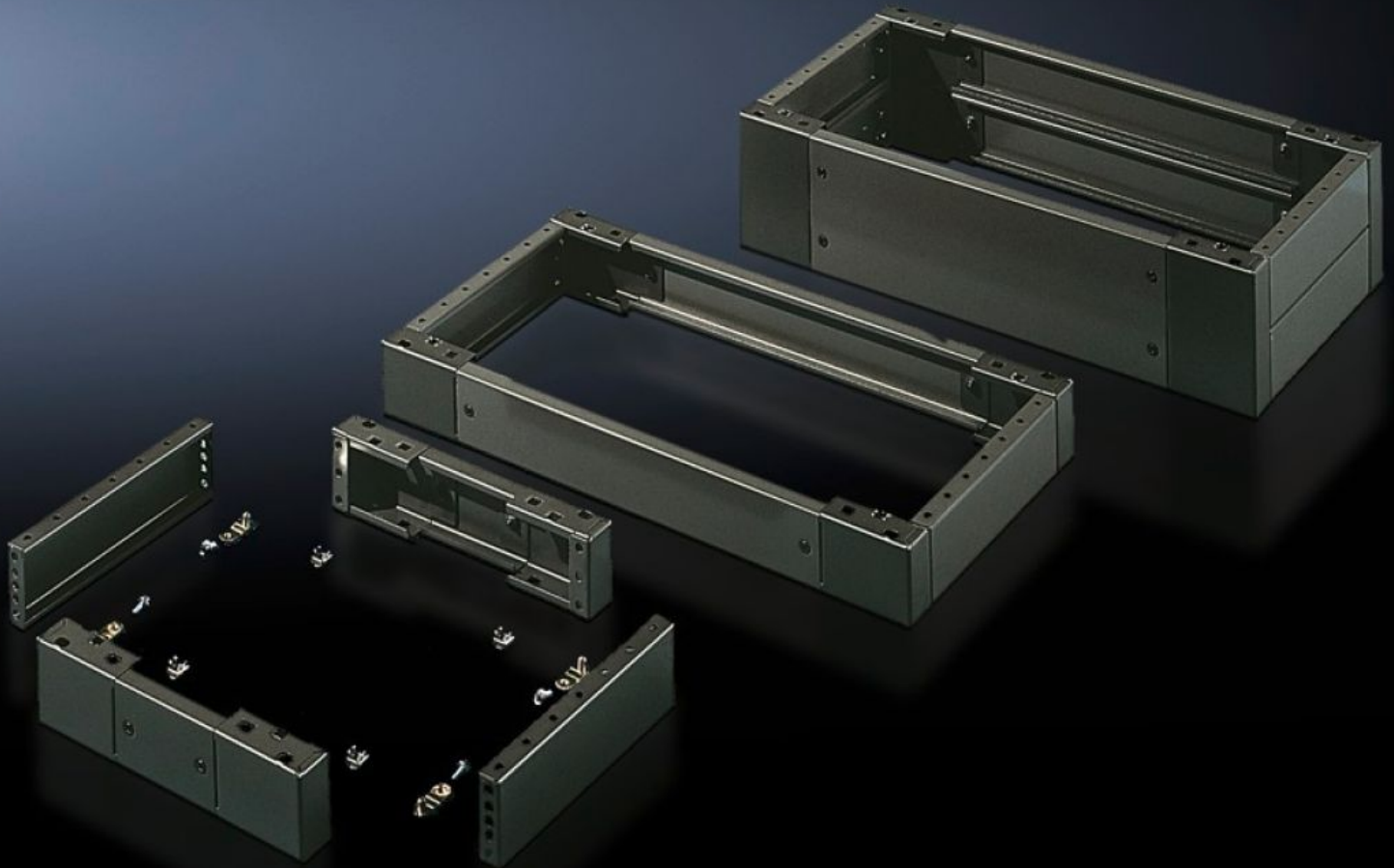


# Rittal – The System.

Faster – better – everywhere.



## SO 2816.200 Base/Plinth, Complete

State: 5/23/2026 (Source: [rittal.com/us-en](http://rittal.com/us-en))

ENCLOSURES

POWER DISTRIBUTION

CLIMATE CONTROL

IT INFRASTRUCTURE

SOFTWARE & SERVICES

FRIEDHELM LOH GROUP



# SO 2816.200 - Base/Plinth, Complete Carbon steel, for AE, TP universal consoles

Trim panels at the front and rear with fitted corner pieces and side trim panels.

## Features

|                       |   |
|-----------------------|---|
| Model No.             | SO 2816.200   |
| Product description   | Trim panels at the front and rear with fitted corner pieces and side trim panels.   |
| Material              | Carbon steel  |
| Surface finish        | Spray-finished  |
| Color                 | RAL 7022  |
| Supply includes       | 4 corner pieces<br>2 trim panels front/rear<br>2 trim panels, side<br>Assembly components for mounting on the enclosure<br>2 trim panels front/rear<br>2 trim panels, side, each 100 mm |
| Dimensions            | Height: 100 mm<br>Depth: 279 mm<br>Height: 3.94 "<br>Depth: 11 "  |
| Suitable for          | Enclosure type: AE<br>Width: = 600 mm<br>Depth: = 300 mm<br>Enclosure type: AE<br>Width: = 23.6 "<br>Depth: = 11.8 "  |
| Packaging unit        | 1 pc(s).  |
| Net weight            | 5.1 kg  |
| Gross weight          | 5.321 kg  |
| Customs tariff number | 94039910  |

# Features

---

|                     |   |
|---------------------|---|
| ETIM 9              | EC000721  |
| ETIM 8              | EC000721  |
| ECLASS 8.0          | 27182003  |
| Product description | AE Base/plinth, complete, for AE, for WD: 600x300 mm, H: 100 mm,<br>Sheet steel |