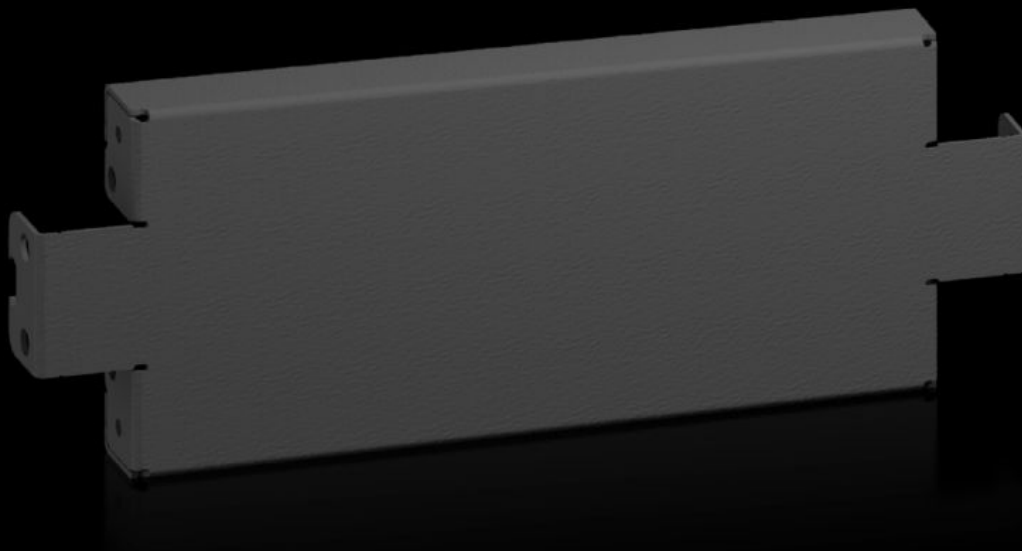


**Rittal – The System.**

Faster – better – everywhere.



**AX 2820.410**

**Base/plinth trim panels, side, 100 mm**

State: 4/2/2026 (Source: [rittal.com/us-en](http://rittal.com/us-en))

ENCLOSURES

POWER DISTRIBUTION

CLIMATE CONTROL

IT INFRASTRUCTURE

SOFTWARE & SERVICES

FRIEDHELM LOH GROUP



# AX 2820.410 - Base/plinth trim panels, side, 100 mm for AX

For side completion of a base/plinth unit and for additional stabilization or the interior installation of baying bases. One 200 mm high or two 100 mm high trim panels can optionally be used to 200 mm high base/plinths.

## Features

Model No.	AX 2820.410
Product description	For side completion of a base/plinth unit and for additional stabilization or the interior installation of baying bases. One 200 mm high or two 100 mm high trim panels can optionally be used to 200 mm high base/plinths.
Material	Carbon steel
Color	RAL 9005
Supply includes	Assembly components
Note	The components of the first generation base/plinth system cannot be combined with the components of the second generation base/plinth system
Dimensions	Height: 100 mm Height: 3.94 "
Suitable for	Enclosure type: AX Depth: = 400 mm Enclosure type: AX Depth: = 15.7 "
Type rating according to UL 50E	Type 1 Type 3R Type 4 Type 12
Packaging unit	2 pc(s).
Net weight	1.04 kg
Gross weight	1.054 kg

# Features

---

Customs tariff number	94039910
ETIM 9	EC000721
ETIM 8	EC000721
ECLASS 8.0	27182003
Product description	AX Base/plinth trim panels, sides, H: 100 mm, for D: 400 mm

---

# Approvals

---

Approvals	UL + C-UL - FTTA
-----------	------------------