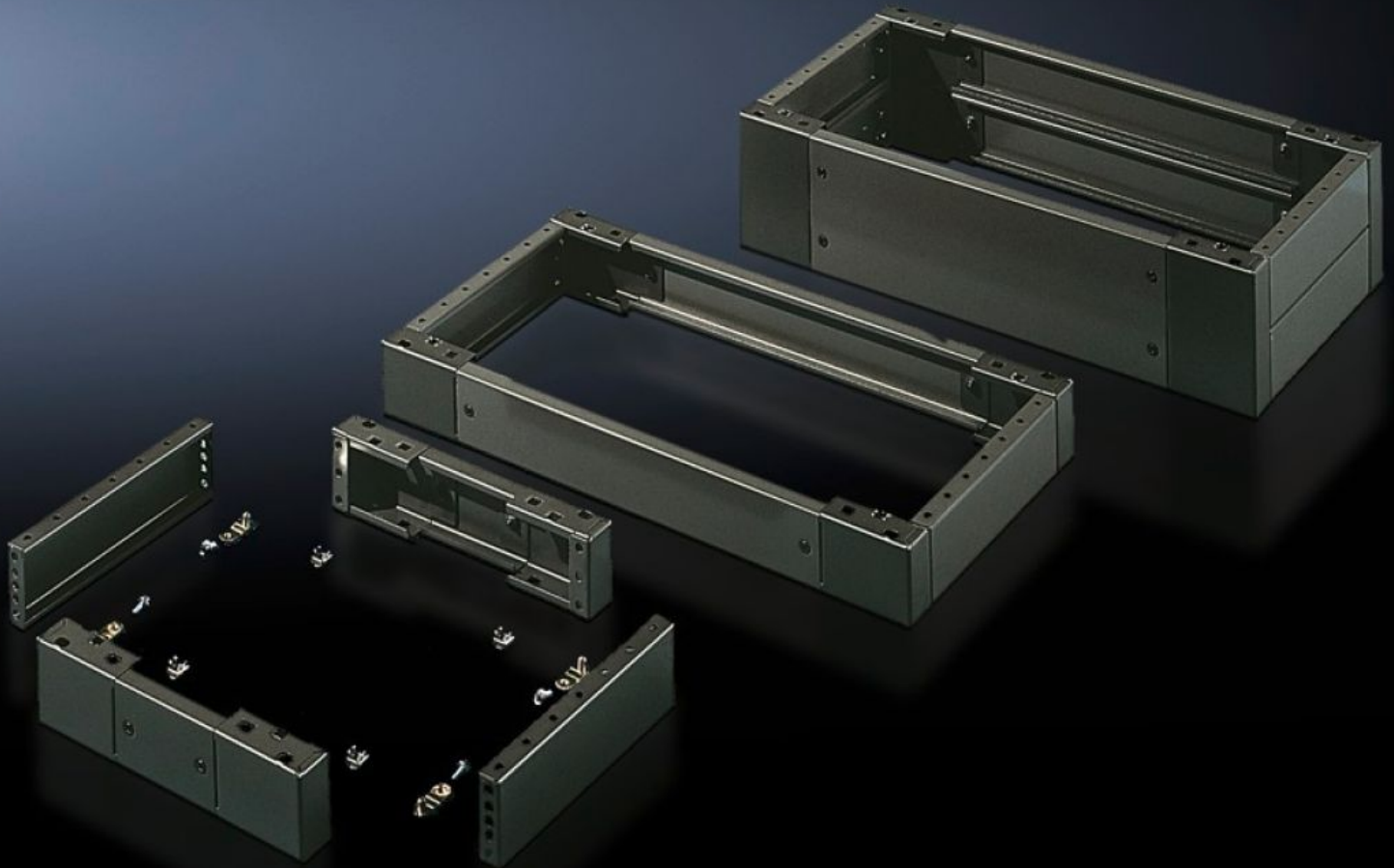


**Rittal – The System.**

Faster – better – everywhere.



# SO 2826.200 Base/Plinth, Complete

State: 7/2/2026 (Source: [rittal.com/us-en](http://rittal.com/us-en))

ENCLOSURES

POWER DISTRIBUTION

CLIMATE CONTROL

IT INFRASTRUCTURE

SOFTWARE & SERVICES

FRIEDHELM LOH GROUP



# SO 2826.200 - Base/Plinth, Complete Carbon steel, for AE, TP universal consoles

Trim panels at the front and rear with fitted corner pieces and side trim panels.

## Features

Model No.	SO 2826.200
Product description	Trim panels at the front and rear with fitted corner pieces and side trim panels.
Material	Carbon steel
Surface finish	Spray-finished
Color	RAL 7022
Supply includes	4 corner pieces 2 trim panels front/rear 2 trim panels, side Assembly components for mounting on the enclosure 1 trim panel front/rear of 200 mm 2 trim panels, front/rear, each 100 mm 4 trim panels, side, each 100 mm
Dimensions	Height: 200 mm Depth: 279 mm Height: 7.87 " Depth: 11 "
Suitable for	Enclosure type: AE Width: = 600 mm Depth: = 300 mm Enclosure type: AE Width: = 23.6 " Depth: = 11.8 "
Packaging unit	1 pc(s).
Net weight	8.811 kg
Gross weight	9.275 kg

# Features

---

Customs tariff number	94039910
ETIM 9	EC000721
ETIM 8	EC000721
ECLASS 8.0	27182003
Product description	AE Base/plinth, complete, for AE, for WD: 600x300 mm, H: 200 mm, Sheet steel

---