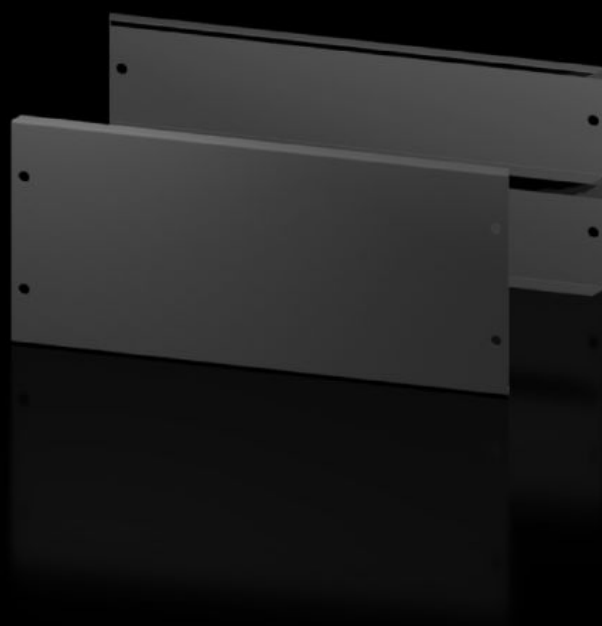
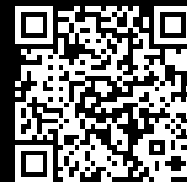


Rittal – The System.

Faster – better – everywhere.



AX 2830.062

Base/plinth panels, front and rear

State: 1/2/2026 (Source: [rittal.com/us-en](https://www.rittal.com/us-en))

ENCLOSURES

POWER DISTRIBUTION

CLIMATE CONTROL

IT INFRASTRUCTURE

SOFTWARE & SERVICES

FRIEDHELM LOH GROUP



AX 2830.062 - Base/plinth panels, front and rear for AX

The base/plinth panels at the front and rear offer a large opening for optimal access to the screw-fastening point and simple cable routing.



Features

Model No.	AX 2830.062
Version	new version/design
Material	Base/plinth trim panels, front/rear: Carbon steel
Color	RAL 9005
Supply includes	2 x base/plinth trim panels, front/rear
Note	Base/plinth elements are required on the sides to finish off a base/plinth unit The components of the first generation base/plinth system cannot be combined with the components of the second generation base/plinth system
Dimensions	Height: 200 mm Height: 7.87 "
Suitable for	Enclosure type: AX Width: = 600 mm Enclosure type: AX Width: = 23.6 "
Packaging unit	2 pc(s).
Net weight	2.5
Gross weight	2.591
Customs tariff number	94039910

Features

EAN	4028177037434
ETIM 9	EC000721
ETIM 8	EC000721
ECLASS 8.0	27182003

Approvals

Approvals	UL + C-UL - FTTA
-----------	------------------